



# Salisbury Water

## Recycled Water Guidelines for Installation and Use



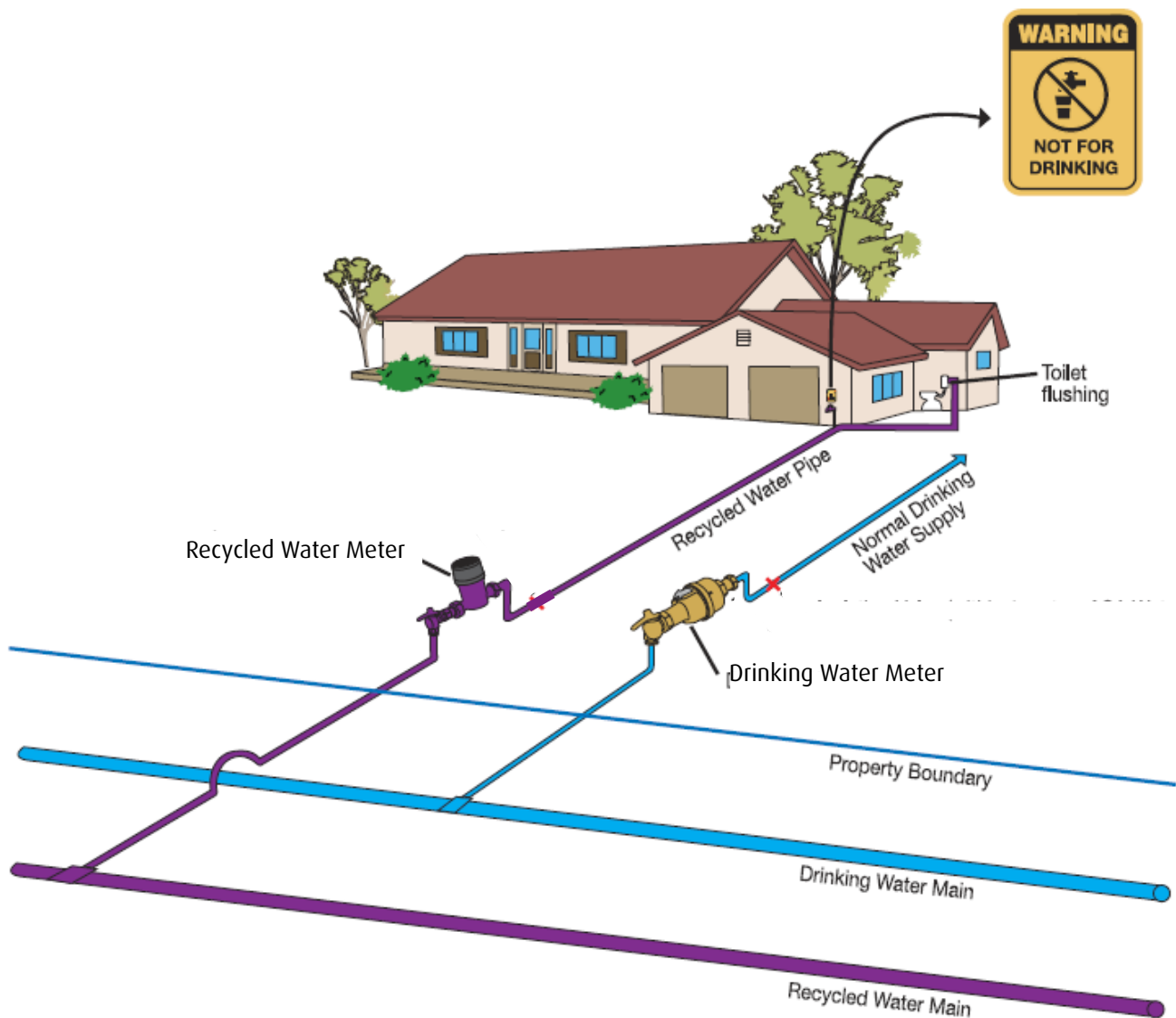
# Salisbury Water, services

Salisbury water is recycled water as defined in this document. Salisbury Water is NOT drinking (potable) water. This guideline is for those who install Salisbury Water Services within the City of Salisbury. It aims to ensure proper installation of the Salisbury Water Service and provide a clear guide for safe use of Salisbury Water.

This guide is also for householders to help them understand how the Salisbury Water system works and how Salisbury Water may be used in the home.

The Salisbury Water guideline is, where possible, compatible with the Recycled Water Plumbing Guide, but provides more specific details for the City of Salisbury.

Copies of the Salisbury Water guide can be downloaded from the City of Salisbury website. Please visit [www.salisbury.sa.gov.au](http://www.salisbury.sa.gov.au) for more information.



# Salisbury Water, Information

Salisbury Water is the term the City of Salisbury uses for its recycled water. Salisbury Water is primarily recycled stormwater and native groundwater.

It is treated to a standard defined by the National Stormwater Guidelines.

Salisbury Water must be managed differently to drinking (potable) water. The use of Salisbury Water is growing rapidly throughout the City of Salisbury as we explore ways to become more water efficient.

For properties supplied with Salisbury Water a dual water supply will be available, consisting of:

- One water main for drinking water
- One water main for Salisbury Water

The Salisbury Water system does have very distinctive features which make it easy to identify. This guide outlines those distinctive features to ensure Salisbury Water services are installed properly.

The main objective is to ensure the Salisbury Water service cannot be interconnected to the drinking water supply within the property.

On completion of the work the plumber will be required to notify SA Water and the City of Salisbury. An audit will be undertaken before commissioning the Salisbury Water service to:

- Ensure there is no interconnection between the Salisbury Water service and the drinking water service, and;
- Ensure Salisbury Water is only supplied to garden taps and/or toilets.

This guide will tell you how to do this.

The plumber is required to submit a Certificate of Compliance to the property owner, the City of Salisbury (and their contracted licensed plumbing contractor) and the Office of the Technical Regulator (OTR) within seven days of completing the final fix commissioning.

Note: Notification to SA Water is not required if the Salisbury Water connection is for an irrigation system only.





# Salisbury Water, what can it be used for?

Salisbury Water can be used for the following:

- Toilet flushing
- Washing cars
- Garden Irrigation
- Filling ornamental ponds

Salisbury Water cannot be used for the following:

- Drinking (human and animal consumption)
- Cooking or other kitchen purposes
- Personal washing e.g. baths, showers, hand basins and bidets
- Evaporative coolers
- Clothes washing
- Indoor household cleaning
- Swimming pools and spas
- Recreation activities involving water contact e.g. children playing under sprinklers
- Washing of pets



# Salisbury Water, Pipe mains

Salisbury Water will be delivered to properties by a system of dedicated mains. Upon application to the City of Salisbury by the plumber/builder/owner, each property will be provided a Salisbury Water connection from the Salisbury Water main (a separate application must be made to SA Water for a drinking water supply connection from the drinking water main).

## **Water Pressure**

Water pressure in the Salisbury Water main will be slightly less than the pressure in the drinking water main. This will impact on the pressure of water for irrigation systems connected to the Salisbury Water system and therefore needs to be considered when designing the irrigation system.

## **From Main to Meter**

Two water service pipes will enter the property:

- The service pipe for Salisbury Water will be identified by a purple colour in accordance with AS2700, being no darker than P24 Jacaranda or P12 Purple and no lighter than P23 Lilac.
- The service pipe for drinking water supply will not be coloured lilac/purple.



# Salisbury Water, Meter Assemblies

The Salisbury Water meter assembly is purple in colour. The meter will be fitted above ground in the position of the existing 'prelaid' water service point on the property, usually to the left of the SA Water meter.

- The Salisbury Water meter will be locked in the closed position until the Salisbury Water service has been completed, inspected by SA Water, the City of Salisbury and deemed suitable for activation.
- The meter components used for Salisbury Water are different to those for drinking water, this is to prevent interchange of the meters.
- The licensed plumbing contractor must ensure SA Water and the City of Salisbury have been notified before commencing work and at each stage of the Salisbury Water service installation. The plumbing contractor is required to be present at the time of the final fix commissioning by the City of Salisbury.
- A dual check valve will be provided by SA Water as part of the 20mm drinking water meter assembly, the dual check valve is to remain visible and accessible and must be in place before final fix commissioning of the Salisbury Water service.
- Metered drinking water supplies greater than 20mm will require an approved backflow prevention service installed by the plumbing contractor.
- Alteration to the existing Salisbury Water connection will require an application to be made to Council.

## Salisbury Water, Approved products

Only products certified under the National Plumbing Product Approval Scheme are permitted to be used for Salisbury Water services connected to the Salisbury Water supply systems.

Pipes to be used on Salisbury Water must be clearly and permanently identified with 'Recycled Water - DO NOT DRINK' and coloured in accordance with AS2700, being no darker than P24 Jacaranda or P12 Purple and no lighter than P23 Lilac. External metallic stand pipes must be coloured as above.





# Salisbury Water, On the property

The plumber is required to submit a Certificate of compliance to the Property Owner, the City of Salisbury (and their licensed plumbing contractor) and the Office of the Technical Regulator (OTR) within seven days of completing the work

Under no circumstances is there to be interconnection between the Salisbury Water service and the drinking water service.

- All plumbing work within a property, including Salisbury Water plumbing, is to be undertaken by a licensed or registered plumber.
- All pipe work and products used in the installation of Salisbury Water services shall comply with Section 2 of AS/NZS 3500.1.2003
- Where pipes are not integrally coloured purple, identification may be achieved by means of close fitting durable purple coloured sleeving, netting or spirally wrapped tape.
- All Salisbury Water pipes, pipe sleeves and identification tapes and outlets shall be purple and marked with the following: RECYCLED OR RECLAIMED WATER \_ DO NOT DRINK.
- All buried pipes must have identification tape installed on top of the Salisbury Water pipe, running longitudinally and fastened to the pipe at not more than 3 meter intervals. This identification tape is designed to ensure safety when digging in the vicinity of recycled water pipes to prevent rupture.
- External hose tap outlets shall comply with the following:
  - (a) They shall be clearly marked with either a warning sign or prohibition sign in accordance with AS1319.
  - (b) They shall be of a type that has a removable handle except where the outlet is installed 1200mm or more above finished surface level.
  - (c) They shall be coloured, powdered coated purple.
  - (d) They shall have right hand thread outlets (left hand threaded outlets will be not be accepted by the City of Salisbury).
- All other installation requirements of Section 5 AS/NZS3500.1 Installation of Cold Water Services also apply.

## Salisbury Water, commissioning the system

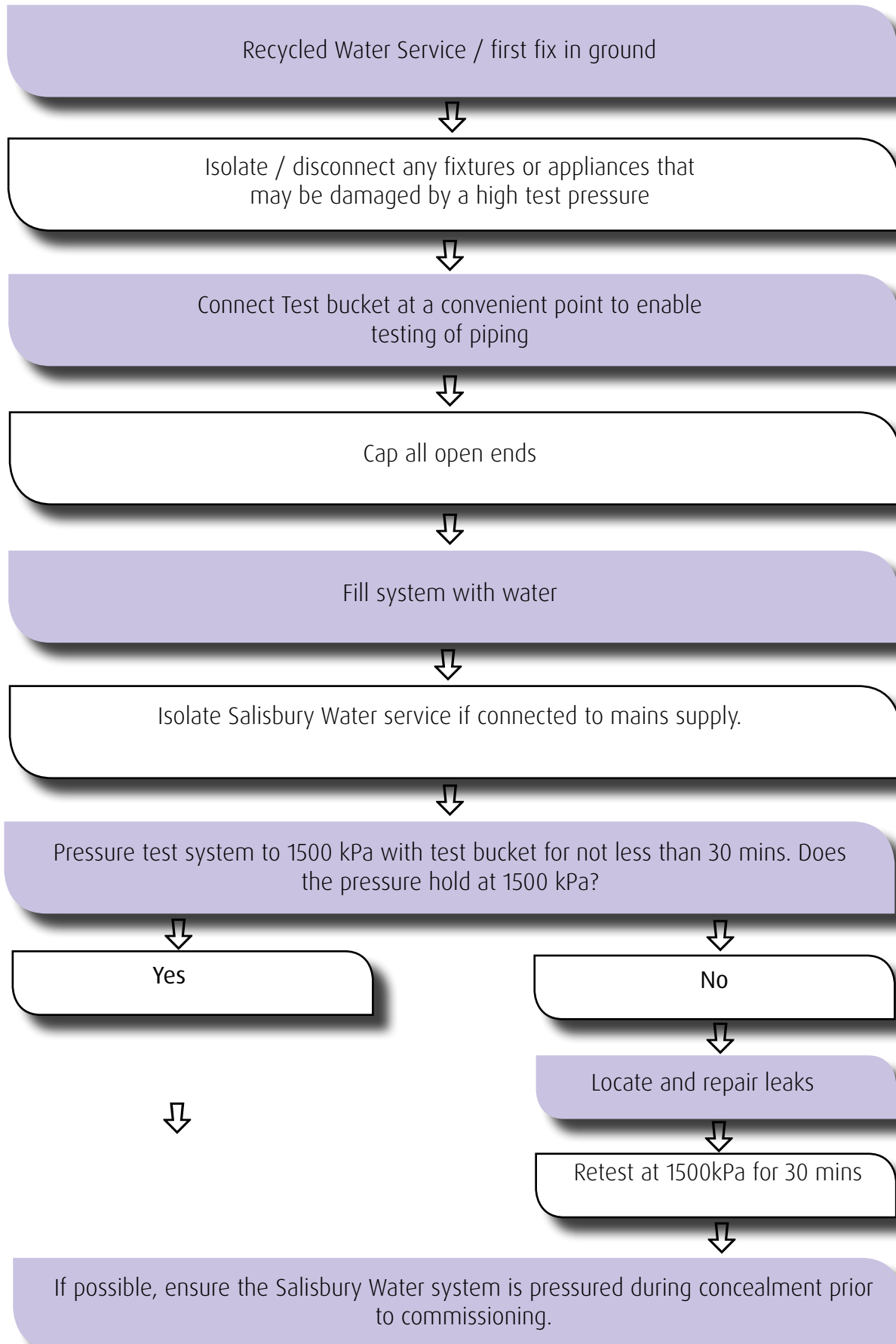
It is the responsibility of the installing plumber to contact the City of Salisbury and the Office of the Technical Regulator at each stage of the commissioning of the installation before handover and use by the property owner. The pipework must be visible at each stage for inspection. On the successful completion of the commissioning process, Council will attach a Salisbury Water label to the inner side of the electricity meter box door.

The following commissioning procedures must be followed and detailed on the Certificate of Compliance as completed. The plumbing contractor is to be present at the time of the final fix commissioning by the City of Salisbury.

# Stage 1

## Commissioning of the Salisbury Water System

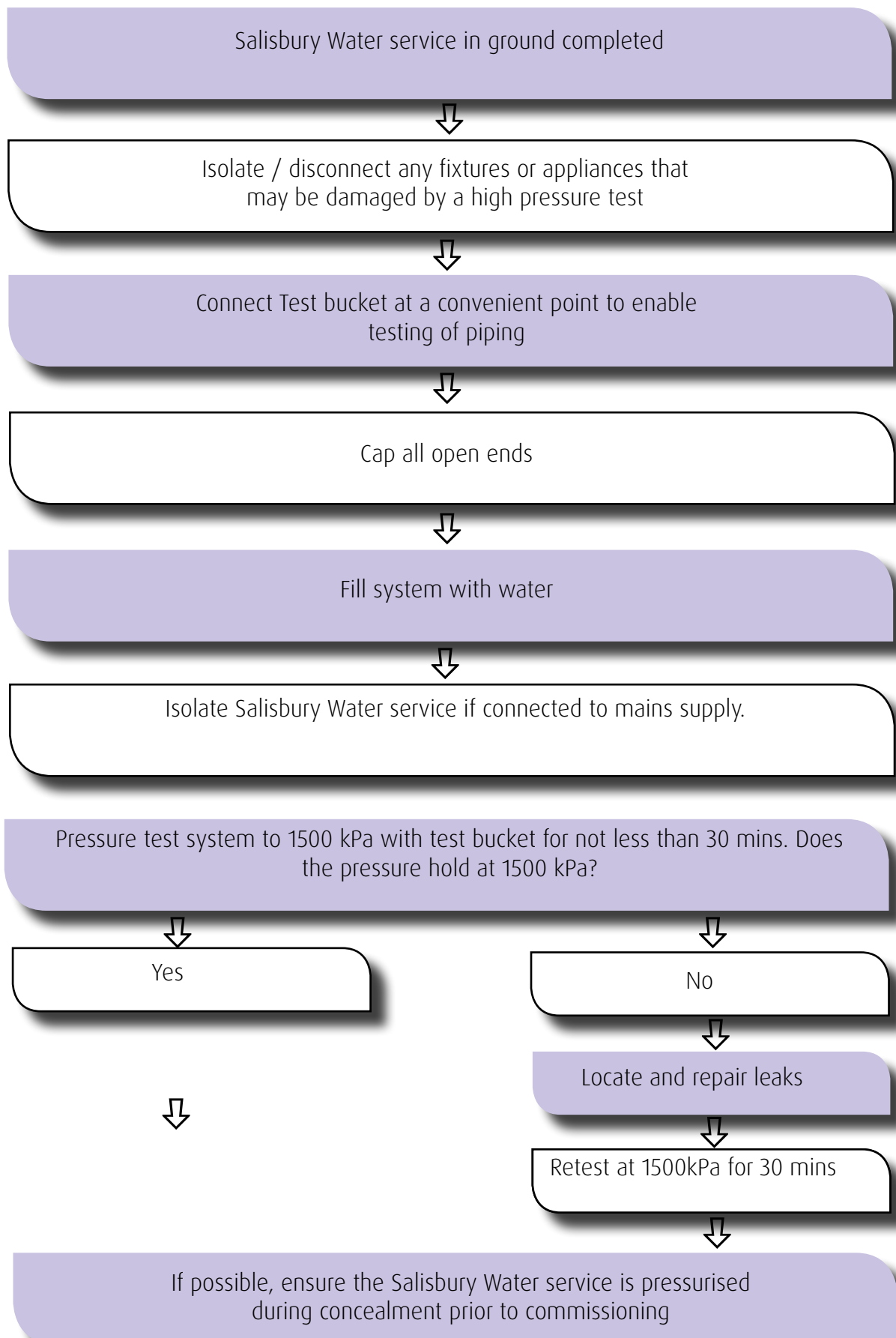
### First Fix Inground





## Stage 2

### Commissioning of the Salisbury Water System First Fix in Wall



## Stage 3

### Commissioning of the Salisbury Water System

#### Final Fix

Turn off the drinking water supply to the property at the drinking water meter.  
Turn on the Salisbury Water supply and leave it on.



Turn on all sink, laundry trough, washing machine, bath, shower and hand basin taps one by one. All taps should run dry after a short period of time.



After all taps have run dry flush all toilets. Toilets should refill as normal if connected to Salisbury Water supply.



Turn on all outside taps. External drinking water taps, if any, should run dry. Taps that continue to run are connected to Salisbury Water and should be clearly identified via appropriate warning signs.



To check internal appliances such as washing machines and dishwashers, turn off the Salisbury Water service and turn the drinking water supply back on. Run the Salisbury Water service dry via an external tap.



Turn on internal/external appliances. If the appliances do not run they have been incorrectly connected to the Salisbury Water service.



Turn Salisbury Water service back on at the meter. Slowly turn on the tap connected to the Salisbury Water service located furthest away from the meter to allow air to be purged from the pipeline while line is recharging.

# Salisbury Water, the sustainable choice

## For more information

For further information contact the City of Salisbury or contact the following organisations:

### City of Salisbury

34 Church Street

Salisbury SA 5108

[www.salisbury.sa.gov.au](http://www.salisbury.sa.gov.au)

[city@salisbury.sa.gov.au](mailto:city@salisbury.sa.gov.au)

T: 08 8406 8222

### Office of the Technical Regulator

[www.sa.gov.au](http://www.sa.gov.au)

T: 08 8226 5500

### Essential Services Commission of South Australia

T: 1800 633 592

### Department of Health

[www.health.sa.gov.au](http://www.health.sa.gov.au)

T: 08 8226 6000

### Environmental Protection Authority

[www.epa.sa.gov.au](http://www.epa.sa.gov.au)

T: 08 8204 2004

### Department of Environment & Water

[www.environment.sa.gov.au](http://www.environment.sa.gov.au)

T: 08 8204 1910

### Master Plumbers

[www.mpasa.com.au](http://www.mpasa.com.au)

T: 08 8292 4000

### Energy and Water Ombudsman

T: 1800 665 165

### SA Water

[www.sawater.com.au](http://www.sawater.com.au)

T: 1300 650 950

