



NATIVE GRASSES: ENHANCING ESTABLISHMENT FORUM 2016



OCTOBER 20 - 21 2016
TECHNOLOGY PARK, MAWSON LAKES,
SOUTH AUSTRALIA



Government of
South Australia



Natural Resources
Adelaide and Mt Lofty Ranges

CONTENTS

Event Overview	2
Key Note Presenter	3
Speakers	3
Day One	6
Day Two	7

EVENT OVERVIEW

October 20 and 21, 2016

Technology Park, Mawson Lakes, South Australia

The NATIVE GRASSES: ENHANCING ESTABLISHMENT FORUM is hosted by the City of Salisbury with support from the Native Grass Resources Group and will be attended by expert biodiversity officers, grassland practitioners, landowners, researchers and ecologists from around Australia, whose aim is to establish, restore and manage grasslands.

The two day forum will bring together over 100 leading professionals to discuss latest practice and share knowledge as well the successes and failures individuals have experienced. It will include presentations by leading practitioners on the need to both conserve existing grasslands and create opportunities and techniques to establish and restore native grasslands, panel discussions, a half-day field trip and plenty of opportunities for networking and information sharing with industry peers.

All profits from the forum will be allocated towards Landcare Restoration (on-ground works, monitoring and training) within the Northern Adelaide Plains and Foothills.

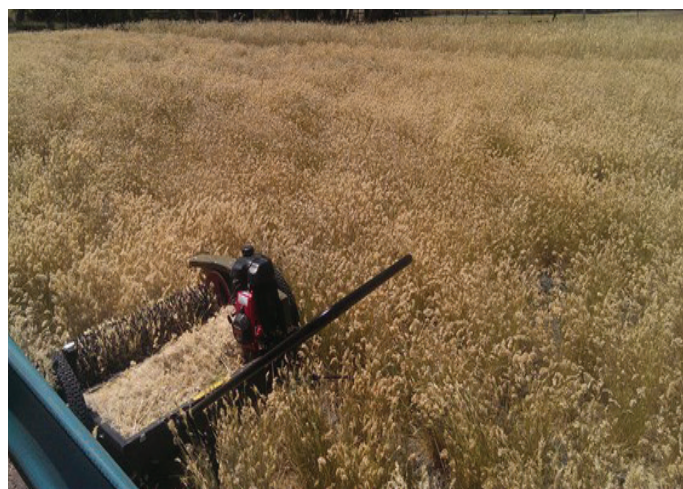
Proudly supported by Native Grass Resources Group and Adelaide and Mount Lofty Ranges Natural Resources Management Board.

TICKETS

For ticket prices and to register for the event please go to the link below;

<https://www.eventbrite.com.au/e/native-grasses-enhancing-establishment-forum-2016-tickets-26870594672>

For more information regarding the event please contact Tamika Cook, Landscape Systems Officer on 8406 8578



PRESENTERS

Key Note Speaker

Photo Credit: Adrian Marshall



Mr Chris Findlay
Director, Flora Victoria

Chris Findlay is a managing director of Flora Victoria, a company involved in Environmental Contracting on the basalt plains to the west of Melbourne and Native Grass Seed Production for

grassland revegetation.

After obtaining an Associate Diploma in Horticulture on 1990, Chris worked in the native and indigenous gardens at Burnley College. In 1998 he started Flora Victoria to create grassland gardens for Brimbank City Council. He has also worked as a trainer and assessor for Horticulture and Conservation and Land Management subjects at the Goulburn Ovens TAFE, and was "Head of Revegetation Operations" at Native Seeds.

Flora Victoria has become a leader in grassland management and creation by delivering high quality weed control in remnant grasslands, and supplying commercial quantities of certified native grass seed. Flora Victoria has developed techniques for the successful large scale establishment of native grass for seed production, revegetation and civil landscapes.

SPEAKERS

Wayne Brown Consultant

Wayne Brown was South Australia's first Revegetation Officer appointed in 1990 to Department of Agriculture (PIRSA) and now has over 26 years experience delivering complex environmental projects in both the urban and rural environs.

He is a founding member of the Native Grass Resources Group. He is one of South Australia's most respected large-scale landscape restoration specialists, environmental innovators and sustainable agricultural leaders.

In 2011 Wayne established his Environmental and Sustainable Agricultural Consulting business called Environments by Design developing a Plant Based Solutions approach, consulting around Australia.



Bruce Pascoe
Author

Bruce was born in Victoria and graduated from Melbourne University with a Bachelor of Education. He has a Bunurong and Tasmanian heritage. He has worked as a teacher, farmer, fisherman, barman, farm fence contractor, lecturer, Aboriginal language researcher, archeological site worker and book editor. He has written 27 books including a loosely linked series of 5 novels and won the Fellowship of Australian Writers' Literature Award in 1999. His novel, Fog, won the Prime Minister's award in 2013. His stories have won 10 national competitions and been published in 6 languages and 9 countries.

Over the last few years much of Bruce's work has involved research into indigenous history, indigenous language revival and being Secretary of the local Aboriginal Corporation.

John Stafford

As Land Management Officer with the East Torrens Council John became involved with native grasses in 1977 when with Dr. Tim Fatchen a proactive weed control program was developed to replace invasive species in Cleland Conservation Park with Themeda triandra.

This first attempt to establish native grass was successful and thereafter the hand harvesting and sowing of Themeda culms became an annual activity within a successful program of revegetating numerous reserves in the Hills Face adjacent Adelaide.

In 1987 the purchase of a Fendt Tool Carrier initiated the development of mechanical harvesting, cleaning, and sowing seed of a broad range of native grass species. However, quite often this new sophistication resulted in various levels of failure in crop establishment.

Reflection upon the failure that so often attends our dependence upon the sowing of native grass seed has long been a mental torment and will be the focus of his talk.

Alice Quarmby
Swainsona Environmental Services

Alice Quarmby has 15 years experience as a native seed collector and over 10 years experience as a seed biologist. She was trained by the South Australian Seed Conservation Centre (Adelaide Botanic Gardens) and also Kew Botanic Gardens (UK) as part of the international Millennium Seed Bank Project. Alice managed the Northern Territory partnership with the Millennium Seed Bank Project (MSBP) from 2007-2011 and then managed Western Botanicals' Seedlab (Western Australia) from 2011-2014. In 2015 Alice moved back to South Australia and started Swainsona Environmental Services, providing seed quality testing, seed biology research and seed collection services to the private and public sector.



Tim Zwiersen
Managing Director,
Ecotypic, Pty Ltd

Tim is the Managing director of Ecotypic Pty Ltd, a business supplying native seed, revegetation & weed management services, and Seed

Production Area design & construction for the mining, civil & government sectors.

On completing an Applied Science Degree, Tim Zwiersen moved to Western Australia from South Australia. Employed initially by Kimseed P/L, then Rally Revegetation & Environmental services out of Kalgoorlie, Tim started his own business in 1999, and has been employed as a mine rehabilitation and revegetation practitioner since, providing native seed and revegetation services to projects in WA, SA, and NSW.

Tim first joined the native grass 'movement' in 2003, with the desire to introduce native grasses as a mid row management tool in his Family's vineyard holding in the Clare valley.

Tim has helped pioneer native Seed Production Areas, mechanical broadcast direct seeding technology and the management of Native Grasslands and Grassy woodlands.

Jason Stevens
Kings Park Botanic Gardens

Jason is currently the leader of the restoration ecology theme at the Science Directorate of Kings Park and Botanic Garden. Many of the challenges he has worked through over the past decade are based on overcoming barriers to plant establishment (both seed and seedling) in degraded landscapes, mainly post-mining but also post-agricultural soils. This presentation will provide a holistic approach Kings Park Science uses to understand limitations to native grass establishment but also some of the solutions developed to improve efficiencies around native seed and seedling use.

Jodie Reseigh
PIRSA Rural Solutions SA

Jodie is a Senior Environmental Consultant with PIRSA Rural Solutions SA, and a farmer from Kyancutta. She has a PhD in Environmental Management from the University of New England and has used that knowledge base to great effect on her return to South Australia. Key projects that she has been involved in include the Native Grass Strategy for South Australia, the Nutritional Composition of Native Grasses and the Impacts of Rotational Grazing Native Grasses on Soil Carbon.

Shaun Kennedy
Vegetation Specialist, SA Water

Shaun completed a Science degree at the University of Adelaide majoring in Botany and Zoology and graduated with Honours in 1999 and also has a Diploma in Project Management.

Shaun began work at SA Water in 2000 undertaking Environmental Impact Assessment for infrastructure upgrades before specialising in revegetation and wetland construction. Over the past ten years Shaun has designed and managed several large scale native revegetation and wetland projects in the Adelaide hills catchments covering over 1050 hectares.

Andrew Fairney
Grassy Woodland Restoration Project Officer, Upper
Torrens Land Management

After years working in the landscaping industry, Andrew decided to follow his lifelong passion for the natural environment and completed a Bachelor of Environmental Science through the University of South Australia. Following his study, and a caravanning trip around Australia with his family, Andrew took on the role of Project Officer for the South Australian Grassy Groundcover Restoration Project.

Four years into the project, Andrew was highly commended at the 2015 State Landcare Conference for his work as a Landcare Facilitator. He has also presented at multiple native grass events including 'Marginal to Mainstream Native Grasses' forum, 'Horses and Native Grass Pastures' workshops and the biannual 'Native Grass Researchers' workshop hosted by Dr Ian Chivers of Native Seeds Pty Ltd in Victoria.

Andrew has been working closely with Bob Myers, native grasses guru and mentor, on innovative methods and seeding techniques. Together, they are designing machinery to sow native grassland multi species mixes into our often shallow and depleted soils. His presentation will draw on lessons learned in the quest to enhance the establishment of native grasses.



Monique Smith
PhD Candidate,
University of Adelaide

Monique is in her third year of her PhD under the supervision of Associate Professor José M. Facelli and Associate Professor Tim Cavagnaro

from the University of Adelaide and Leanne Rosser from the Department of Environment, Water and Resources. Her project looks at ways to overcome barriers to restoring previously cultivated landscapes (old-fields) and ways of altering soil conditions, such as increased nutrients due to fertilization, to favour native grasses over invasives.

It is known that weed invasions and previous land use can alter soil microbial communities so one key component of her PhD focuses on how these changes may inhibit restoration of old-fields. Her research has focussed on finding the differences in microbial communities between old-field and remnant soils, the effects these differences may have on growth of native and weed grass species, and the implications for improving old-field restoration success.

Monique's PhD also includes a trial of different planting strategies, in terms of planting density and diversity, which aims to improve the resilience of revegetated grass communities to weed invasion. This is an example of how her project uses strong ecological theory, in this case niche theory and community ecological theory, to produce practical outcomes for more successful restoration.



Dr Ash Martin
Managing Director,
Microbiology
Laboratories Australia

Dr Ash Martin is the Managing Director of Microbiology Laboratories Australia

(Microbe Labs), a world leader in commercial microbiology analysis of soil, fertilisers and compost for agriculture, forestry and the environment.

Ash's broad range of experiences gives him a unique ability to apply science to practical problems. From working in orchards as a boy until completing a PhD in applied soil microbiology (Adelaide), Ash has worked as an experimental scientist (CSIRO), postdoctoral researcher (Monash), technical officer (NSW Agriculture & CSR) agronomist, farmer and nurseryman. Ash enjoys helping to make soil management more sustainable by providing tests and expertise to help manage soil microbiology.

DAY ONE

Thursday 20 October 2016

9.00am	REGISTRATION (Tea and Coffee)
9.20am	Welcome to Country Jack Buckskin Tauondi College
9.30am	Welcome to the City of Salisbury Craig Johansen City of Salisbury
9.40am	Setting the Scene Chris Penfold Native Grass Resources Group
9.50am	Agriculture or Accident? Bruce Pascoe Author
10.20am	Do we need to resow or can we leave it to nature? Wayne Brown
10.50am	MORNING TEA AND NETWORKING
11.20am	Tales of wine, wisdom and woe John Stafford
11.50am	Key Note Speaker - Creating Sustainable Native Grass Landscapes Using Direct Seeding Chris Findlay Managing Director, Flora Victoria
12.30pm	Speaker Panel - Question session
1pm	LUNCH AND NETWORKING
1.45pm	Seeds of Success: getting to know your seeds Alice Quarmby
2.15pm	Past, present and future: perspectives on broad-scale restoration of native vegetation, with a grass flavour Tim Zwiersen
2.45pm	Developing agronomic packages for native grasses Dr Geoffrey Woodall
3.15pm	Deciphering the bottlenecks in native grass establishment Jason Stevens



3.45pm	Experiences with Native Grasses in the Upper North Jodie Reseigh
4.15pm	Speaker Panel - Question session
4.50pm	THANK YOU AND CONCLUSION OF DAY ONE
5pm	NETWORKING DRINKS

DAY TWO

Friday 21 October 2016

9am	REGISTRATION (Tea and Coffee)
9.30am	Weed seed bank ecology, nutrients, species diversity Shaun Kennedy
10am	Lessons from the Grassy Groundcover Project Andrew Fairney
10.30am	Establishment of native grasses: The battle with invasives is fought underground Monique Smith
11am	Soil Microbiology for Novices and Native Grasses Dr Ash Martin
11.30am	Speaker Panel - Question session
12.00pm	LUNCH AND NETWORKING
12.45pm	Site Visit 1 City of Salisbury Seed Production Area
2.15pm	Site Visit 2 Gawler Buffer East
4.15pm	THANK YOU AND CONCLUSION OF FORUM

*All profits from the Forum will be allocated towards Landcare Restoration (on-ground works, monitoring and training) within the Northern Adelaide Plains and Foothills.





12 James Street, Salisbury SA 5108
T: 08 8406 8222 E: city@salisbury.sa.gov.au
salisbury.sa.gov.au

 facebook.com/cityofsalisbury  twitter.com/cityofsalisbury