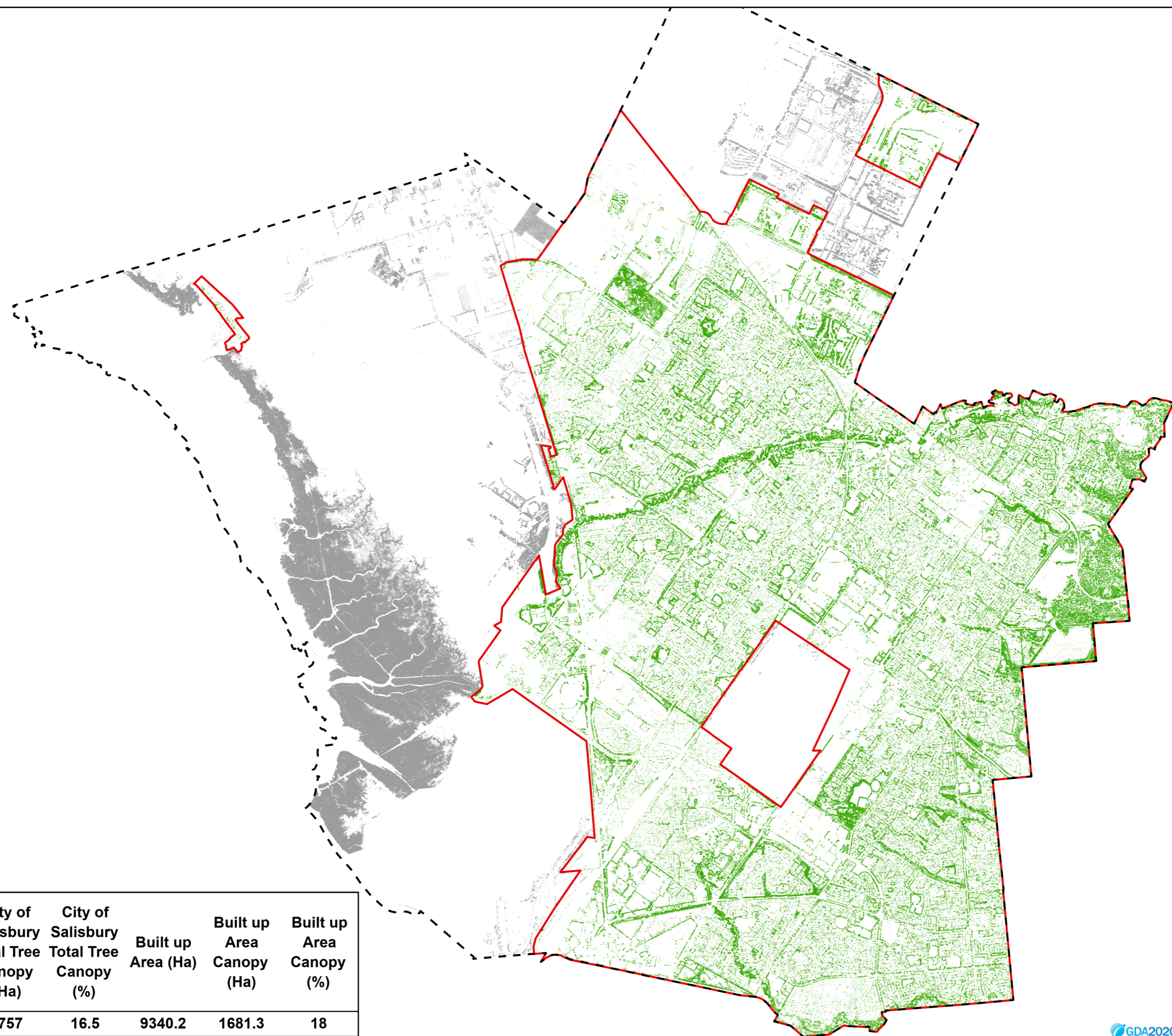


Tree Canopy Cover

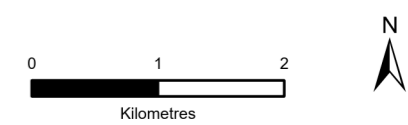
-  Land Development Zones (Built up Area)
-  Tree Canopy >3m Height (Built up Areas)
-  Tree Canopy >3m Height (Outside Built up Areas)

Data Sources:
 Land Development Zones (Planning Policy Areas) (DPTI): Identified zoning with more significant build environments. Excluded majority development zones west of Port Wakefield Road, Parafield and Edinburgh Airports.

Tree Canopy (Aerometrex 2018):
 Outlines the horizontal extent of the tree canopy that is three metres above normal ground level.



City of Salisbury (Ha)	City of Salisbury Total Tree Canopy (Ha)	City of Salisbury Total Tree Canopy (%)	Built up Area (Ha)	Built up Area Canopy (Ha)	Built up Area Canopy (%)
16682.8	2757	16.5	9340.2	1681.3	18



Scale @A3: 1:60,000
 Author: Mark Daker. Exported: 19/05/2020

DATA SOURCES: This map incorporates data which is © City of Salisbury, Govt. of South Australia, Imagery: Esri, DigitalGlobe, Aerometrex, Nearmap.

DISCLAIMER: Use of this map is at your sole risk. It is provided "AS IS" and may contain errors. The City of Salisbury expressly disclaims all warranties, express or implied, including, but not limited to the implied warranties of quality, accuracy or fitness for a particular purpose. The City of Salisbury does not warrant that the information contained in the Material can be relied upon.