

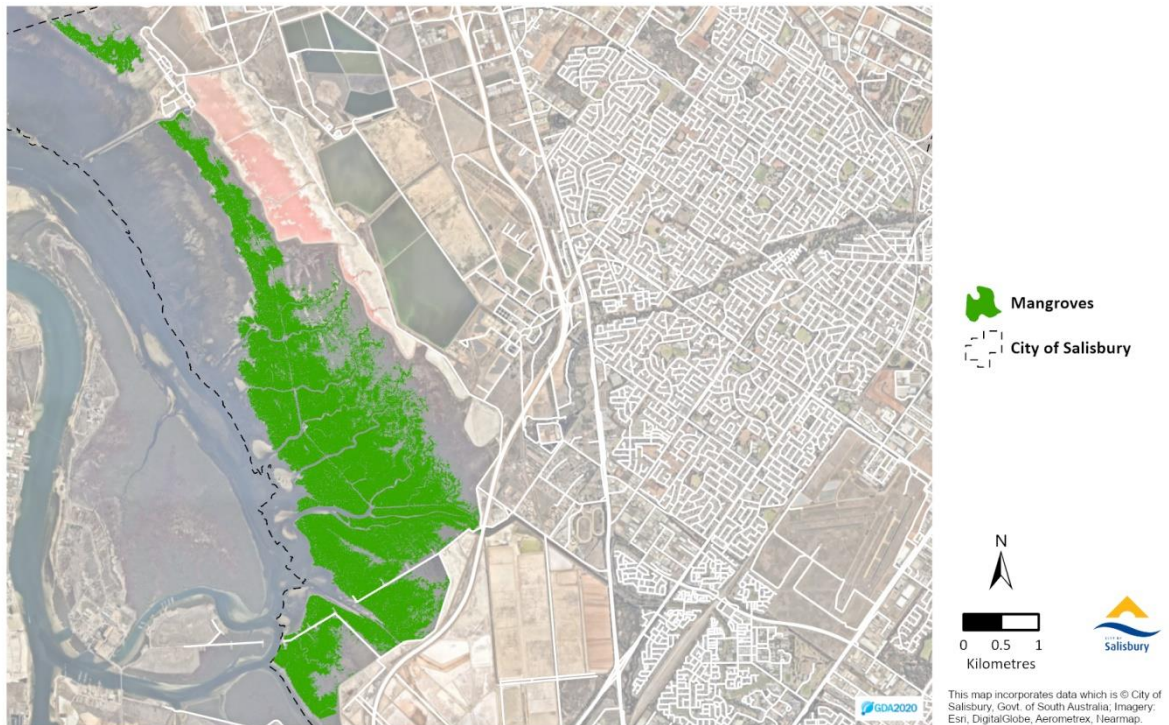
## Area covered by mangroves and samphire

**Headline Figure:** 13.4km<sup>2</sup> (8.5km<sup>2</sup> mangroves)

### Why this indicator is important

Mangroves and samphire provide a vital habit for wildlife, especially sea species, as a hatching nursery. Additionally, the mangroves prevent coastal erosion, act as flood mitigation and capture CO<sup>2</sup> in the atmosphere to reduce impacts due to global warming.

### Current Performance



### Source Data

Aerometrex Pty Ltd April 2020

### Further Information

Further information can be found at