

SALISBURY COMMUNITY HUB

Virtual Tour: www.salisbury.sa.gov.au/vt



4 Introduction

6 Ground Floor Meeting Rooms

8 *John Harvey Community Hall*

10 *Kaurna Rooms G2a and G2b*

11 *Meeting Rooms G3a and G3d*

12 *Event Space*

14 Level One Meeting Rooms

16 *The Little Para Conference Rooms*

18 *Settlers Terrace*

19 *Room 103*

19 *Room 104*

19 *Room 109*

20 *Dr Ruby Davy Room*

21 *Wittber Room*

22 *Helen Barnes Training Room*

23 Exhibition Spaces

24 Civic Plaza/Inparrinthe Kumangka

25 Event Kitchen & Catering Facilities

26 Places of Interest

27 Transport & Accommodation

Introduction



Welcome to the new Salisbury Community Hub, located in the northern Adelaide region only 25 km from the Adelaide Central Business District. The City of Salisbury has a population of 142,560 spanning over 31 suburbs, across 158 Km².



Salisbury is a City that provides opportunity for our residents, businesses and visitors through investment in its future, by valuing the natural environments, providing a great lifestyle, encouraging and supporting a vibrant and innovative culture and is a destination for business.

The Salisbury Community Hub is an exciting and innovative building that is the centrepiece of the revitalisation of the Salisbury City Centre and a place for the community to come together to exchange ideas, learn, participate and celebrate in a range of community spaces.

Boasting new technology, large open spaces and an indoor café, the Salisbury Community Hub has incorporated 16 bookable spaces available for community and business use. In designing the new building, we have merged the old with the new in retaining our outdoor playground and upgrading the heritage-listed cemetery.

Ground Floor Meeting Rooms

overview

Kaurna Rooms



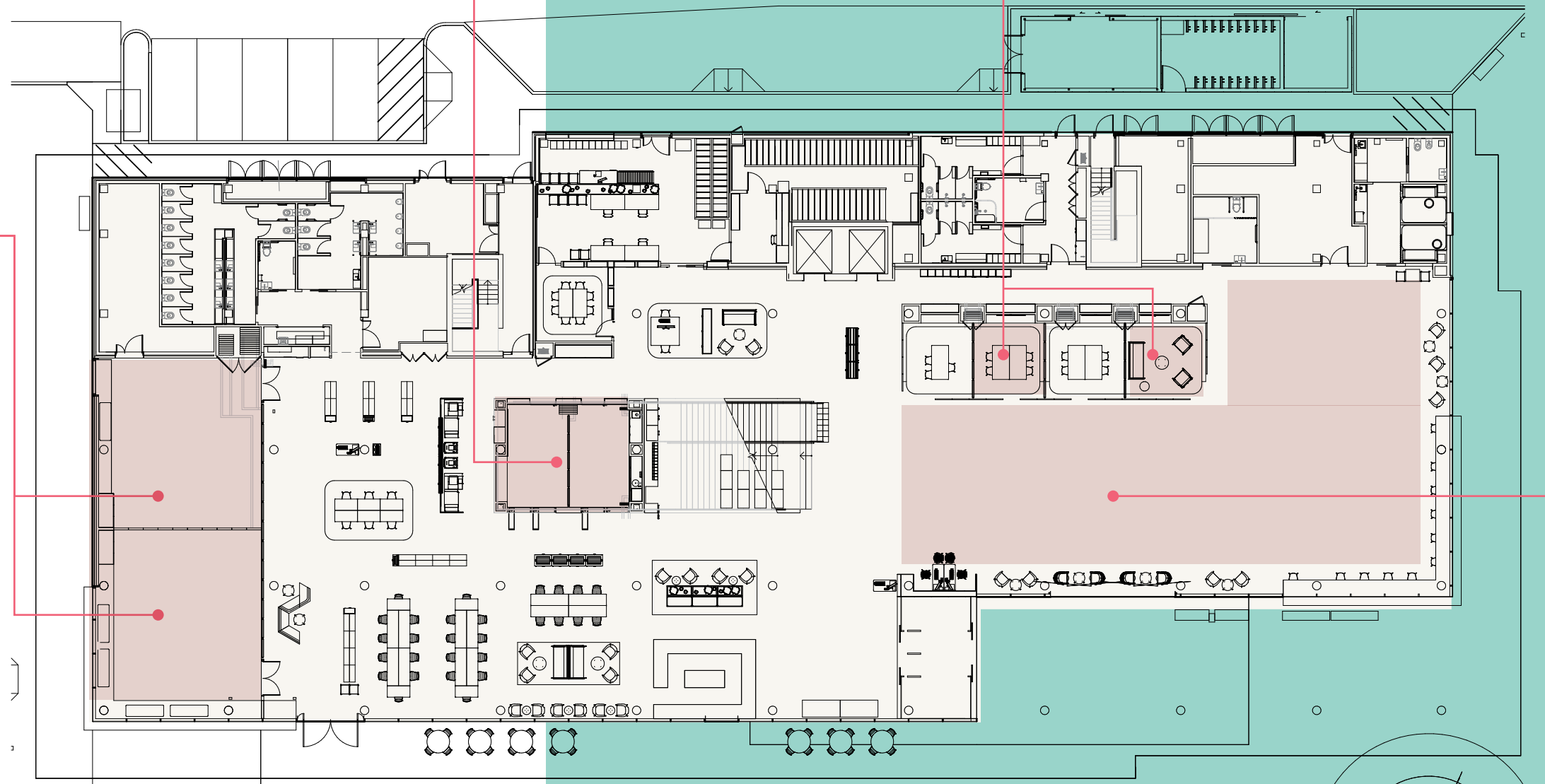
The John Harvey Community Hall



Rooms G3a, c & d



Event Space

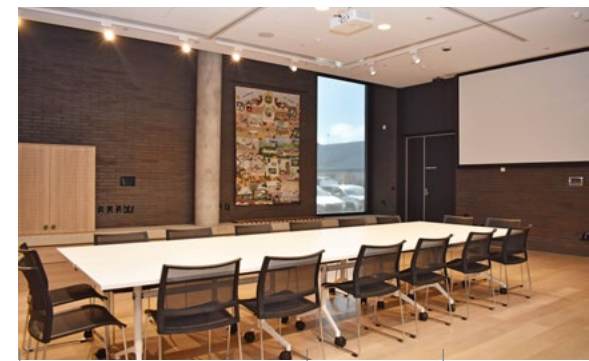
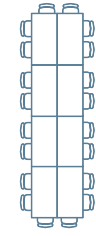




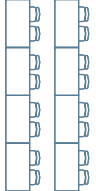
John Harvey Community Hall

The John Harvey Community Hall can be configured in a number of ways with a total capacity of up to 170 seats when the halls are combined. The John Harvey Community Halls G1a and G1b are situated on the ground floor of the Salisbury Community Hub.

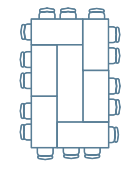
The halls boast high ceilings, a ceiling-mounted projector screen, touch panel for control of the blinds and audio with wireless or HDMI computer connectivity.



| Layout | Room | Capacity |
|-----------|------------|----------|
| Boardroom | G1a or G1b | 16 |



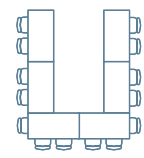
| Layout | Room | Capacity |
|-----------|------------|----------|
| Classroom | G1a or G1b | 18 |



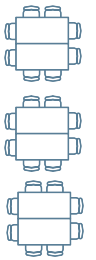
| Layout | Room | Capacity |
|---------------|------------|----------|
| Hollow Square | G1a or G1b | 28 |



| Layout | Room | Capacity |
|----------|------------|----------|
| Theatre | G1a or G1b | 66 |
| Combined | | 170 |



| Layout | Room | Capacity |
|----------|------------|----------|
| U-Shaped | G1a or G1b | 20 |



| Layout | Room | Capacity |
|----------|------------|----------|
| Workshop | G1a or G1b | 40 |



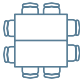
Kaurna Rooms

Kaurna Rooms 2a and 2b are great spaces for small, non-confidential meetings. Surrounded by glass doors and bookcases, the Kaurna rooms can accommodate up to 8 people comfortably. These rooms can be combined to increase your participant numbers up to 16 people. Included in the room (2b) is a sink, Zip boiling water tap and an oven. Please note there is no monitor or projector in these rooms.

|  | Layout | Room | Capacity |
|-------------------------------------------------------------------------------------|----------|------------|------------|
| | Workshop | G2a or G2b | 8 per room |

Meeting Rooms G3a, G3c & G3d

Rooms G3a, c & d are popular small meeting rooms. Perfect for that quick catch up or non-confidential meetings, these rooms can accommodate up to 4 people and include a monitor for sharing your work.

|  | Layout | Room | Capacity |
|-------------------------------------------------------------------------------------|----------|-------------|------------|
| | Workshop | G3a, c or d | 4 per room |







Event Space

Holding up to 300 people (theatre style), our event space can cater for all types of events from conferences to presentation dinners and even new car launches! The event space offers two projector screens, WIFI, automated blinds, presentation lighting and roving wireless microphones. It also has room for a stage at the southern end of the space.



Various configurations cater for differing numbers of participants.

Tilt Panel Opening



| | | | | |
|------------------------------------------------------------------------------------|-------------------------------------------------------------------------------------|---------|-------------|----------|
|  |  | Layout | Room | Capacity |
|  |  | Banquet | Event Space | 176 |



| | | | |
|-------------------------------------------------------------------------------------|---------|-------------|----------|
|  | Layout | Room | Capacity |
|  | Theatre | Event Space | 300 |

Level One Meeting Rooms

overview

Wittber Room



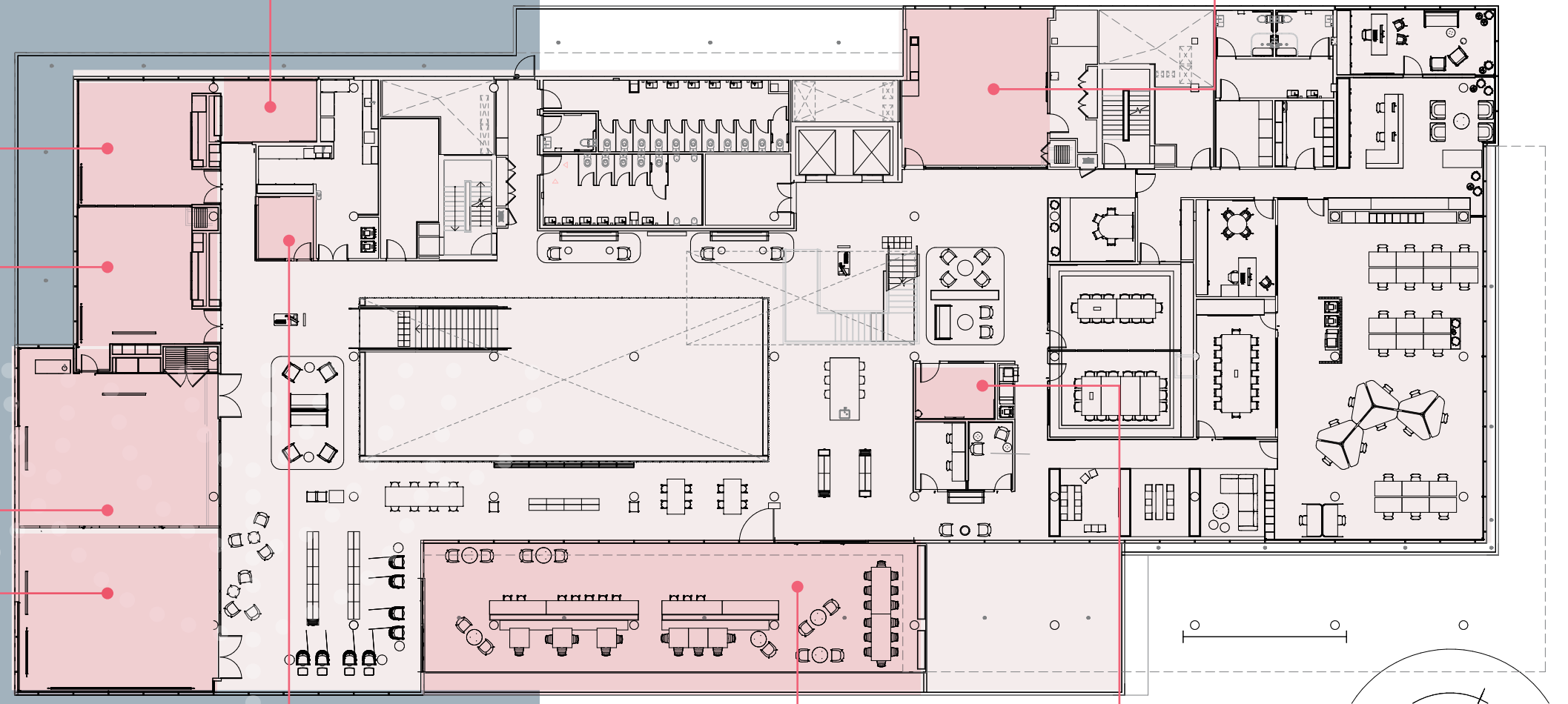
Dr Ruby Davy Room



The Little Para Conference Rooms 101a and 101b



Consists of eight meeting spaces all equipped with monitors or projectors for all your presentations. Some rooms may be joined to increase the number of participants in each space; others are suitable for 4 to 6 people.



Room 104



Room 103



Helen Barnes Training Room



Settlers Terrace



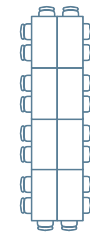
Room 109



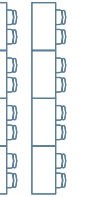


The Little Para Conference Rooms 101a and 101b

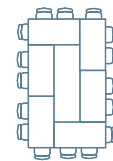
It is here where the wow factor is evident with acoustic panels enveloping the décor, floor to ceiling glass windows overlooking our heritage-listed cemetery and bespoke furniture. Our conference rooms can be joined to entice larger crowds or separated for a more intimate meeting space. This room also contains roving microphones and access to a foyer area giving the room more flexibility of uses.



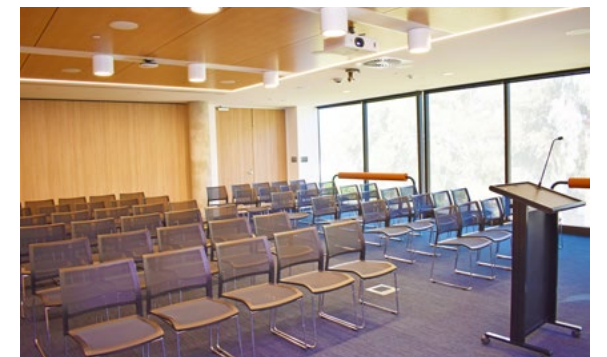
| Layout | Room | Capacity |
|-----------|--------------|----------|
| Boardroom | 101a or 101b | 16 |



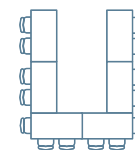
| Layout | Room | Capacity |
|-----------|--------------|----------|
| Classroom | 101a or 101b | 24 |



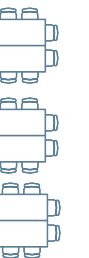
| Layout | Room | Capacity |
|---------------|--------------|----------|
| Hollow Square | 101a or 101b | 24 |



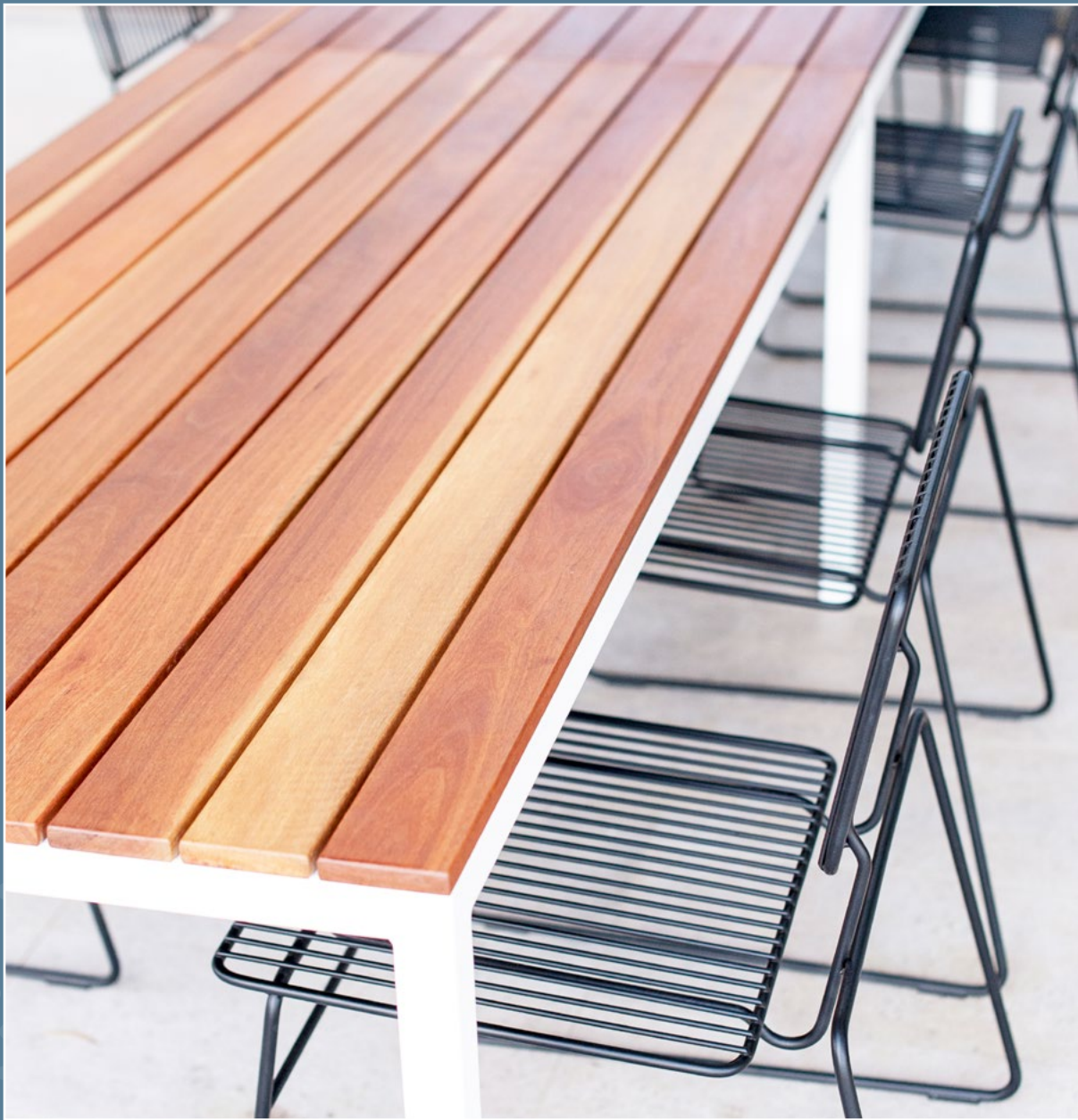
| Layout | Room | Capacity |
|----------|--------------|----------|
| Theatre | 101a or 101b | 60 |
| Combined | | 160 |



| Layout | Room | Capacity |
|----------|--------------|----------|
| U-Shaped | 101a or 101b | 18 |



| Layout | Room | Capacity |
|----------|--------------|----------|
| Workshop | 101a or 101b | 40 |



Settlers Terrace

Situated on our balcony outside our Conference rooms on level one, it comprises chairs and fixed tables and is a great way to bring the inside out and incorporate an outdoor feel to an indoor event. This area may be booked with any inside room booking.



| Layout | Room | Capacity |
|-----------|------------------|----------|
| Boardroom | Settlers Terrace | 16 |

Room 103

103 is a small meeting room that can accommodate up to 6 people. The room features office chairs, a floor-to-ceiling window with automated blinds, a large LED monitor allowing wireless connectivity from your device to display any group presentations and a video conferencing facility.



| Layout | Room | Capacity |
|---------|------|----------|
| 1 table | 103 | 4 |



Room 104

104 is a round table meeting room with a monitor and easy wireless connectivity. It can seat up to 4 people.



| Layout | Room | Capacity |
|---------|------|----------|
| 1 table | 104 | 4 |



Room 109

109 is a small meeting room with a monitor and easy wireless connectivity. It can seat up to 4 people.



| Layout | Room | Capacity |
|---------|------|----------|
| 1 table | 109 | 4 |



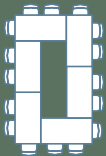


Dr Ruby Davy Room

Named after Salisbury's first Doctor of Music, the Dr Ruby Davy room boasts bespoke office furniture, acoustic walls, ceiling mounted motorised projector and wireless connectivity. The room can seat a various number of participants in varying configurations from 12 to 24. It can also be joined with the Wittber Room located next door.



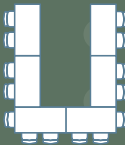
| Layout | Room | Capacity |
|-----------|--------------|----------|
| Classroom | Dr Ruby Davy | 12 |



| Layout | Room | Capacity |
|---------------|--------------|----------|
| Hollow Square | Dr Ruby Davy | 18 |



| Layout | Room | Capacity |
|---------|--------------|----------|
| Theatre | Dr Ruby Davy | 24 |



| Layout | Room | Capacity |
|----------|--------------|----------|
| U-Shaped | Dr Ruby Davy | 14 |



| Layout | Room | Capacity |
|----------|--------------|----------|
| Workshop | Dr Ruby Davy | 22 |

Wittber Room

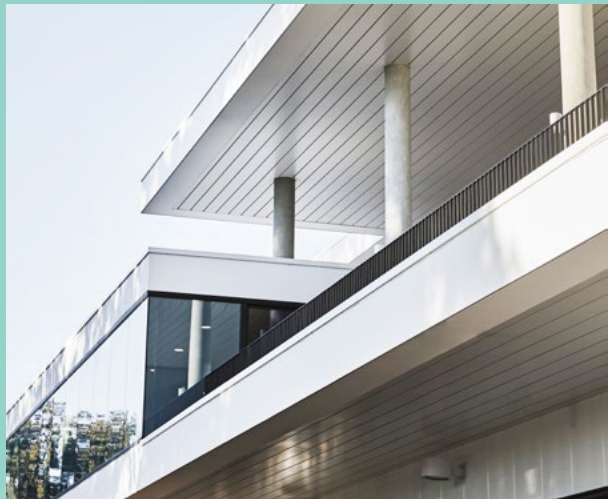
Located in the north east corner of Level One, the Wittber Room is ideal for smaller corporate meetings. The room contains a monitor with easy wireless connectivity, luxury office furniture, acoustic walling and video conferencing functionality. The Wittber Room can be joined with its nextdoor neighbour, the Dr Ruby Davy Room, to cater to an increased number of participants for your next meeting.



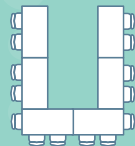
| Layout | Room | Capacity |
|-----------|----------|----------|
| Boardroom | Combined | 30 |



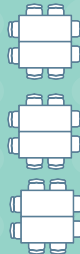
| Layout | Room | Capacity |
|-----------|--------------|----------|
| Classroom | Wittber Room | 12 |



| Layout | Room | Capacity |
|---------|--------------|----------|
| Theatre | Wittber Room | 21 |



| Layout | Room | Capacity |
|----------|--------------|----------|
| U-Shaped | Wittber Room | 14 |

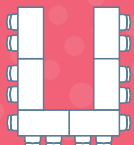


| Layout | Room | Capacity |
|----------|--------------|----------|
| Workshop | Wittber Room | 16 |



Helen Barnes Training Room

Our training room is second to none, showcasing the latest and greatest in technology. The Helen Barnes Training Room offers wireless connectivity, two large LED monitors, a whiteboard, and can be used for a multitude of different events.



| Layout | Room | Capacity |
|----------|--------------|----------|
| U-Shaped | Helen Barnes | 16 |

Exhibition Spaces

We offer exhibition wall space and cabinets on our Ground and Level One floors. These are available for small and large exhibitions. With moveable panels, the main gallery can be configured in a range of ways to best showcase works of art or other displays and exhibitions.



Civic Plaza/Inparrinthe Kumangka



Create that perfect outdoor event experience in our newly renovated Civic Plaza, located in the heart of the Salisbury City Centre. The Civic Plaza lights up at night with beautifully designed outdoor lighting giving any function that special touch. The Civic Plaza features a children's playground, water feature and large LED Screen.

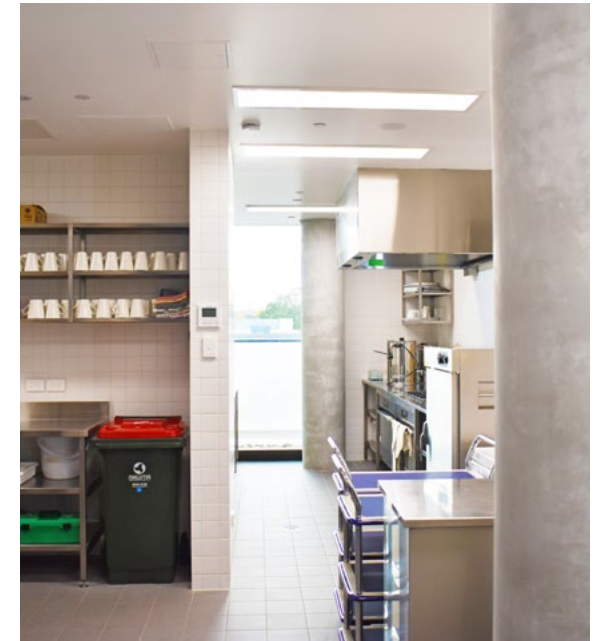


Event Kitchen & Catering Facilities

The Event Kitchen is a preparatory space for external caterers to heat and plate up food for any events. The Event Kitchen comprises of two 900mm ovens, an industrial dishwasher, stainless steel benches, commercial fridge, large sinks and commercial warming racks.

At the Salisbury Community Hub we offer the use of our Event Kitchen for self-catering or use for your own caterer coming in.

We can also provide a list of caterers who we have used for Hub events.



Places of Interest



St Kilda Adventure Playground

Offers many attractions including a huge castle with draw bridge, bouncy boomerang, flying fox, pirate ship, basketball courts and more.

The playground also offers a picnic area, BBQ facilities, toilets and ample parking.



National Military Vehicle Museum

The National Military Vehicle Museum showcases vehicles and items ranging from the First World War to current times. Located within the defence precinct of Edinburgh Parks.



Adelaide Flight Experience

Come and experience what it's like to be the Captain of a simulated jet airliner.



Adelaide Planetarium

Come to UniSA's Adelaide Planetarium at Mawson Lakes and learn all about the constellations, stars and planets.



Greenfields Wetlands

Explore the natural beauty of the Greenfields Wetlands located off the Salisbury Highway at Mawson Lakes. You can discover some of the 160 bird species, frogs, fish & fauna that inhabit this unique environment.



Cobbler Creek Mountain Bike Trails

Go mountain bike riding in Cobbler Creek Recreation Park and experience the thrilling natural surroundings.

Accommodation & Transport



Mawson Lakes Hotel

In the heart of Mawson Lakes is the 100% South Australian owned Mawson Lakes Hotel. Here you can grab a bite to eat, or take a stroll down the main street for a spot of shopping.



Mawson Lakes Quest Apartments

Offering serviced style apartment rooms with a comfortable feel, the Quest Apartments are perfect for a short or long stay. Situated near the University of South Australia and Technology Park, the Quest is perfect for that corporate stay or relaxed family holiday.



Old Spot Hotel

Country style accommodation with warm hospitality and great food. Great place for getting together and sharing a laugh and a drink.



Highway 1 Caravan and Tourist Park

Situated on Port Wakefield Road, Highway 1 is home to more than 80 fully self-contained units and cabins and more than 100 campsites which are nestled on upwards of 20 acres of tropical gardens.



St Kilda RV Site

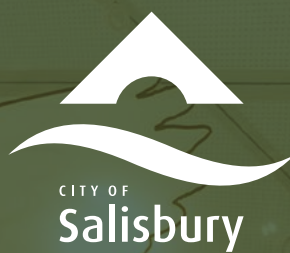
Offering overnight parking at the boat ramp car park. The parking area offers close proximity to toilet facilities and a view of the St Kilda Marina.



Transport

Only 40 mins from the City and 45 mins to the Barossa Valley, the Salisbury Community Hub is a perfect spot to hold your next function.

Only 2 mins walk from the local train station and buses arriving every 5 mins, Salisbury City Centre is extremely accessible to all.



**Salisbury
Community
Hub**

Salisbury Community Hub
34 Church Street
Salisbury SA 5108
8406 8222

Virtual Tour: www.salisbury.sa.gov.au/vt