

Children and Youth

Reel Kidz SA

Drama classes for kids.

Wednesdays, 3.30pm to 4.15pm

AGES: 5 to 7 years

Fridays, 5pm to 6pm

AGES: 8 to 14 years

(during school term)

E: laurie_rea@hotmail.com

Immunisation

The City of Salisbury provides a free immunisation service for eligible persons up to 19 years of age and catch up immunisations for secondary school students.

This service is administered by Health and Immunisation Services at four locations. Bring your child's immunisation record book and your Medicare card when you attend. No bookings required.

First Thursday of the month, 3.45pm to 6.45pm

T: 8152 0363

E: admin@haims.com.au

Maggie Moo Music

Little kids music and movement class these April school holidays

Wednesdays and Thursdays, 9.30am for AGES: 0 to 5 years

11am for AGES: 0 to 18 months

E: michelleharrison@maggiemoomusic.com.au



Neuplex STEM Tutor Classes

Mainstream and home school families welcome.

Thursday afternoons, multiple times available. Contact for more information.

E: thomasktman@yahoo.com.au

Chess School SA

Learn how to play chess!

Mondays on 15 April, 8 July, 30 September and 16 December, 2024

W: <https://chessschool.com.au/holidaychess/>

E: admin@chessschool.com.au



Adult Learning Programs

Basic Tech

Come along and enjoy a free one on one session with one of our friendly library staff to learn how to use basic tech. Please bring your own device (ie computer, laptop, ipad etc) with you.

Fridays, 9.30am to 10.15am

AGES: All ages

COST: FREE

Bookings essential.

W: www.salisbury.sa.gov.au/digitalliteracy

Conversational English Class

Social learning group. Intermediate level. English required. All visa types excepted. Refreshments provided.

Fridays, 9.30am to 11.30am

COST: FREE



Social Activities

Men's Meet Up Group

Come along and build meaningful connection!

Fourth Monday of the month, 7.30pm to 9pm

W: [meetup.com/Adelaide-MensGroup](https://www.meetup.com/Adelaide-MensGroup)

T: 0414 545 935

Over 50s Group

Enjoy a casual catch up and a cuppa!

First Thursday of the month, 7.30pm to 9pm

T: 0413 089 596

COST: \$10 for annual membership, \$3 per session

Interest Groups

Mawson Lakes Quilting Friends

All levels welcome, limited materials are available.

First, third and fifth Saturdays of the month, 9am to 5pm

T: 0417 813 023

Deaf Connect

Auslan classes.

Wednesdays, 6pm to 8pm

To book contact Julie:

T: 07 3892 8500

W: auslan@deafconnect.org.au

Mawson Lakes Probus Club

Retired? Looking to make new friends?

Second Fridays of the month, 10am to 12pm

T: 0499 853 914 or 0422 338 009

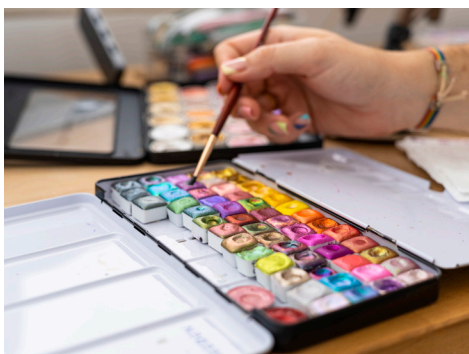
E: mawsonprobus@gmail.com

Combined Art Class - That Painting Place

Students provide own materials.

Fridays, 10am to 12pm and 1pm to 3pm

T: 0414 841 663



Mawson Lakes Photography Club

First and third Thursdays of the month, 7.30pm to 9.30pm

E: president@mawsonlakesphotographyclub.org.au

Mawson Lakes Striders Club

Meet at the Mawson Interchange (enclosed lounge area) with water and comfortable shoes.

Mondays, Wednesdays and Fridays 8.30am to 9.30am

COST: FREE

T: 0455 977 775 or 0413 433 275

Park Run: Mawson Lakes

Get fit for FREE! Run or walk 5km. Meet at the lake.

Saturdays, 8am

W: www.parkrun.com.au/register

Mawson Lakes Rotary Club

Thursdays, 7pm to 9pm

E: secretary@rotarymawsonlakes.org.au

Mawson Lakes Garden Club

Fourth Tuesdays of the month, 7.30pm

Membership cost: \$20 per year

T: 0417 824 063

Bollywood Dance

This is a great way to keep yourself fit whilst having fun! Performance opportunities are provided for students of all ages. All age groups welcome.

Saturdays, 12pm to 2pm

Wednesdays, 6pm to 8pm

T: 0425 761 360 or 0466 772 138

E: kalalayaadelaide@gmail.com

Punjabi Dance

Children's classes.

Thursdays, 6pm to 8pm

T: 0430 211 823

Knitting and Crochet

Experienced teacher will guide you through your personal projects. Learn to read patterns and identify different yarns. Suits all levels and ages.

Mondays, 1pm to 3pm

COST: \$3 per class

T: 8302 5449



Big IDEAS for my community

Share with us your BIG IDEAS and how they might look within the Salisbury community.

E: enquiriesmawsoncentre@salisbury.sa.gov.au

Contact us

A: 2-8 Main Street Mawson Lakes

T: 8302 5449 **E:** enquiriesmawsoncentre@salisbury.sa.gov.au

W: salisbury.sa.gov.au/mawsoncentre  /TheMawsonCentre