

### Children and Youth

#### Reel Kidz SA

Drama classes for kids.

**Fridays , 4pm to 5pm**

**AGES: 5 to 7 years**

**Fridays, 5pm to 6pm**

**AGES: 8 to 14 years**

**E:** [laurie\\_rea@hotmail.com](mailto:laurie_rea@hotmail.com)

---

#### Immunisation

The City of Salisbury provides a free immunisation service for eligible persons up to 19 years of age and catch up immunisations for secondary school students. This service is administered by Health and Immunisation Services at four locations. Bring your child's immunisation record book and your Medicare card when you attend. No bookings required.

**First Thursday of the month,  
3.45pm to 6.45pm**

**E:** [admin@haims.com.au](mailto:admin@haims.com.au)

---

#### Maggie Moo Music

25min music and movement session + 25min free play which provides a chance for families to mingle afterwards.

**Wednesdays, commencing 6  
March:**

**9.45am for AGES: 0 to 18 months**

**10.45am for AGES: 1 to 5 years**

**E:**  
[enquiriesmawsoncentre@salisbury.sa.gov.au](mailto:enquiriesmawsoncentre@salisbury.sa.gov.au)



#### Neplex STEM Tutor Classes

Mainstream and home school families welcome.

**Wednesday and Thursday  
afternoons, mutiple times  
available . Contact for more  
information.**

**E:** [thomasktman@yahoo.com.au](mailto:thomasktman@yahoo.com.au)

---

#### Chess School SA

Learn how to play chess!

**Mondays on 15 April, 8 July, 30  
September and 16 December,  
2024**

**W:** <https://chessschool.com.au/holidaychess/>

**E:** [admin@chessschool.com.au](mailto:admin@chessschool.com.au)



### Adult Learning Programs

#### Basic Tech

Come along and enjoy a free one on one session with one of our friendly library staff to learn how to use basic tech. Please bring your own device (ie computer, laptop, ipad etc) with you.

**Fridays, 9.30am to 10.15am**

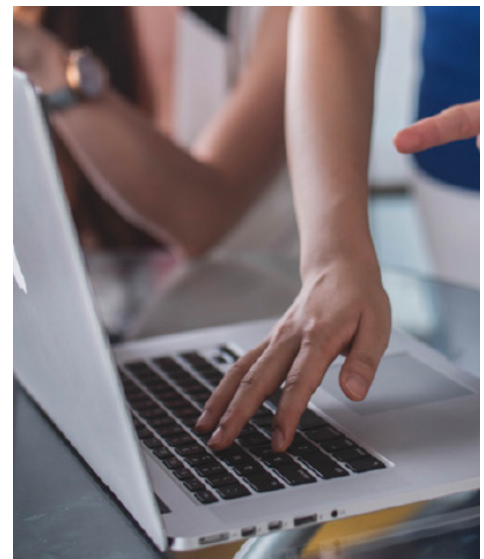
**AGES: All ages**

**COST: FREE**

**Bookings esential.**

**W:** [www.salisbury.sa.gov.au/digitalliteracy](http://www.salisbury.sa.gov.au/digitalliteracy)

---



#### Conversational English Class

Social learning group. Intermediate level. English required. All visa types excepted. Refreshments provided.

**Fridays, 9.30am to 11.30am**

**COST: FREE**

---

### Deaf Connect

Auslan classes.

**Wednesdays, 6pm to 8pm**

To book contact Julie:

**T:** 07 3892 8500

**W:** [auslan@deafconnect.org.au](mailto:auslan@deafconnect.org.au)

### Interest Groups

#### Care Bear Knitters Club

Undertake crochet and knitting, creating Care Bears for donation to children.

**Tuesdays (fortnightly), 1pm to 3pm**

**COST: FREE**

**T: 8302 5449**

#### Combined Art Class - That Painting Place

Students provide own materials

**Fridays, 10am to 12pm and 1pm to 3pm**

**T: 0414 841 663**



#### Mawson Lakes Probus Club

Retired? Looking to make new friends?

**Every 2nd Friday of the month, 10am to 12pm**

**T: 0499 853 914 or 0422 338 009**

**E:** [mawsonprobus@gmail.com](mailto:mawsonprobus@gmail.com)

#### Mawson Lakes Photography Club

**1st and 3rd Thursday of each month, 7.30pm to 9.30pm**

**E:** [president@mawsonlakesphotographyclub.org.au](mailto:president@mawsonlakesphotographyclub.org.au)

#### Mawson Lakes Striders Club

Meet at the Mawson Interchange (enclosed lounge area) with water and comfortable shoes.

**Mon, Wed and Fri, 8.30am to 9.30am**

**COST: FREE**

**T: 0455 977 775 or 0413 433 275**

#### Park Run

Get fit for FREE! Run or walk 5km. Meet at the lake.

**Saturdays, 8am**

**W:** [www.parkrun.com.au/register](http://www.parkrun.com.au/register)

#### Bollywood Dance

This is a great way to keep yourself fit whilst having fun! Performance opportunities are provided for students of all ages. All age groups welcome.

**Saturday, 12pm to 2pm**

**Wednesday, 6pm to 8pm**

**T: 0425761 360 or 0466 772 138**

**E:** [kalalayaadelaide@gmail.com](mailto:kalalayaadelaide@gmail.com)

#### Punjabi Dance

Children's classes.

**Thursdays, 6pm to 8pm**

**T: 0430 211 823**

#### Knitting and Crochet

Experienced teacher will guide you through your personal projects. Learn to read patterns and identify different yarns. Suits all levels and ages.

**Mondays, 1pm to 3pm**

**COST: \$3 per class**

**T: 8302 5449**

### Contact us

**A:** 2-8 Main Street Mawson Lakes

**T:** 8302 5449 **E:** [enquiries@mawsoncentre@salisbury.sa.gov.au](mailto:enquiries@mawsoncentre@salisbury.sa.gov.au)

**W:** [salisbury.sa.gov.au/mawsoncentre](http://salisbury.sa.gov.au/mawsoncentre)  /TheMawsonCentre