



NEW AWARDS SALUTE SALISBURY LEGENDS



Program of the Year

Pooraka Community Centre learning program making a real difference



Eyeing off a World Title

Salisbury boxer returns from the AIBA World Championships



Summer Fun in Salisbury

Check out these picturesque and challenging walking and cycling trails

LAND NOW SELLING

EVANSTON SOUTH

20 DISPLAY HOMES NOW OPEN

- New reserve with lake, playgrounds and BBQ's
- Direct access to Trinity College coming soon

Lanser Realty RLA 268 669

Aspire
AT EVANSTON SOUTH

aspirebylanser.com.au

VIRGINIA

LIFESTYLE BLOCKS UP TO 750m²

- Largest lots in the North
- Only 35 minutes from the Adelaide CBD

Lanser Realty RLA 268 669 | First National Peoples' Choice RLA 222 770

**VIRGINIA
· GROVE ·**
THE GREEN

VIRGINIAGROVE.COM.AU

MOUNT BARKER

THE MAPLE COLLECTION REGISTER NOW

- See the bigger picture
- Picturesque master-planned community

Ray White Mount Barker RLA 199 254


ASTON HILLS
at Mount Barker

astonhills.com.au

FREELING

LOTS OVER 1,000sqm NOW SELLING

- Award-winning development
- Family friendly haven in a vibrant town

First National Peoples' Choice RLA 222 770


Freeling
freelingestate.com.au

Visit lanser.com.au
Call 08 8132 1115

 **LANSER**
COMMUNITIES



A MESSAGE FROM THE MAYOR

It is currently an exciting time to be living in the City of Salisbury. We have recently seen major investment announcements and incredible opportunities open up, which are going to change the landscape of Salisbury, bringing significant investment and jobs including:

- The State and Federal governments' commitment to the \$985 million Northern Connector,
- Announcement of a new food park on the Parafield Airport site; and
- The Adelaide Produce Markets' intention to add 70,000 square metres to their fresh food precinct.

In addition, we have high expectations for possible future urban development at the saltfields site west of Port Wakefield Road and the potential development of the Greater Edinburgh Parks area north of Heaslip Road.

As part of our ongoing Salisbury City Centre Renewal, Council is developing a vision for the establishment of a regional community hub in the CBD, which will be a key component in revitalising the Salisbury City Centre. We are reviewing all community, civic and

administration facilities in the City Centre and it's Council's intention to make a multi-million dollar investment into the hub, which will help us deliver improved civic and community services, and attract more people to live, work and play in our city.

Council is also looking forward to the upcoming release of the Northern Economic Plan, which will map a pathway to increasing business confidence, investment, jobs, productivity and exports from our region. We are actively involved in the development of the Plan and are undertaking projects that have a higher social and economic value to the northern Adelaide region as a whole. This includes strengthening our relationships with the Federal and South Australian Governments, our adjoining councils of Playford and Port Adelaide-Enfield, and the private sector.

Gillian Aldridge JP, Mayor of Salisbury

MAYOR



Gillian Aldridge JP
0411 703 706
galdridge@salisbury.sa.gov.au

CENTRAL WARD



Cr David Balaza, Deputy
Mayor Nov 2015-Nov 2016
0431 111 264
dbalaza@salisbury.sa.gov.au



Cr Betty Gill JP
0417 868 283
bgill@salisbury.sa.gov.au

PARA WARD



Cr Robyn Cook
rcook@salisbury.sa.gov.au



Cr Riccardo Zahra
0416 191 697
rzahra@salisbury.sa.gov.au

HILLS WARD



Cr David Bryant
0414 457 419
dbryant@salisbury.sa.gov.au



Cr Shiralee Reardon JP
sreardon@salisbury.sa.gov.au

LEVELS WARD



Cr Steve White
0498 490 346
swhite@salisbury.sa.gov.au



Cr Brad Vermeer, Deputy
Mayor Nov 2014-Nov 2015
0404 327 672
bvermeer@salisbury.sa.gov.au

SOUTH WARD



Cr Sean Bedford
0422 019 079
sbedford@salisbury.sa.gov.au



Cr Julie Woodman JP
0431 188 788
jwoodman@salisbury.sa.gov.au

EAST WARD



Cr Joe Caruso
0418 848 295
jcaruso@salisbury.sa.gov.au



Cr Damien Pilkington
0411 690 805
dpilkington@salisbury.sa.gov.au

NORTH WARD



Cr Linda Caruso
0412 961 690
lcaruso@salisbury.sa.gov.au



Cr Graham Reynolds
0413 966 500
greynolds@salisbury.sa.gov.au

WEST WARD



Cr Chad Buchanan JP
0403 677 807
cbuchanan@salisbury.sa.gov.au



Cr Donna Proleta
dproleta@salisbury.sa.gov.au

CONTENTS

FEATURES

- 08 Meet the inaugural City of Salisbury Legends Awards winners
- 14 Come and celebrate all that the St Kilda Township has to offer
- 18 Looking for something to do in Salisbury this Summer?
- 24 Settling well into Salisbury



REGULARS

- 3 Mayor’s Foreword
- 5 My Salisbury
- 6 Salisbury Community
- 11 Out and About
- 12 Youth Stuff
- 13 Sharp Minds
- 17 Creative Community
- 21 Sporting Salisbury
- 22 Council Report
- 25 Doing Business
- 26 Community Engagement
- 29 Your Area
- 30 Get in Touch
- 31 Calendar of Events



ON THE COVER: The 2015 Legends Awards winners



SALISBURY AWARE

Editor CRAIG TRELOAR

Editorial Team CRAIG TRELOAR
AMANDA SOMERVILLE
BRITTANY WARREN

Feature Writers CRAIG TRELOAR

Contributors CHRISTY MARTIN
TABATHA PETTIGREW
BIANCA LEWIS
MARK PURDIE

Production and Graphic Design NICOLE ASPINALL
GRAPHIC DESIGN

Photography BLUE RAZOO

Printing NEWSTYLE PRINTING

Distribution PMP

Advertising WALSH MEDIA
8221 5600

Circulation 55,000

HAVE YOUR SAY

This is your community magazine and you are encouraged to send story ideas and photographs for consideration for publication in future editions of Salisbury Aware.

Please address all correspondence to:
Craig Treloar, Editor Salisbury Aware,
City of Salisbury PO Box 8 Salisbury 5108

Fax: 8281 5466
Email: salisburyaware@salisbury.sa.gov.au
Web: www.salisbury.sa.gov.au/salisburyaware

PHOTOS FOR SALE

If you or someone you know had their photo published in this edition of Salisbury Aware, you can purchase the featured photograph for a small cost. Professional photographs are available for purchase through the Council Office at 12 James Street, Salisbury. Simply fill out an order form at the reception desk and make your payment with a customer service representative. Your order will be delivered to you within 14 working days.

AVAILABLE IMAGE SIZES and PRICES:

4x6"	\$5	5x7"	\$10
6x8"	\$15	8x10"	\$18
8x12"	\$20	Prices include postage and GST	

EXTRA PUBLICATION COPIES:

If you would like additional copies of Salisbury Aware, you can purchase them at \$2.50 each by visiting Salisbury Council, 12 James Street, Salisbury.

RELAYERS RALLYING AGAINST CANCER

ADELAIDE Northern Relay For Life organisers are aiming for 35 team registrations and are hoping to raise \$120,000 to help South Australian's affected by cancer.

Relay For Life provides a great opportunity for communities to recognise and celebrate those who have overcome cancer or are undergoing treatment, those who care for people with cancer and to celebrate the memory of those who have lost their battles.

Northern Adelaide's Alison Warner is extremely passionate about raising funds with both her mother and sister having battled breast cancer, and a dear friend having lost her fight against brain cancer.

Alison has faced her own personal battle, having to undergo a "confronting" double mastectomy after being diagnosed with breast cancer herself. Thankfully the cancer had not spread and Alison did not require further treatment after the surgery. As much as Alison and her family and friends have been through, she is just as determined to be positive and continue to fight cancer by raising funds for her team in the Adelaide Northern Relay For Life.

"The positive from this experience is that I have become more determined in my fight because when cancer struck me, it became much more personal," she said. "My husband and I had a good relationship before this, but now it is all the more stronger."

Turning her attention to Relay For Life, Alison (and her team), have participated in seven relays and raised a staggering \$103,167 for Cancer Council. "I believe it is so important to give back in this world and feel like you have made a difference," she added.

The Adelaide Northern Relay For Life will be held on Saturday 2 and Sunday 3 April 2016 at Rundle Reserve, Rundle Rd, Salisbury South.

CALLING ALL ARTISTS

AN initiative of the City of Salisbury, the Watershed Art Prize encourages awareness of water as a precious resource and significant environmental issue.

South Australian artists will again have the opportunity to submit artworks relating to the theme of wetlands biodiversity and/or water sustainability in a wide variety of categories. Entries for the 2016 Watershed Art Prize open soon. For more information please visit www.salisbury.sa.gov.au/watershedartprize



CAROLS EXPECTING BUMPER CROWD

THIS year's Tyndale Community Carols – one of the region's most popular family Christmas events – is expecting to attract up to 5,000 people next month.

The annual event will commence at 5pm on Sunday 6 December with children's activities such as face-painting and jumping castles before the main program gets underway. This hugely popular event will once again feature community choirs, puppets and drama performances, ending with a fireworks display. The community carols will be held at the Tyndale Christian School Oval at 50 Fern Grove Boulevard, Salisbury East.

CITY OF SALISBURY'S CALENDAR OUT NOW!

SALISBURY'S much anticipated FREE annual calendar will be available next month.

With listings of events around Salisbury and Adelaide, and important dates already marked for you, the Salisbury Calendar is a handy tool for every household.

Next year's calendar features some of the Hidden Gems of Salisbury. Grab a copy from Salisbury Council at 12 James Street, Salisbury or from your local recreation centre, library or community centre.



HIGH PRAISE FOR LEARNING PROGRAM

AN adult learning program achieving great results in the local community has been recognised with a major award.

Pooraka Farm Community Centre won the 2015 Adult Learners' Week Adult Learning Program of the Year Award for their innovative efforts to support and develop our community's aspirational and educational goals.

Pooraka Farm Community Centre offers both accredited and non-accredited programs including education courses and foundation skills in aged care, carpentry, literacy and returning to work. The courses help adults explore opportunities for personal development and employment.

"The best part is to see people come into the Centre with little confidence in themselves and leave with more skills to enter the workforce," said program manager Heather Hewitt. "You can really see the difference in their confidence and abilities."

The programs are generally run throughout the year, led by volunteer and mentor support officers. "The number of enrolments depends on the course itself, but generally range from 10-20 people, so they have been well received," said Heather.

Adult Learners' Week is an international festival of adult learning held in the first week of September each year and has been celebrated in Australia since 1995. The Week celebrates and promotes all forms of adult learning, encouraging those not currently engaged in community activities or learning, to come and try something new.



For more information, please visit pfcc.salisburysa.com or alternatively, visit Pooraka Farm Community Centre at 126 Henderson Avenue, Pooraka.



Beverly Neville, Melissa Staltari, Heather Hewitt, Cindy Sheridan, Jassie Kang, Sergio Rivera, Bev Standen and Ruth Tscharke

ALL SET FOR THIRD SECRET GARDEN

THE third annual Salisbury Secret Garden will once again transform the city centre into a hub of creativity, excitement and entertainment as part of the 2016 Adelaide Fringe.

Mayor Gillian Aldridge said Salisbury Secret Garden will be held over 11 days from 18 to 28 February 2016 at venues throughout the Salisbury City Centre. "The third Salisbury Secret Garden program will be jam-packed with exciting, peculiar and professional performances from a diverse range of genres," Mayor Aldridge said. "And Council will once again be hosting free family fun evenings in the city centre, which attracted more than 2,000 visitors in 2015 – so keep an eye out for the program for full details."



Large crowds are again expected at the 2016 Salisbury Secret Garden

The Salisbury Secret Garden Guide will be released soon outlining all the wonderful international and local acts performing in 2016. You can also stay up-to-date by 'Liking' us on Facebook at www.facebook.com/salisburysecretgarden

In 2015, Salisbury Secret Garden was the biggest Fringe Hub outside of metropolitan Adelaide and comprised 100 free or low cost Fringe events in 10 venues over 11 days. A final assessment revealed the 2015 event attracted about 7,500 people including more than 2,000 children who participated in the OPAL Schools Program in Civic Square, and Salisbury Secret Garden has reached more than 5,000 followers on social media.



RE-USE TRAIL PROVES POPULAR

DOZENS of residents and community groups throughout the City of Salisbury joined the 2015 Garage Sale Trail on Saturday 24 October.

An award-winning community and sustainability event, Garage Sale Trail involves more than 150 councils and thousands of garage sales right across the country. This year was the second time Salisbury, and South Australia, has participated in the event.

"By encouraging residents to hold garage sales on the same day, the event promotes re-use, reduces waste to landfill, brings

communities together and enables fundraising," said Mayor Gillian Aldridge.

Sales were held around the City of Salisbury including Mawson Lakes, Parafield, Pooraka, and even the National Military Vehicle Museum at Edinburgh held a family day which included having the museum open, a sausage sizzle, hotdogs and drinks, many interesting items for sale and the

community was welcome to hold a car boot sale on site.

At the time of publication the final statistics for the 2015 were not available, but preliminary results suggest more than \$1,100 was raised for charity throughout Salisbury, about 500 shopping trolleys of products exchanged hands, and 100% of participants pledged not to illegally dump.

WORDS Craig Treloar | PHOTOGRAPHS ashkate photography

LEGENDS OF OUR COMMUNITY

WINNERS of the City of Salisbury’s prestigious new recognition program titled The Legends Awards were announced on 28 October at the John Harvey Gallery.

Mayor Gillian Aldridge said the well-attended evening was an exciting opportunity to recognise some outstanding community members and their contribution to our city. “The Legends Awards were presented to

groups or individuals helping build pride and capacity in the Salisbury community, achieving excellence in their chosen profession, trade or past time, actively supporting efforts to stimulate investment and attract new residents,

and generally raising community confidence,” Mayor Aldridge said. “They are people from all walks of life, who either live, work or play in the Salisbury area, and are forerunners in their chosen field or endeavour.”



Home Assist Volunteers, Mayor Gillian Aldridge, Simon Moran and Tim Murton on behalf of Kim McNamara

The Legends Awards program features:

- **LIVING LEGEND:** An individual or group improving quality of life in the City of Salisbury through learning and education, volunteering, environmental sustainability or community safety.
- **WORKING LEGEND:** An individual or group that is enhancing the City of Salisbury

by showcasing business excellence, or an individual or group improving the City of Salisbury through their business collaborations, events or innovation.

- **ACTIVE LEGEND:** An individual or a group that has helped build pride and success in the City of Salisbury as a sportsperson, team, coach, umpire, official, artist or musician.

Due to the high quality of nominations, Mayor Aldridge decided to present a Mayor’s Commendation on the night to Valmai Pavlovich in the Active Legend category for her many decades of volunteer service to the Pooraka Allstars Netball Club.

“Congratulations to all of this year’s winners, and keep an eye out for nomination forms in 2016.” Mayor Aldridge added.



Simon Moran

ACTIVE LEGEND:

Simon Moran, of Nuriootpa. As President, Mr Moran has turned the Salisbury Amateur Athletics Club into one of the most competitive and fastest growing in the State, with membership increasing by almost one third and members are being attracted from well beyond the Council boundary and even interstate. Mr Moran was integral in developing the popular Salisbury Runs Program and Carisbrooke Classic, and forged a strong relationship between Salisbury Amateur Athletics Club and local Little Athletics clubs to create recognised pathways for children to develop into senior athletes.

Mr Moran is one of the highest qualified athletics coaches in the State and nationally. He is the only person in SA and one of only seven across Australia qualified as an International Association of Athletics Federation Level 3 middle and long distance coach. He also provides coaching services to programs and squads run by Athletics SA, SA Little Athletics and the Sunraysia Academy of Sport.



Home Assist Volunteers

LIVING LEGEND:

Volunteers of the Home Assist Program. Volunteers in the Home Assist program provide an invaluable service to the Salisbury community.

They give their time and effort in supporting community members who are frail, aged and people with a disability to help them maximise their independence.

Home Assist volunteers provide more than just a service, they enhance the quality of life for many individuals within the Salisbury community who would otherwise not be able to remain independent within their own homes.



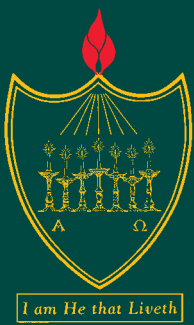
Tim Murton on behalf of Kim McNamara

WORKING LEGEND:

Kim McNamara, of KJM Contractors. This innovative company continues to expand its capabilities and value-add to its services wherever possible. KJM Contractors does everything from logistic support, engineering and remote site assistance for the mining, exploration and geothermal industries to food catering, food services, transport, hire, and any potable water, wastewater or industrial water treatment requirements. Mr McNamara’s company has a long history of investment and commitment to the City of Salisbury.

Over the past two decades the once small company has grown to employ more than 300 people across a diverse range of services, and KJM Contractors recently relocated from Salisbury South to a new \$18 million headquarters in Edinburgh Parks.

In 2013, Mr McNamara was named National Winner in the Services category at the Ernst & Young Entrepreneur of the Year Awards.



Temple Christian College

PARALOWIE CAMPUS | A Year 7-12+ School

Pursuing excellence for the glory of God

**LIMITED PLACES
AVAILABLE
IN YEARS 10, 11 & 12+
ENROL
NOW**



SPECIALIST FACILITIES:

Trade Training Centre, featuring:

- Commercial Kitchen for Food and Hospitality Studies
- Design and Technology Laboratory and Workshops for Electrotechnology and Advanced Manufacturing (CAD/CAM)

Creative Arts and Media Centre, featuring:

- Music Technology Suite, Recording Studio and Music Tuition Rooms
- Media/AV Suite for Photography, Film and Media Production
- Dance/Drama Studio
- Recital Room

Vocational Education and Training (VET) programs in Kitchen Operations and Commercial Cookery, Electrotechnology and Sound Technology.

Contact the school for subject information booklets or view on our website



DISCOVER THE EDUCATION WE CAN PROVIDE FOR YOUR CHILD IN A CARING AND NURTURING, CHRIST-CENTRED COMMUNITY ENVIRONMENT.

Enrolling your child with us gives them access to specialist subjects from Year 7

**Contact us to arrange a
school tour and interview**

Rod Klimionok – Campus Principal
Email: linda.hunter@templecc.sa.edu.au

17 Countess Street, PARALOWIE SA 5108 Ph: 8256 9600

A member of Adelaide Christian Schools – A ministry of Adelaide Christian Centre

www.templecc.sa.edu.au



NAIDOC WEEK EVENTS, JUDD STREET LANEWAY



Salisbury Youth Council members Sarah Bevan, David Charlett and Pau Lian Naulak.



Bodene and Lily.



Emma Casey and Josefina Frontczak.

PHOTOS: Courtesy Daybreak Photography

SALISBURY WRITERS' FESTIVAL LAUNCH, MAWSON CENTRE



Micky Wilson, of Mawson Lakes, and Margaret Visciglio, of Valley View.



John and Jeni Fenn, of Mawson Lakes, and Cate and John Harrowford, of Blair Athol.



Jane French, Margaret Russell, and Jenny and Nick Smart, of Port Willunga.

OPEN MINDS GENEROUS HEARTS EXHIBITION, JOHN HARVEY GALLERY



Thuy Nguyen, Ha Thi Nguyen, Daniel Connell and Hien Thi Vu.



Margaret and Nigel Clark.



Bishno Dahal, Ramesh Dahal, Yogesh Subedi, Puspa Bhuttarai and Riay Dahal (front).

YOUTH COUNCIL RAISING AWARENESS

THE importance of drug and alcohol awareness was highlighted at two well attended events recently, thanks to the efforts of Salisbury Youth Council.

The Salisbury Youth Council Drug & Alcohol Awareness Project Team in partnership with the UniSA Mawson Lakes campus promoted the drug and alcohol awareness message during an event held in October. This was attended by students from the University, Endeavour College and Mawson Lakes Primary School. A sausage sizzle was provided by Salisbury Rotaract with proceeds donated to the Australian Red Cross Save-a-Mate team.

Meanwhile, Salisbury's Civic Square hosted a similar event during the September school holidays. This featured giant games, stalls from local youth services, music from local young musicians and a sausage sizzle with proceeds donated to the Sammy D Foundation. Sammy D is an organisation whose vision is to provide leadership for the South Australian community to empower our youth with the skills to make safe and informed life choices.

Young people also had the opportunity to pledge to have a fatality free weekend by signing their pledge on an inflatable car.

Salisbury Youth Council is an opportunity for young people to make a difference in the community, to be involved in decision making and tell Council about issues that affect young people. It's made up of 18 young people aged 14 to 25 who represent different schools, community groups, agencies or clubs in Salisbury.

UPCOMING YOUTH ACTIVITIES

Open Mic Night

Friday 20 November 7pm to 10pm
FREE event for 16 to 25 year olds
Calling for performers and guests
@ Twelve25 Salisbury Youth Enterprise Centre, 17 Wiltshire Street Salisbury
Phone: 8406 8555

Cinema Night

Friday 18 December 6.30pm to 10pm
Christmas Theme
FREE event for 16 to 25 year olds
@ Twelve25 Salisbury Youth Enterprise Centre, 17 Wiltshire Street Salisbury
Phone: 8406 8555

YOUTH COUNCIL APPLICATIONS NOW OPEN

DO you want to have a say about issues affecting youth in Salisbury? Are you interested in working on exciting community projects and events? Do you want to learn leadership skills and make a difference in your community?

The City of Salisbury is looking for motivated young people to join the Youth Council team in 2016. Applications are now open to young people aged 14 to 25 who live, work, study or volunteer within the City of Salisbury.



For more information or an application form please contact Julie Brett on 8406 8370 or email jbrett@salisbury.sa.gov.au

LEARN TO SURF SAFELY

THE City of Salisbury through Twelve25 Salisbury Youth Enterprise Centre is again participating in On the Same Wave this summer, teaching beach and surf safety to young new arrivals.

The day is hosted by Surf Life Saving Australia at Henley Surf Life Saving Club and is a free school holiday activity on Wednesday 16 December for new arrivals aged 12 to 18 years.

There will be various activities including learning about the beach, the surf and the role of surf lifesavers, swimming, rescue and sun safety awareness. Entertainment will be provided including a live DJ and sporting activities.

Bus transport will be available from Twelve25 and lunch supplied. For more information or to express your interest please contact the Twelve25 Salisbury Youth Enterprise Centre on 8406 8555.

50 YEARS YOUNG

CAKE, candles, comedy and comradery made the Salisbury Senior Citizens Club's 50th anniversary celebration a day to remember.

Held on Wednesday 30 September, the celebration was attended by more than 100 members who enjoyed a three-course meal, door prizes and bingo.

Senior Citizens Club President Merry Vandekolk said the afternoon featured a very special ceremony. "You can't cut a cake 122 ways, so the kitchen staff made very special, individual cupcakes for everyone and we had a candle ceremony," Merry said. "One of our members – Theresa Forder – is very good at telling jokes and can make some very funny stories up and she provided some great entertainment. It was one of those days where everything went right."

The Salisbury Senior Citizens Club can cater for a maximum of 130 members – and it currently has 129 – which highlights its popularity. Anyone wanting to join can have their details placed on the waiting list. Membership is just \$5 per year and \$2 per week of attendance, which includes a free tea, coffee and biscuits. The Club meets on Wednesdays at 1pm.

"The hall is open from 9.30am in the morning, but we officially start at 1pm," said Merry. "A lot of the members play scrabble, cards, bingo, eightball, indoor bowls, or sit and talk. We sell raffle tickets, do birthdays, offer door prizes and bus trips, and we have a Christmas party at the Para Hills Community Club each year. We have a great group who all get along really well together."

Salisbury Senior Citizens Club is located at the Jack Young Centre, Orange Ave, Salisbury. The Jack Young Centre was the vision of Alderman Jack Young who wanted to create a place for the over 50's to socialise, take part in recreational activities and to gain valuable information relative to its members.

The Centre, which incorporated the old Senior Citizens Hall, was officially opened on 14 February 1986 by the Commissioner for Ageing, Adam Graycar, with the assistance of Alderman Jack Young and Mayor David Plumridge. At the time of its opening, Mayor Plumridge said, "Its location is ideally suited close to transport and provides facilities for people to continue enjoying social contact, which makes for a richer and invigorating lifestyle".



The Jack Young Centre now boasts a membership of more than 900 and enjoys a large volunteer base. A range of activities and information services are available offering a place where friendships are formed, people can socialise, enjoy leisure activities and outings.



For more information on the activities and services available at the Jack Young Centre phone 8406 8525.

WORDS Craig Treloar

CELEBRATING ST KILDA



THOUSANDS of people are expected to attend ‘St Kilda Celebrates – A Pirates’ Adventure’ – a huge community event dedicated to all that the St Kilda township has to offer.

The day will feature the much-anticipated grand opening of the \$3.5 million St Kilda Adventure Playground Renewal, live music, amusement rides, puppet making workshops, Old MacDonald’s Farm, face painters, balloon animal making, airbrush tattoos and much more.

Throughout the day there will be continuous rides from the Tram Museum, a come & try fishing event at Tackle & Tucker, buskers, Coast Guard and life jacket demonstrations at the Boat Club, boat viewings in the marina, as well as an appearance from SAPOL Water Operations Unit from 1pm to 3pm at the Boat Club.

Channel 9 personalities will be in attendance, and everyone is encouraged to participate in the Best Dressed Pirate competition.

Mayor Gillian Aldridge said the ‘Pirates’ Adventure’ should prove popular with the kids. “They can grab an adventure map on the day, which will take them on an expedition around the entire St Kilda precinct,” Mayor Aldridge said. “They must get their adventure map

stamped at each of the map locations and once completed, drop it off at the Boat Club by 3pm for a chance to win a prize!”

‘St Kilda Celebrates’ will be held on Sunday 22 November from 11am to 4pm and feature:

11am	Event Opening by Cosi ‘South Aussie with Cosi’
11.05am	Welcome to Country
11.15am	Mayor’s Speech
11.30am	Impro Kids performance
12.45pm	Trent Worley performance
1.00pm	Pirate Ship in the Channel
1.30pm	Best Dressed Competition (at the Boat Club)
1.45pm	Snaps Kakadu Club performance
2.30pm	Man Versus Tram
2.45pm	Kylie Brice Trio performance
3.45pm	Treasure Hunt Presentation
4pm	Event Close

FLOCKING TO FESTIVAL

BIRDS and visitors alike flocked to the Adelaide Flyway Festival on 17 October at the St Kilda Foreshore.



Lisien Loan, Sandy Pitcher, SA Environment and Conservation Minister Ian Hunter, Paul Sullivan, Dr Richard Fuller, Jason Irving, Salisbury Deputy Mayor Brad Vermeer, Arkellah Irving, Tony Fox and Murray Townsend

SO MUCH TO SEE AND DO

- 1 Australian Scholarships Group
- 2 Kite Flying
- 3 Ferret Racing
- 4 Sporting Clubs
- 5 Tram Stop
- 6 City of Salisbury Tent
- 7 St John's First Aid
- 8 Puppet Making Workshop
- 9 Main Stage
- 10 Channel 9 Tent
- 11 Old Macdonald's Farm
- 12 Pop Up Library
- 13 City of Salisbury Youth Council
- 14 Kids Activities
- 15 Amusement Rides
- 16 Go Kart Display
- 17 Classic & Custom Car Display
- 18 CFS
- 19 Biophyllic Cities
- 20 Bird Sanctuary
- 21 Marra Dreaming
- 22 Fishing Event

This event is being hosted by the City of Salisbury and supported by the St Kilda & Surrounds Development & Tourism Association, St Kilda Boat Club, Australian Electric Transport Museum, St Kilda Tackle & Tucker, St Kilda Progress Association, St Kilda Beach Hotel and the Lions Club of Salisbury.



The St Kilda wetlands are part of the new Adelaide International Bird Sanctuary, with the Flyway Festival celebrating the arrival of migratory shorebirds in conjunction with National Bird Week and the local community.

The Festival featured activities for young and old, expert bird watchers and newbies, cooking demonstrations by Callum Hann, kite making, Kaurana culture workshops and some great bird-watching competitions.

"It is fantastic that the environmental significance of St Kilda and surrounds is being recognised," said Mayor Gillian Aldridge. "St Kilda is already well known for its ecologically rich mangrove habitat, but the International Bird Sanctuary is creating a magnificent wildlife precinct that it is only a short drive from the heart of Adelaide. Visitors will get to see some amazing migratory shorebirds that fly as far as 25,000 kilometres from Australia to their Arctic

breeding grounds and back again." The migratory birds fly to St Kilda to feed and rest, and build up food reserves before their long flight back.

St Kilda is also home to dozens of species of resident birds such as the large flocks of Black Swans that feed on the algae. The Adelaide International Bird Sanctuary stretches along the coastline of the Gulf St Vincent between St Kilda and Port Parnham.

Enrolments for 2016



Paralowie R-12 School
ACHIEVEMENT FOR ALL

Paralowie R-12 School focuses on the whole child. We understand that student wellbeing and a positive school experience are the foundations on which we build good learning.

Innovative teaching, expectations of excellence, and enhancing student engagement in a caring environment are central to our school culture.

Ring for a tour today.

We invite parents of all prospective students to see the quality learning environment of our school. Book a tour with the Principal, Peter McKay, today.

Call **8182 7222** for an appointment.

Paralowie R-12 School
Whites Road, Paralowie SA 5108
www.paralowie.sa.edu.au



Government of South Australia
Department for Education and
Child Development



Leveda Inc is now trading as

LIGHTHOUSE DISABILITY

We have over 26 years' experience of providing support to people living with complex and diverse disabilities. As one of the State's larger disability organisations, our rebranding is part of a strategic plan as we head towards NDIS.

We support over 90 people in 28 homes in the north-eastern suburbs. Enquiries are encouraged from people and families seeking a service irrespective of the nature of the disability.

Every person is unique and is supported as such.

WE OFFER

- Ongoing 24-hour supported accommodation in suburban homes.
- Respite care for children and adults.
- Community support for people with disabilities living in their family home.

Over 200 skilled and dedicated staff deliver services tailored to the particular needs, hopes and dreams of people living with disabilities. Staff are our most important resource. If you would like to work with us, please make contact.

A growing team of nearly 100 volunteers bring a wide range of knowledge, skills and experience to add value to the lives of the people we support. We welcome your interest.

T 8256 9800 | lighthousedisability.org.au | 101 Park Tce Salisbury





Dave Walkington with Adelaide-based visual artist Daniel Connell

ARTIST DRAWS INSPIRATION FROM GENEROUS HEARTS

OUTSTANDING and invaluable community members were celebrated during the ‘Open Minds-Generous Hearts: Celebrating Local Inspirations’ art exhibition during Aged to Perfection month.

During October, Salisbury’s seniors centres ran a number of special events to acknowledge and celebrate the positive contributions that older people make to local community life. This year’s exhibition featured individual portraits and stories about 11 local people who make an extraordinary difference on a regular basis. Many of the people featured are City of Salisbury volunteers engaged in supporting older people to stay socially connected and involved in community life.

The individual portraits were drawn by Adelaide-based visual artist Daniel Connell. Daniel is well known internationally for his large scale portraits.

People featured this year included Concetta Zoccali, who has been a volunteer with the Salisbury Northern Italian Social Support Group for more than 15 years. Concetta is described as a wonderful team member and a great person to have around. Concetta has played an important role in developing this community social support group.

Bill Leslie is an invaluable volunteer with the Salisbury graffiti removal volunteer team. Bill performs many roles including being a mentor ‘buddy’ to new volunteers. He is also an invaluable volunteer at Salisbury’s Twelve25 Youth Enterprise Centre. Bill is described as very humble, a quiet achiever and a great asset to the community.

Dave Walkington commenced as a volunteer driver with Salisbury Home Assist in April 2014. He is one of a number of volunteer drivers helping people stay socially connected as well as undertaking shopping and getting to medical appointments. Dave is described as enthusiastic, dedicated, compassionate and caring and is very well liked by clients.

CULTURE AND COLOUR COME TO MAWSON LAKES

TRADITIONAL Japanese culture, art, music and dining took centre stage at the Matsuri on Mobara Festival in Mawson Lakes.

On Sunday 25 October, the Matsuri on Mobara Festival turned the Mobara Park gardens into a vibrant and colourful corner of Japan in celebration of the City of Salisbury’s Sister City of the same name.



“Thousands of people embraced Japanese culture by experiencing authentic cuisine, observing martial arts and Japanese swordsmanship demonstrations, and they enjoyed a full program of performances featuring traditional music and dance, which were quite interesting,” said Mayor Gillian Aldridge.

“A fun new addition this year was a vintage Japanese gaming room featuring early consoles such as a Famicom to the more recent Nintendo 64 console.”

“For those that have never been, Mobara Park is a beautiful centrepiece for Mawson Lakes featuring a traditional Japanese garden, sculptures and plants. The park comes alive once a year for the popular Matsuri on Mobara Festival.”

This year’s attendees learnt all about traditional Japanese tea ceremonies, calligraphy, origami and traditional dress.

WORDS Craig Treloar

STEP OUT THIS SUMMER AND EXPLORE SALISBURY

SUMMER in Salisbury is the perfect time to head outdoors, be active and explore some of the hidden treasures, natural beauty and fun activities available in the Living City.

“Whether you enjoy walking, cycling, jogging, swimming or sight-seeing – there is something for you in Salisbury,” said Mayor Gillian Aldridge. “Many people may not realise, but the City of Salisbury is home to more than 800 parks and reserves, 140 playgrounds, 50 wetlands and nine dog parks.”

Read more about some of Salisbury’s ideal summer spots below:

1 Dry Creek Linear Park Trail

A little-known nature corridor that runs along Dry Creek for 3.5km from Walkleys Road to Bridge Road. Nature trails wind through the Park and link with Founders Reserve and the Stockade Botanical Park. The Trail contains creeks and water features, native flora and fauna, and views of some of Salisbury’s most historic sites including a blacksmiths shop, old guard towers, stockmen’s quarters and pump house ruins.

2 Carisbrooke & Harry Bowey Reserves

These picturesque reserves are located just off Main North Road at Salisbury Park and are linked via walking trails with wheelchair access. The reserves have shaded barbecue and picnic areas and public toilets, playspaces, a cricket pitch, tennis courts and heaps of wide open spaces means you can play whatever games you like. Both are available for casual users or can be hired from Council.

3 Unity Park

This wide-open and recently developed public space on South Terrace, Pooraka has something for everyone; a superb street circuit of rails, ramps, boxes, slopes and quadrangles for BMX enthusiasts, a fitness station offering a great place to work out and test your endurance and a dog friendly park. The equal access playground facilities are for all ages, and you can take a relaxing walk around the wetlands.

4 Little Para River Trail

Pedestrians, cyclists and pets on leashes are all welcome to use the Trail, which is a 14km network that traverses hilly escarpments in the east, to Barker Inlet in the west. Trail users can experience diverse areas of remnant eucalyptus woodlands, grasslands, samphire, mangroves, and plenty of birds, mammals and reptile species. A number of historical homesteads still reside along the river’s corridor.

5 Greenfields Wetlands & Walking Trail

Self-guided tours are available at the Greenfields wetlands, 665 Salisbury Highway, Mawson Lakes, seven days a week during the Watershed Café’s opening hours. Just come down, push the gate open and enjoy the 2km walk along the trail and boardwalks. You may wish to stop at the bird hide to see if you can spot some of the 160 reported bird types that live at the wetlands.

6 St Kilda Adventure Playground

This popular free attraction has recently undergone a \$3.5 million renewal and offers visitors a giant Castle with slides, Pirate Ship on the foreshore, Volcano with a boardwalk and slides, bouncy boomerang, Submarine, maze, basketball court, disability swing, flying fox, electric barbecues and more.

7 St Kilda Mangrove Trail & Interpretive Centre

Learn all about this important habitat while engaging with nature outdoors. See how many of the 200 identified species you can spot, and enjoy the environmental learning experience offered at the Interpretive Centre.

8 St Kilda Boat Club & Marina

Are you a keen fisherman or sailor? St Kilda has an extensive marina with floating moorings for about 50 boats, two boat ramps and a sheltered channel out into the Barker Inlet, part of Gulf St Vincent. You can fish and crab from the foreshore.

9 Salisbury Swimming Centre

Located in the Salisbury Recreation Precinct, the Salisbury Swimming Centre features three pools; 25m, 50m and toddlers, a playground, barbecue facilities, shaded grass and a kiosk. The Centre is open from mid-October to April each year and is the ideal place to cool off during the hot summer months.

10 Cobbler Creek Recreation Park

Bike riders and walkers can access 17km of dual-use trails purpose-designed for mountain bikers and walkers. Two kilometres of the shared-use trails are suitable for novice bike riders and the remaining are classified as ‘intermediate’ for riders with a moderate level of skill and fitness. For walkers the remaining tracks are classified as moderate or hard hikes.



Want Local Customers?

Then advertise locally in **Salisbury Aware**.

With **55,000 copies distributed**, including every household within the City of Salisbury, you will not have a better and more cost-effective way of reaching more than **135,000 residents** in the local area than Salisbury Aware magazine.

For rates and publishing dates contact Walsh Media

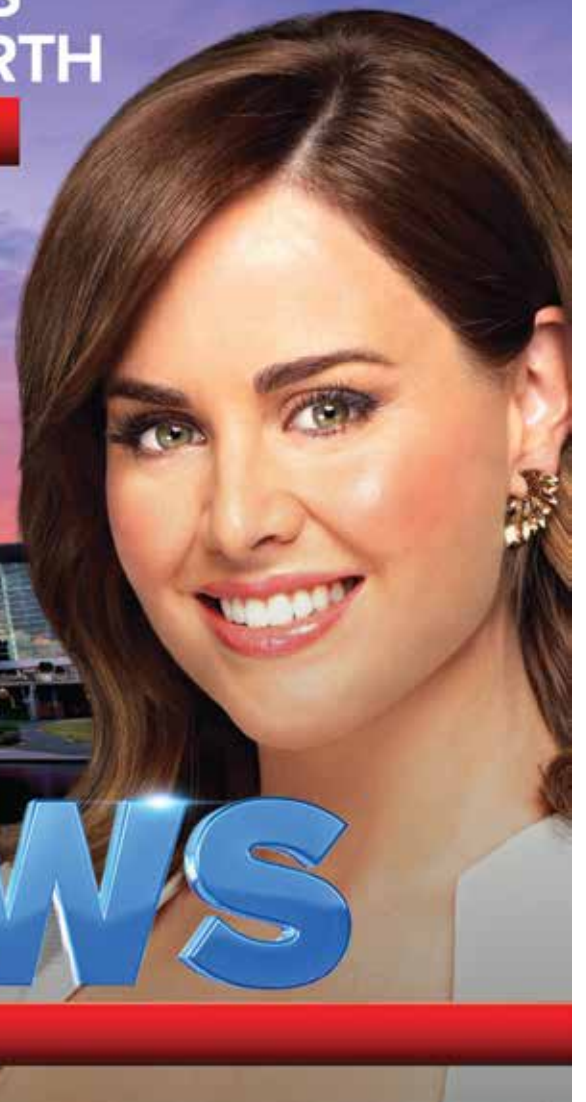
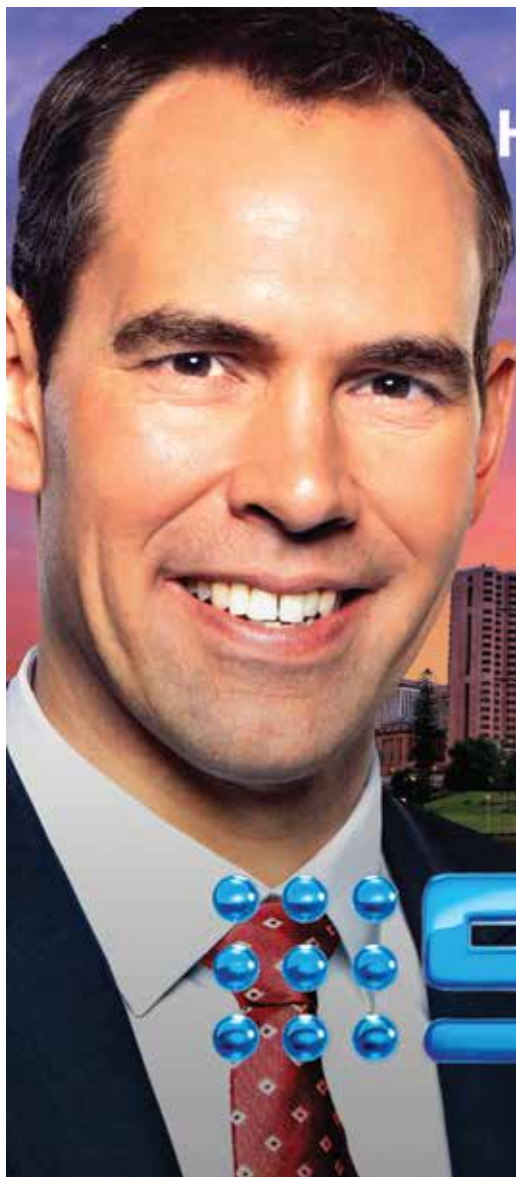
Telephone 8221 5600 or email admin@walshmedia.com.au



w a l s h M E D I A



BRINGING NEWS
HOME TO THE NORTH
NIGHTLY 6PM



9 NEWS

ADELAIDE

DAVID'S EYEING A WORLD TITLE

A world championship title and Olympic squad selection is on offer for local boxer David Biddle, after he captured a gold medal for Australia at the 2015 OCBC Oceania Confederation Boxing Championships in Canberra recently.

David, of Salisbury Park, was one of five Australians to win gold at the Oceania Championships which qualified him to compete at the AIBA World Boxing Championships in Doha from 5 to 15 October. Salisbury Aware went to print prior to the official results being known, but we wish David every success.



David Biddle

Just winning a place in the World Boxing Championships is a remarkable achievement, as the event features the top boxers in 10 weight categories from 73 countries. This year was also the first time that all boxers had to qualify for the world championships, which ensured only the best and in-form fighters progressed.

David, 27, is a light welter weight and competes in the 64kg category. He said reaching his goal of Australian representation was no easy feat. "It takes a lot of dedication," he said. "I train sometimes three hours a day, as well as work full time."

Locally, David competes for the Para Hills Amateur Boxing Club, who he says has changed his life for the better. "These people are like my family, they have seen me through some tough times and never ever gave up on me," David said. "Without them I don't know where I'd be right now. I started boxing when I was 14. I was involved with the wrong crowds, and smoking and getting into trouble at school. So my sister signed my permission form for me to start boxing."

David went on to achieve five State championships, two Australian championships, a silver Australian title and three Golden Gloves championships. He was a gold medallist at the Arafura and Oceania Games and fought at the last World Titles in Kazakhstan in 2013.

Looking ahead, David is continuing to aim high. "After the World Titles, I'm off to Queensland for the Australian Titles again," he said. "Winning at this event then gets me in for qualifying for the Rio Olympics in 2016."

Aside from the tough training and performance required to qualify for the World Titles, David said so much more goes into a successful competition. "I've had much support from sponsors to get me to these World Titles, and I'm particularly grateful to my employer, South Central Trucks Volvo for sponsoring me and giving me the time off when I need to go to these tournaments," he said. "Every trip is self-funded, and the World Titles is a total cost of \$5,000 to attend."

David wished to thank his major sponsors Nieuvision finance, Assured Home Loans, Physiozone, Boxing SA, Antz R Digging, Boss Security, Auswide Security, Viking Mechanical, Rocq Advertising and Concept Marketing and Infamous Ink.

CAPITAL INVESTMENT SUPPORTING SPORT

THE City of Salisbury recently completed two new million-dollar facilities, which will play a significant role in supporting local sporting clubs and growing participation levels for years to come.

Construction of the \$1.3 million Parafield Gardens Soccer Club is now complete and includes a new facility featuring four changerooms, a commercial kitchen, kiosk, bar and function area. Council also relocated solar panels from the original clubrooms and made some alterations to the existing car park.

The \$1.15 million Ingle Farm Junior Soccer Club is also complete and features two changerooms, a commercial kitchen, kiosk, bar, function area and storeroom. Council also relocated solar panels from the original clubrooms.

While the City of Salisbury makes 56 community buildings and 49 sports surfaces available to local sporting clubs, it is also important that sport continues to be affordable and accessible to people of all ages and backgrounds to support community togetherness, health and well-being, and to create opportunities for social participation and volunteering.

Mayor Gillian Aldridge said Council is very pleased to be able to provide two excellent new facilities that will help grow participation in sport and assist our local clubs to become more financially self-sufficient.

“The old clubrooms served our community well and I’m sure many people would have fond memories of their times there, but the clubrooms had become outdated, non-compliant and didn’t really meet the needs of today’s community,” Mayor Aldridge said. “We are very proud of these two projects. They are high quality clubrooms and I believe they will be very valuable and well utilised by the community.”

“Salisbury Council is strongly committed to supporting our local sporting clubs to grow and prosper. Some of the new key projects commencing this year include a \$3.6 million upgrade of Underdown Park and about \$1 million will be spent establishing new clubrooms for the North Pines Football Club,” Mayor Aldridge added.



Ingle Farm Soccer Club



Parafield Gardens Soccer Club

WORKING TOGETHER TO TACKLE PEST PLANTS

Every summer, the City of Salisbury carries out targeted inspections and treatment of Declared Plants (pest weeds).

Under the Natural Resources Management Act 2004, plants are ‘declared’ due to the significant weed threat they present to our State’s primary production industries, environment and public safety.

All landowners have a legal responsibility to control declared plants.

Council implements both programmed and reactive weed control services on Council

property. Council officers, in partnership with the Adelaide & Mount Lofty Ranges NRM Board, identify and inspect high risk properties not owned by Council within the City. Where Declared Plants are found, property owners are issued a Notice informing them of their obligations to control the plants along with supporting

REVITALISING THE SALISBURY CITY CENTRE

A multi-million dollar investment into the Salisbury City Centre is on the horizon as the City of Salisbury progresses plans for a regional community hub.

Mayor Gillian Aldridge said Council continues to work hard on finalising the community hub vision, which will create a sustainable and vibrant precinct for the future through revitalising the Salisbury City Centre.

“Council is currently reviewing all community, civic and administration facilities in the City Centre and it’s our intention to make a multi-million dollar investment into a new community hub,” Mayor Aldridge said. “The revitalisation of the City Centre and the new hub will help Council deliver improved civic and community services, consolidate existing facilities and land parcels, and attract more people to live, work and play in Salisbury.”

“We believe the hub has the potential to free up Council-owned sites within the City Centre for alternate development or uses and attract significant private and government investment. It is a high priority for Council and represents a significant commitment and investment into the Salisbury City Centre.”

The first consultation recently closed and focused on the Salisbury Oval Precinct, which Council has long recognised as providing significant benefits and value to the City Centre. “We believe it’s only



The upgrade of Civic Square is one of several completed projects in the ongoing Salisbury City Centre Renewal

natural to look at this precinct to see how its role in supporting the City Centre can be enhanced,” Mayor Aldridge said.

Council commenced the Salisbury City Centre Renewal in 2013 to create a sustainable and vibrant precinct for the future built upon strong service and retail provision, entertainment and recreation facilities, quality open spaces and pride building community events.

The revitalisation of the City Centre and the new hub will help Council deliver improved civic and community services, consolidate existing facilities and land parcels, and attract more people to live, work and play in Salisbury.

Key achievements to date include a \$700,000 upgrade of Civic Square, introduction of the annual Salisbury Secret Garden event, new wayfinding signage, and refurbishment of Judd Lane including a community table tennis table and seating.

information for assistance. It is not possible for Council officers to inspect all properties in the City and we need your assistance to help control these plants.

Have you got Declared Plants on Your Property?

Declared Plants are sometimes seasonal and are not visible all year round. Online resources provide helpful pictures and

methods to assist landowners identify and control Declared Plants, visit http://pir.sa.gov.au/biosecurity/weeds_and_pest_animals

Priorities for the Summer Period

There are two Declared Plants in particular that can be a significant nuisance in residential areas. Caltrop and Khaki Weed emerge after summer rains and quickly grow and flower to produce a spiny burr. Both are

prolific seeders and spread quickly, however with appropriate treatment can be contained and eliminated, particularly if discovered early.



Fact sheets on these plants are available at www.naturalresources.sa.gov.au/adelaidentloftyranges/plants-and-animals/pest-plants-and-animals/pest-plants

WORDS Craig Treloar | PHOTOGRAPH Blue Razoo

SETTLING WELL INTO SALISBURY

THE City of Salisbury's multicultural community, diverse range of services and housing opportunities are proving popular with new Australian citizens.

By the end of 2015, the City of Salisbury will have held 14 Citizenship Ceremonies for the calendar year, up from the traditional four. The most common countries of birth for new citizens were India, Bhutan and the Philippines. Between mid-2007 and

mid-2012 the City of Salisbury resettled the largest intake of new arrivals of any South Australian council.

"Our city is a highly sought-after location for new Australians thanks to our affordable living and the quality and availability of culturally-focused services and programs," said Mayor Gillian Aldridge. "One of my favourite duties as Mayor is welcoming new Australians during our Citizenship Ceremonies. This is the final step in the journey to becoming an Australian citizen and it is always an incredible experience getting to meet, speak to and share in this sometimes emotional and often inspiring occasion."

"The City of Salisbury is a diverse

community with more than 30% of our population born overseas," Mayor Aldridge said. "So whether we are Australians by birth or by pledge, we are all united through our citizenship and look forward to building a bright future together."

Originally from the Democratic Republic of Congo and arriving in Australia on 18 October 2007, Simon Mpenda and his family received their Australian Citizenship during a ceremony last month. "For the last eight years before I came to Australia I had lived in the Republic of Zambia as a refugee," Mr Mpenda said. "Like any other refugee I couldn't make any decision on the choice of the country where to go to. That's a decision from the United Nations for High Commission of Refugees in conjunction with the country. It's therefore at random myself and my family are in Australia."

Mr Mpenda said transitioning into the Salisbury community was never a problem. "We very quickly and easily integrated," he said. "I started working as an interpreter/ translator since early 2008 in order to help migrants from different communities. Currently I work as a Community Support Worker within the Department of Community and Social Inclusion."

Mr Mpenda said his six children all attend school locally. Two are at University, two at college, one at high school and one at primary school. "My two boys are enjoying playing soccer," he said. "My family members like the peace that is prevailing in Adelaide and the different opportunities that are available for them to develop."



Welcome new citizens Simon Mpenda, Mary Kasangu, Antoinette Mpenda, Cecile Mpenda, Pauline Kalunga and Edoxie Mpenda, 15.

AN INSPIRATION AT ANY AGE

Like many people his age, 72-year-old Tom Bunworth has been through the difficult process of redundancy and having to apply for multiple jobs, only to be told he was over qualified, or worse, being offered positions that were physically impractical.

Tom worked for more than 20 years as a power station operator and unit controller; a highly skilled and technical position. After being made redundant, he found employment in the electrical field working on Test and Tag systems until it became physically too hard to continue. During his search for what to do next, he found that many of his peers were also in the same position. Some wanted a way to keep their mind active, some wanted to be able to continue to contribute their community, and some just wanted to maintain a social connection to other people.

Seeing so much knowledge and talent going to waste, Tom teamed up with a friend and former business manager to create easytest. Their first product was their own patented Test and Tag equipment, which is produced locally. From there, he moved into teaching how to use the equipment to test and tag electrical devices.

At first the lessons were taught one-on-one, face-to-face. The problem with this model became clear very quickly, as no two lessons were the same and to repeat the lessons was time consuming and inconvenient for students. It restricted who he could do business with, when there was a large pool of potential students interstate. The answer was of course to go digital.

Having rarely used a computer before starting easytest, Tom taught himself the basics and from there created his own digital training course and website to provide the course to the public.

“
Most successful people have ideas,
but don't necessarily have all of the
skills to do work themselves. You
don't have to know everything.
”

Speaking about the challenges he faced in starting up and growing his business, Tom counts marketing as his biggest challenge. He attended a digital marketing workshop at the Polaris Business and Innovation Centre, which helped him to understand the enormity of the field and that whilst it was vital for his business, it was an area that held little interest to him personally.

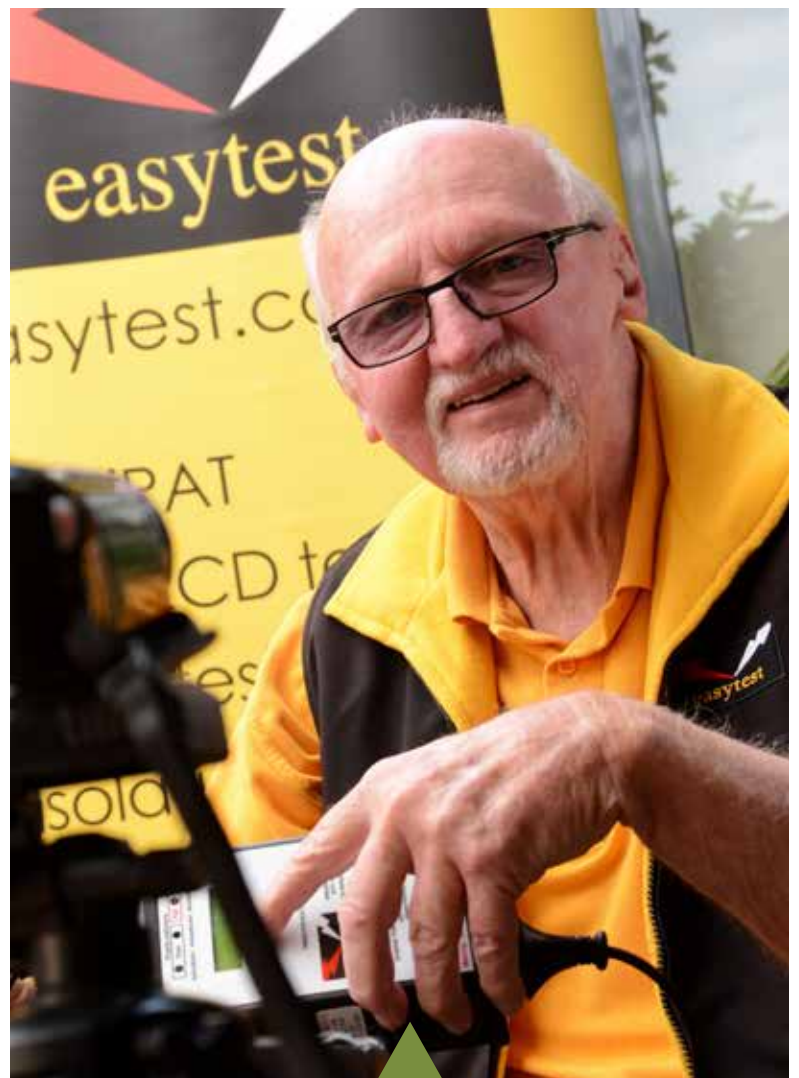
Tom's advice, "make money at what you are good at and let others do the rest"; and that's exactly what he did. Outsourcing his web maintenance, SEO and other digital endeavors and getting on with what he enjoyed doing.

"Most successful people have ideas, but don't necessarily have all of the skills to do work themselves," he said. "You don't have to know everything; you just need tenacity and imagination".

Imagination is exactly what Tom has in spades. Rather than follow the well-worn path of other providers of online training, he has set up a unique experience for his students. Participants receive access to the course material to work through in their own time, as many times as they wish. When they feel ready they set up a Skype (free online video chat software) meeting where the student sits a practical exam so that Tom, a registered trainer, can provide official certification that is valid throughout Australia.



You can find out more about Tom and easytest at www.easytest.com.au. The Polaris Centre offers free and low cost business training for businesses of any size. View their range of courses, workshops and the business mentoring offered via their website www.polariscentre.com.au.



Tom Bunworth

CITY PLAN 2030

THANKS FOR YOUR VIEWS!

THE City of Salisbury invited you to tell us your ideas to inform the development of our new City Plan – and the response was fantastic!

Council received more than 1,000 submissions telling us your views on what we need to make our community a better place to live, work and play; what our next generation needs; and how Council can improve our services to you.

The City Plan 2030 will define the community's vision for the City of Salisbury's future and outline what services Council will provide to you. So thank you for your input into this important plan.

Some of the emerging themes and issues important to you include:

- More jobs, supporting existing business and increased investment,
- Preservation of the natural environment and open spaces, waste and resource management,
- Importance of attractive, functional and interesting public spaces, improved transport and urban quality; and
- More engagement opportunities, leadership and responding to the changing community needs.

As we work towards delivering the new City Plan 2030 by March 2016, to keep you informed Council will post updates on the development of the Plan to our website and Facebook page over the coming months. So please keep an eye out for these updates, or if you have any questions email us at cityplan2030@salisbury.sa.gov.au to get in touch.



Andrew Williams - City Plan Photo Competition winner Favourite Places



David McMillan City Plan Photo Competition winner Favourite Faces

ADAPTING NORTHERN ADELAIDE



Adapting to extreme climates and changing weather is nothing new in South Australia, but it's important we make sure we're planning for the future now.

Adapting Northern Adelaide – Climate Change Adaption Plan for the Northern Adelaide Region is a joint initiative between the cities of Salisbury, Playford and the South Australian Government.

This plan will build on the region's strength and experience to plan for continued changes in risk areas, such as extreme heat and bushfires, extreme rainfall events and rising sea level. It will also look at opportunities to grow our green industries in key strength

areas such as sustainable water management, horticulture, renewable energy, energy efficiency, research and innovation.

A key part of this project is engaging with industry, businesses and the community. Community members will be able to share their views and experiences about the changes they're seeing in their local area as part of the 'Adapt your Patch' engagement phase in December. Visit playford.sa.gov.au/AdaptingNorthernAdelaide for more details.

FOOD PARK HEADING TO PARAFIELD

The establishment of a 40-hectare Food Park in the Parafield Airport precinct is fantastic news for Salisbury and northern Adelaide, according to Mayor Gillian Aldridge.

The Food Park was announced by Premier Jay Weatherill, Minister for Agriculture, Food and Fisheries Leon Bignell and Mayor Aldridge on Sunday 18 October.

Mayor Aldridge said the Food Park is expected to provide expansion opportunities for new and existing businesses and help accelerate the distribution of food to local, national and international markets. "We welcome the State Government's commitment of \$2 million over the next two years to plan the Food Park, which will allow the co-location of food manufacturers, food packaging specialists, cold-chain suppliers, logistics and transport companies, and other related service providers," Mayor Aldridge said.

The state-of-the-art development will enable food manufacturers, packaging specialists, suppliers and transport companies to expand and grow, and tackle the challenges of increasing costs of operation.

The Food Park is a key initiative of the Northern Adelaide Economic Plan, which is being developed by the State Government in partnership with local councils, industry, business and the community to support economic growth and create jobs in the area.

The Food Park announcement closely followed the Pooraka-based Adelaide Produce Market's decision to hold an expression of interest for their new fresh food precinct.

The Markets say this new precinct will cater for up to 70,000 square metres of food processing, export consolidation, warehousing and cold storage facilities and house up to 50 additional businesses (on top of the 100 already on the site).

"The City of Salisbury truly is the food hub of South Australia delivering clean and green produce and premium food products to the world," Mayor Aldridge said. "We are the ideal location for food businesses and enjoy access to major food distribution centres whether that be via road, rail or air."



For more information go to www.pir.sa.gov.au/foodpark



ANGLICARESA FosterCare
Join the Family.

Foster Carers can be from all kinds of family types: singles, couples, people at home, working full-time, part-time or studying. Free training and ongoing professional support (inc 24hr assistance) is provided.

You are invited to attend one of our information sessions:

- > Wednesday 25 November, Fullarton Park Community Centre
411 Fullarton Road, Fullarton SA
6.30 to 8.30pm
- > Tuesday 8 December, Woodcroft-Morphett Vale Neighbourhood Centre
175 Baines Road, Morphett Vale SA
6.30 to 8.30pm

To register, or for more information, call Linda on 8131 3456
www.anglicaresa.com.au/fostercare



Headache? Joint pain?
Sports injury? We can help.

northcare
physio

you're in good hands

Physiotherapy • Massage therapy • Hydrotherapy
Gym rehabilitation • Pilates

Salisbury Plain
192 Park Terrace
8250 7557

Salisbury Downs
287 Salisbury Highway
8258 1949

northcare.com.au



Salisbury High School



Pathways to Success

SALISBURY HIGH SCHOOL

14 Farley Grove, Salisbury North SA 5108
Telephone: 8182 0200 Facsimile: 8182 0201
www.salisburyhigh.sa.edu.au
Email: info@schools.sa.edu.au

Limited vacancies for University Pathway students Enrol now for Year 11 2016



Please phone for an appointment as soon as possible

Exemplary Year 12 results 100% SACE completion
7 Year 12 Merit Awards 62 A grade results
High ATARs achieved with students gaining entry into
courses, eg Pharmacy and double degree Engineering.
National academic award achieved by 2014 DUX.



Government of South Australia
Department for Education and
Child Development

Early detection is your best protection

Women aged 40 to 74 are eligible
for a free screening mammogram
with BreastScreen SA. Screening
mammograms (breast X-rays) are the
only clinically proven way to detect
breast cancer early, before symptoms
start to show. This gives you the best
chance of successful treatment, so
why not do something for yourself
and make an appointment?

Our Elizabeth Clinic is located on
Level 1 in the Elizabeth GP Plus
Health Care Centre.

See what you can't feel.
Call 13 20 50 and book your
appointment today.



Government
of South Australia
SA Health

Turning Point dance

Whether you seek high quality
tuition with career options or
simply an outlet for fun and
extra confidence for your
child, Turning Point Dance
is a school of integrity and
standing. A great choice in
dance education.



Fairies Galore & More
18 months - 21/2 years
Kinderballet 21/2 years
Classical Ballet RAD & ACB
Jazz & Tap CSTD
Contemporary
Tumbling & Pilates SACE
Dance Stages 1 & 2 Adult
Classes

Mobile: 0413 113 950

Phone: 8346 9260

Email: enquiries@tpdance.com.au

Web: www.tpdance.com.au

St Jays Recreation Centre - 15 Brown Tc, Salisbury



Conditions are always perfect for hosting your event at Parafield Airport.

Not only can the Community Centre at
Parafield Airport host up to 50 people,
you can rent it for free. How's that for the
perfect function venue!

For reservations call 8307 5700, or find
out more at www.parafieldairport.com.au



CAPITAL WORKS



Ongoing maintenance - Maintenance will occur around the city as part of an ongoing program. This includes such programs as kerb and gutter reinstatement due to tree damage and footpath reinstatement. For more information please contact Council's Customer Centre on 8406 8222.

Reserve Upgrade Program

Broadstock Green

Following the renewal of irrigation at Broadstock Green Reserve on Normandy Avenue in Para Hills, an upgrade will occur including new paths and trees.



Strowan Park

Strowan Park on Halbury Road in Salisbury is scheduled to be upgraded with the installation of a new shelter, picnic table, irrigated turf play area and a nature play area.



Playspace/Playground Renewal Program

Cokers Reserve

To complement the new picnic shelter and newly upgraded sports court at Cokers Reserve in Brahma Lodge, the play space is scheduled to be renewed. This work will be a combination of refurbishing some existing elements plus the addition of some new exciting elements. The play space will be modified to be co-located adjacent Southdown Terrace.



Golding Oval

With the new bicycle track and sports surface in play at Golding Oval in Para Vista, the play space will be revitalised. New play elements will be installed and co-located adjacent the new court.



Madison Park

The neighbourhood reserve, Madison Park on Barbara Street in Salisbury East will undergo a renewal of its play space. This will be a combination of restoring some existing play elements and the installation of some new play equipment items.



WHAT YOU TOLD US ON SOCIAL MEDIA

The City of Salisbury engages with residents via Facebook and Twitter and appreciates all feedback received.



facebook.com/cityofsalisbury

I for one say good on Salisbury council for doing this! St Kilda has needed an upgrade for a long long time and we can't wait til it's all complete so we can show our girls one of the best playgrounds in Adelaide. Thank you for the memories (which included injuries!) And thank you for the opportunity to continue making them with my own children!

Emma Roberts

We went with 6 grandkids aged 4 to 9, although parts were still closed it was a terrific day and all the kids had a ball. I love St Kilda playground, thanks Salisbury Council

Lesley-Ann Cannon

Great new SA Metropolitan Fire Service Adelaide facility opened at the Salisbury Emergency Services Precinct. The SES will join them soon. The facility will provide greater community safety in the northern parts of Adelaide. New facility great for the community and has enhanced OH@S features for our firefighters.

Tony Piccolo, MP

Greenfields Wetlands; Absolutely Brilliant forward thinking Engineering! Save Our Water, working With Nature, Not Against Her!!!

Gary Southwell

Was at the Carisbrooke Classic this morning , awesome event , well done to the City of Salisbury and the organisers.

Brian Gillies

follow us on
twitter



twitter.com/cityofsalisbury

Cylindrical_File @CylindricalF Jul 8 @CityOfSalisbury just spoke to your office. Thanks for a speedy solution.

Virginia Langeberg @VLangeberg9 Sep 22 - The view from the top of the volcano at St Kilda Adventure Playground. | @9NewsAdel @CityOfSalisbury



Matthew Wright-Simon @ecocreative Jul 27 - Looking for a great family #birdwatching spot? Try @CityOfSalisbury's Kurna Park Wetlands. <http://www.weekendnotes.com/birdwatching-at-kurna-park-wetlands/>



Arcade Alchemy @arcade_alchemy Aug 11 - @CityOfSalisbury Just saw our 4th #salafestival exhibition. Beautiful artworks. Worth a look.

Wakefield Press @WakefieldPress Aug 22 - @CityOfSalisbury great festival as ever. Thanks!

Uni of Adelaide @UniofAdelaide Aug 24 - Young writers group, supported by us & @CityOfSalisbury, created an anthology! Visit @DymocksAdelaide. Video: <http://ow.ly/RgyoF^AF>

CELEBRATE CHRISTMAS IN SALISBURY

Salisbury City Centre's spectacular annual Christmas Parade will wind its way along the city streets on Saturday 21 November commencing at 10.30am.

Now in its 24th year, this popular Christmas event run by the Salisbury City Centre Business Association attracts thousands of people to John Street to see more than 70 festive and colourful floats led by local community and sporting groups. Father Christmas will be at this year's parade as he makes an early stop in Salisbury before heading back to the North pole with his reindeer.

Activities will begin from 9am in Civic Square and include face painting, children's activities, side show rides, clowns and much more!

Following the Parade, head down to Jack Young Centre's craft fair for continued celebrations over the weekend. With more than 15 stalls, the fair will provide you with the opportunity to 'shop 'til you drop', allowing you to pick up some wonderful Christmas presents at great prices. The craft fair will feature a host of items including jewellery, candles, cards and woodwork. Whether you're on the hunt for stocking fillers or need something to go under the Christmas tree, there will be something for everyone.

Mark this day in your calendar for a full day of Christmas fun for all the family.





ST KILDA CELEBRATES! A PIRATES' ADVENTURE FAMILY FUN DAY

Sunday 22 November 11am - 4pm: Come and celebrate the unveiling of the playground upgrade and all that St Kilda Township has to offer. With live music, buskers, amusement rides, pop up library, face painters, airbrush tattoos, balloon animals and a treasure hunt, what more fun could you have! With plenty of food and drink and appearances from Andrew 'Cosi' Costello and Channel 9 personalities, this event is great for a family day out.

Asbestos Victims Memorials

Friday 27 November

Ceremony held at Pitman Park.

Contact 8406 8649 for more information.

Credit Union Christmas Pageant

14 November

School Holidays

14 Dec – 29 Jan

Events and activities for kids aged two to 18 years at our community and recreation centres. Visit www.salisbury.sa.gov.au for a copy of the school holiday brochure.

Christmas Day

Friday 25 December

Merry Christmas from the City of Salisbury!

Boxing Day

Saturday 26 December

Proclamation Day

Monday 28 December Public Holiday

New Year's Eve

Thursday 31 December

The City of Salisbury wishes you a very happy and safe New Year!

New Year's Day

Friday 1 January Public Holiday

Tour Down Under

16-24 January

Australia Day

26 January

The City of Salisbury's Australia Day Citizen, Young Citizen, Senior and Community Event of the Year awards will be announced during 'The Club' Australia Day Family Picnic at Carisbrooke Park.

Term 1 Starts

1 February

Lunar New Year

8 February

Valentine's Day

14 February

Library Lover's Day

14 February

Adelaide Fringe

12 Feb – 14 March

Salisbury Secret Garden Fringe Festival

18-28 February

Held over 11 days at eight venues throughout the Salisbury City Centre, all within a five minute walk. You can also stay up-to-date by 'Liking' us on Facebook at: www.facebook.com/salisburysecretgarden

Adelaide Festival

26 Feb – 14 March

Clipsal 500

3-6 March

International Book Day

3 March

Clean up Australia Day

6 March

Community clean up events at parks and reserves around Salisbury

International Women's Day

8 March

WOMADelaide

11-14 March

Adelaide Cup

14 March Public Holiday

St Patrick's Day

17 March

Harmony Day

21 March



Good Friday

25 March

Easter Saturday

26 March

Easter Sunday

27 March

Easter Monday

28 March

Earth Hour

26 March

Turns lights out for one hour at 8.30pm

For more information about these events visit www.salisbury.sa.gov.au To include your event in the What's On please register your event at salisburyaware@salisbury.sa.gov.au

Salisbury Living

FINAL LOTS LEFT!

THE RESERVE AT SALISBURY NORTH



- Allotments ranging from 10m wide to 26m wide
- Fantastic house and land packages from Adelaide's leading builders, or choose your own builder
- \$12,000* HAF Grant on selected lots and \$15,000* First Home Owner Grant are available to eligible applicants
- Excellent accessibility to walking trails, schools, childcare, shopping, and transport hubs

For more info go to
www.thereservesalisburynorth.com.au



*Subject to change, please check criteria and availability

RIVERWALK AT PARAFIELD GARDENS



- Adjacent to Little Para River and Little Para Linear Park
- Close to schools, shopping and coffee shops
- Commence building immediately
- \$10,000* HAF Grant on selected lots and \$15,000* First Home Owner Grant are available to eligible applicants
- Come and have a stomp onsite; Alex will be happy to show you around

For more info go to
www.theriverwalk.com.au



*Subject to change, please check criteria and availability