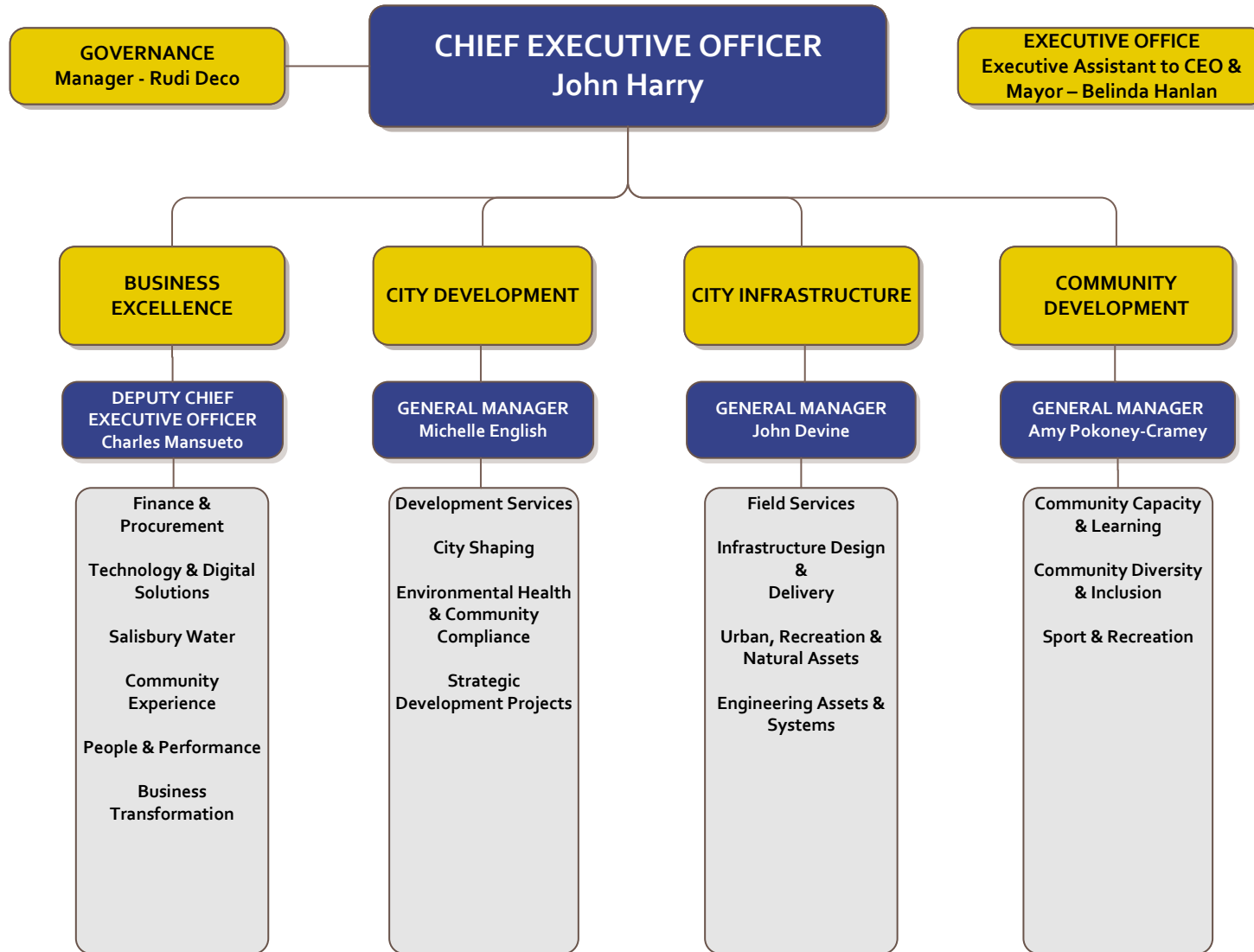




ORGANISATION STRUCTURE





**BUSINESS EXCELLENCE
DEPARTMENT**

**DEPUTY CHIEF EXECUTIVE
OFFICER**
Charles Mansueto

**BUSINESS
TRANSFORMATION**

MANAGER
Jayne Emerson

Business Transformation

**COMMUNITY
EXPERIENCE**

MANAGER
Chelsea Kroepsch

Corporate Communications
Community Marketing
Media Relations & Communications
Community Engagement
Publications

**FINANCE &
PROCUREMENT**

MANAGER
Kate George

Rates
Policy & Collections
Budget & Management
Accounting
Grants & Subsidy
Management
Treasury
Asset & Project Accounting
Financial Accounting & Reporting
Debtors
Accounts Payable
Tendering & Contract Management
Contract & Procurement Policies
Purchasing Practices & Policy Delegations

**PEOPLE &
PERFORMANCE**

MANAGER
Kia Logan

Human Resource Services
Employment & Industrial Relations
Learning & Development
Safety & Wellbeing
Organisational Development
Payroll

SALISBURY WATER

MANAGER
Bruce Naumann

Salisbury Water Business Unit

**TECHNOLOGY &
DIGITAL SOLUTIONS**

MANAGER
Acting - Michelle Collins

Cybersecurity
Network Infrastructure
Application Implementation, Management & Support
Service Desk
Business Analysis
IT Hardware Management & Support
Printing Services
Audio Visual Equipment
Telephony



**CITY DEVELOPMENT
DEPARTMENT**

**GENERAL MANAGER
Michelle English**

**PERSONAL & ADMIN
SUPPORT**
PA to GM - Michelle Whibley

CITY SHAPING

MANAGER
Leandro Lopez Digon

- Economic Development
- Business Advice and Events
- Investment Attraction
- City Plan
- Development Plan Amendments
- Economic and Urban Policy
- Green Industries
- Business Engagement (incl. international)
- Climate Change Adaptation
- Strategic Master Planning

**DEVELOPMENT
SERVICES**

MANAGER
Chris Zafiroopoulos

- Development Plan Assessment
- Building Rules Assessment
- Corporate Signs
- Heritage Assessment
- Dev't Inspections & Compliance
- Assessment of Land Division Proposals
- Dev't Engineering Coordination
- Admin & Support Services
- Private Certification Services

**ENVIRONMENTAL
HEALTH &
COMMUNITY
COMPLIANCE**

MANAGER
John Darzanos

- Public & Environmental Health
- Food Safety
- Inspectorate
- Dog & Cat Management
- Local Government By-Law Enforcement
- Parking Control

**STRATEGIC
DEVELOPMENT
PROJECTS**

MANAGER
Sharee Klein

- Strategic Property Development Projects
- Development Projects Feasibility
- Property Services



CITY INFRASTRUCTURE DEPARTMENT

GENERAL MANAGER
John Devine

PERSONAL & ADMIN SUPPORT
PA to GM & Team Leader
City Infrastructure Administration-
Heather Prasad

FIELD SERVICES

MANAGER
Mark Purdie

Road, Drainage, Footpath, Verge & Civil Maintenance
Litter Collection & Graffiti Removal
Signage & Line Marking
Sportsgrounds, Turf and Irrigation Maintenance
Playground, Reserve, Open Space, Wetlands & Biodiversity Maintenance
Feature Landscape & City Centre Maintenance
Pest & Weed Control
Ornamental Lakes Maintenance
Tree Planting & Maintenance
Cemetery Maintenance
Security
Workshop, Fleet & Stores
Building Maintenance
Operational Contract Management

INFRASTRUCTURE DESIGN & DELIVERY

MANAGER
Jarred Collins

Civil Design (Roads, Traffic, Drainage, Building & Recreation)
Road Reseal Contract Delivery
Building Project Delivery
Recreation Project Delivery
Capital Works Program
Capital Works Contract Management

URBAN, RECREATION & NATURAL ASSETS

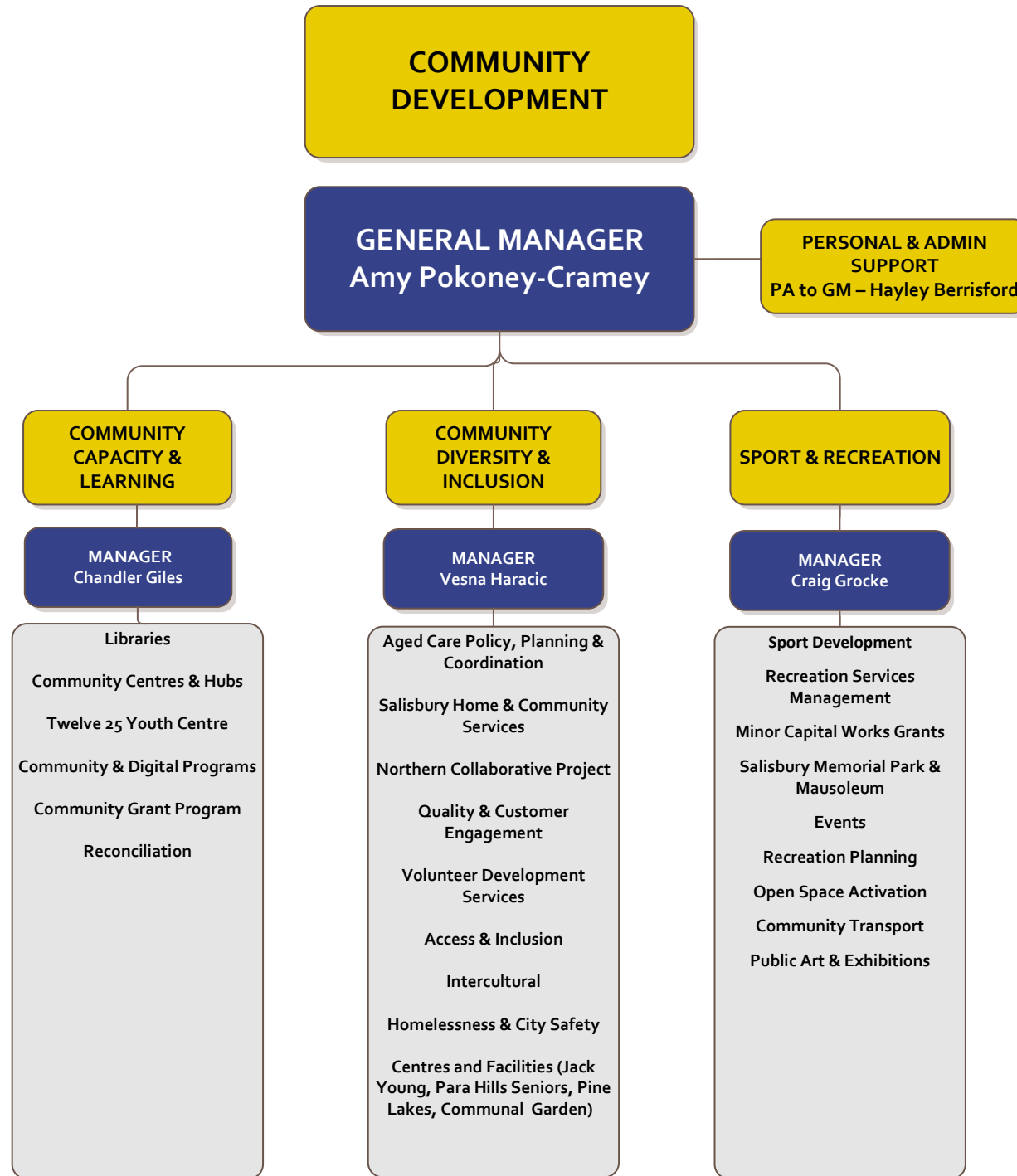
MANAGER
Jon Foong

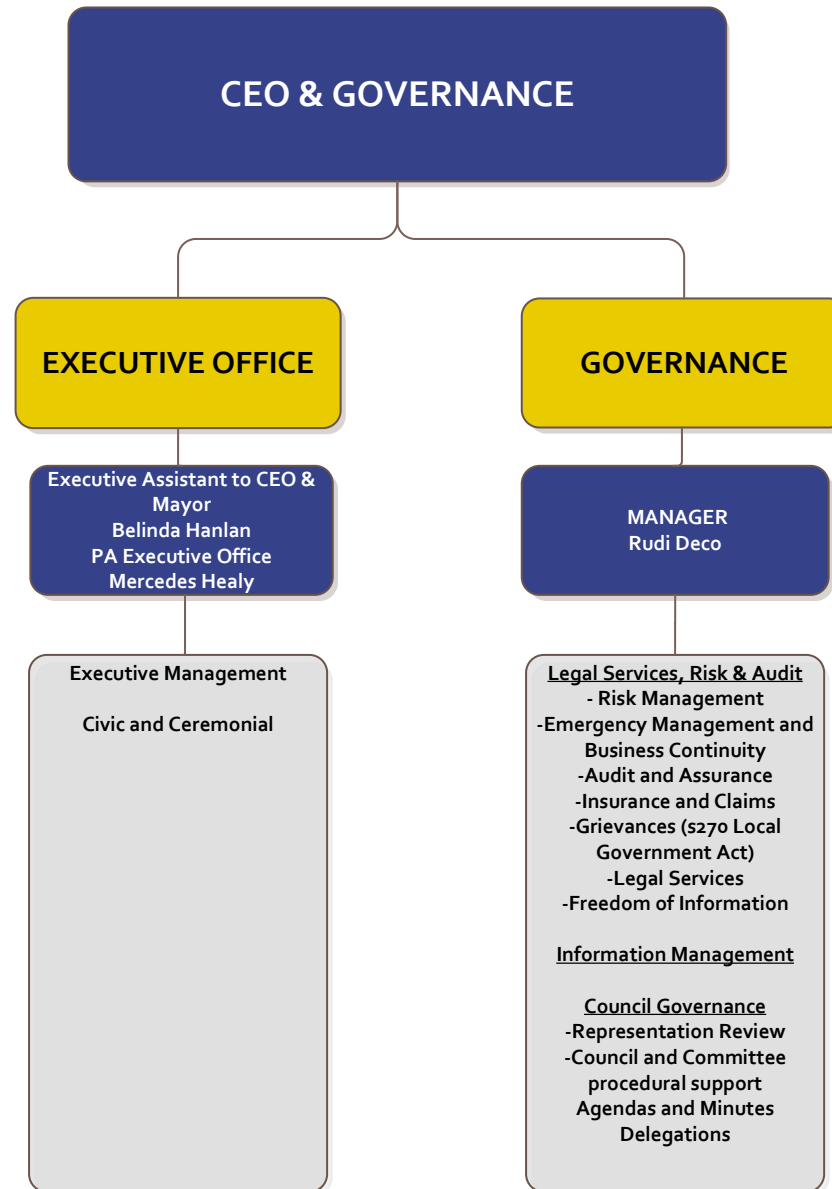
Capital Works Program Development
Asset Management Planning (Open Space, Recreation, Building & Natural Assets)
Street Tree Program Management
Footpath and Pathway Programs
Biodiversity & Environmental Management Programs
Waste Contract Management
Facilities Management
Community and Sports Club Leases

ENGINEERING ASSETS & SYSTEMS

MANAGER
Chris Haskas

Strategic Asset Management
Capital Works Program Development
Asset Management Planning (Transport & Civil Engineering Assets)
Infrastructure Planning/ Strategies
Civil Structures
Water Bodies, Drainage & Stormwater Management & Planning
Coastal Structures
Asset Data Management, Analysis & Reporting







Executive Assistant to CEO & Mayor –
Belinda Hanlan
PA Executive Office – Mercedes Healy



CHIEF EXECUTIVE OFFICER
John Harry



GOVERNANCE
Manager: Rudi Deco



BUSINESS EXCELLENCE
Deputy Chief Executive
Officer
Charles Mansueto



CITY DEVELOPMENT
General Manager
Michelle English



CITY INFRASTRUCTURE
General Manager
John Devine



COMMUNITY DEVELOPMENT
General Manager
Amy Pokoney-Cramey



BUSINESS TRANSFORMATION
Director: Jayne Emerson



PERSONAL & ADMIN SUPPORT
PA to GM - Michelle Whibley



PERSONAL & ADMIN SUPPORT
PA to GM & Team Leader City
Infrastructure Administration-
Heather Prasad



PERSONAL & ADMIN SUPPORT
PA to GM – Hayley Berrisford



COMMUNITY EXPERIENCE
Manager: Chelsea Kroepsch



CITY SHAPING
Manager:
Leandro Lopez Digon



FIELD SERVICES
Manager: Mark Purdie



COMMUNITY CAPACITY & LEARNING
Manager: Chandler Giles



FINANCE & PROCUREMENT
Manager: Kate George



DEVELOPMENT SERVICES
Manager: Chris Zafiroopoulos



INFRASTRUCTURE DESIGN & DELIVERY
Manager: Jarred Collins



COMMUNITY DIVERSITY & INCLUSION
Manager: Vesna Haracic



PEOPLE & PERFORMANCE
Manager: Kia Logan



ENVIRONMENTAL HEALTH & COMMUNITY COMPLIANCE
Manager: John Darzanos



URBAN, RECREATION & NATURAL ASSETS
Manager: Jonathan Foong



SPORT & RECREATION
Manager: Craig Grocke



SALISBURY WATER
Manager: Bruce Naumann



STRATEGIC DEVELOPMENT PROJECTS
Manager: Sharee Klein



ENGINEERING ASSETS & SYSTEMS
Manager: Chris Haskas



TECHNOLOGY & DIGITAL SOLUTIONS
Acting Manager: Michelle Collins