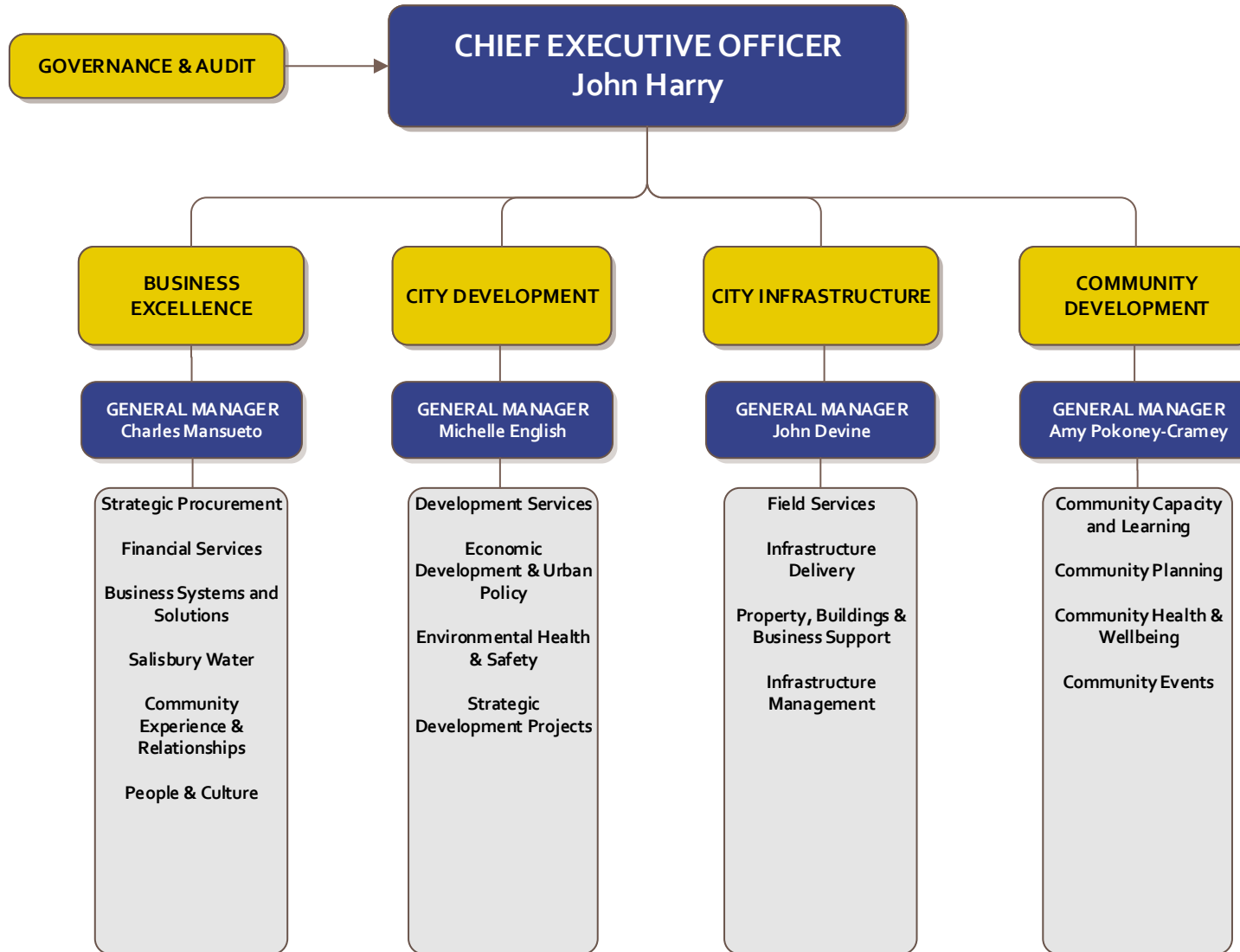




# ORGANISATION STRUCTURE





# BUSINESS EXCELLENCE DEPARTMENT

**GENERAL MANAGER**  
Charles Mansueto

PERSONAL & ADMIN  
SUPPORT

## BUSINESS TRANSFORMATION

**DIRECTOR**  
Jayne Emerson

Business Transformation

## PEOPLE & CULTURE

**MANAGER**  
Stephanie Millard

Human Resource Services  
Employment & Industrial Relations  
Learning & Development  
Safety & Wellbeing  
Organisational Development  
Payroll

## STRATEGIC PROCUREMENT

**MANAGER**  
Ben Kempster

Tendering & Contract Management  
Contract & Procurement Policies  
Purchasing Practices & Policy  
Delegations

## FINANCIAL SERVICES

**MANAGER**  
Kate George

Rates Policy & Collections  
Budget & Management Accounting  
Grants & Subsidy Management  
Treasury  
Asset & Project Accounting  
Financial Accounting & Reporting  
Debtors  
Accounts Payable

## BUSINESS SYSTEMS & SOLUTIONS

**MANAGER**  
Lynette Paltridge

Information Strategy  
Planning and Business Engagement  
Technology Services  
Service Desk  
Continuous Improvement

## SALISBURY WATER

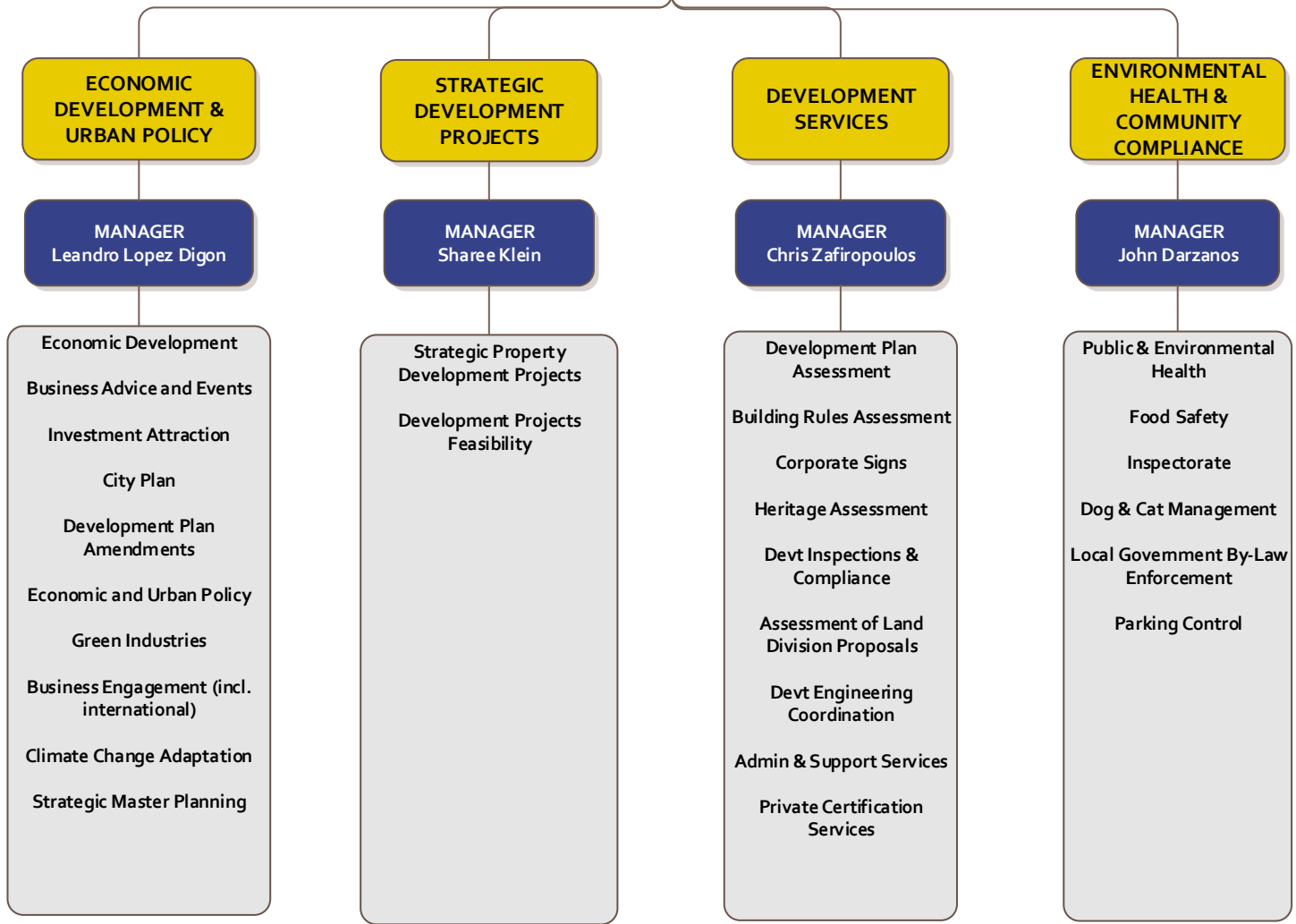
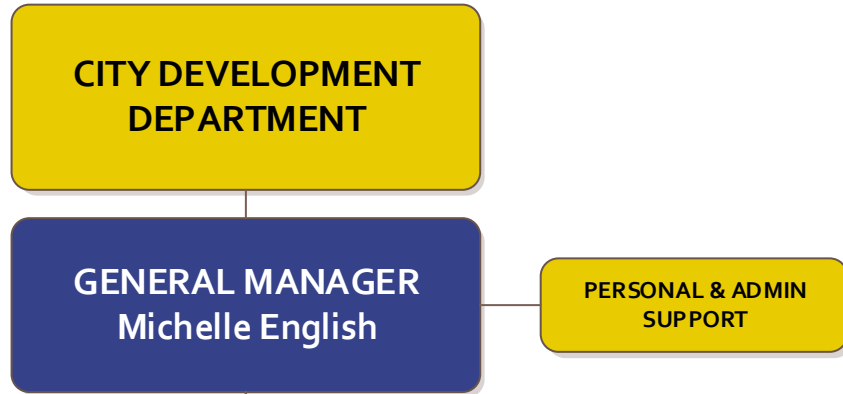
**MANAGER**  
Bruce Naumann

Salisbury Water Business Unit

## COMMUNITY EXPERIENCE & RELATIONSHIPS

**MANAGER**  
Julie Kushnir

Corporate Communications  
Media Relations & Communications  
Community Engagement  
Publications  
Community Experience





**CITY INFRASTRUCTURE DEPARTMENT**

**GENERAL MANAGER  
John Devine**

**PERSONAL & ADMIN  
SUPPORT**

**PROPERTY &  
BUILDINGS**

**MANAGER  
Karen Pepe**

- Property Acquisition and Disposal
- Walkway Closures
- Negotiations of Easements, Encroachments & Encumbrances
- Road Processes (Opening & Closing)
- Property Leasing
- Property & Bldg Maint
- Security Services, Graffiti Removal, Business Support, Store

**INFRASTRUCTURE  
MANAGEMENT**

**MANAGER  
Dameon Roy**

- Civil Design & Project Management
- Landscape Policy, Design & Project Management
- Traffic Management
- Strategic Asset Management
- Lighting & Electrical

**FIELD SERVICES**

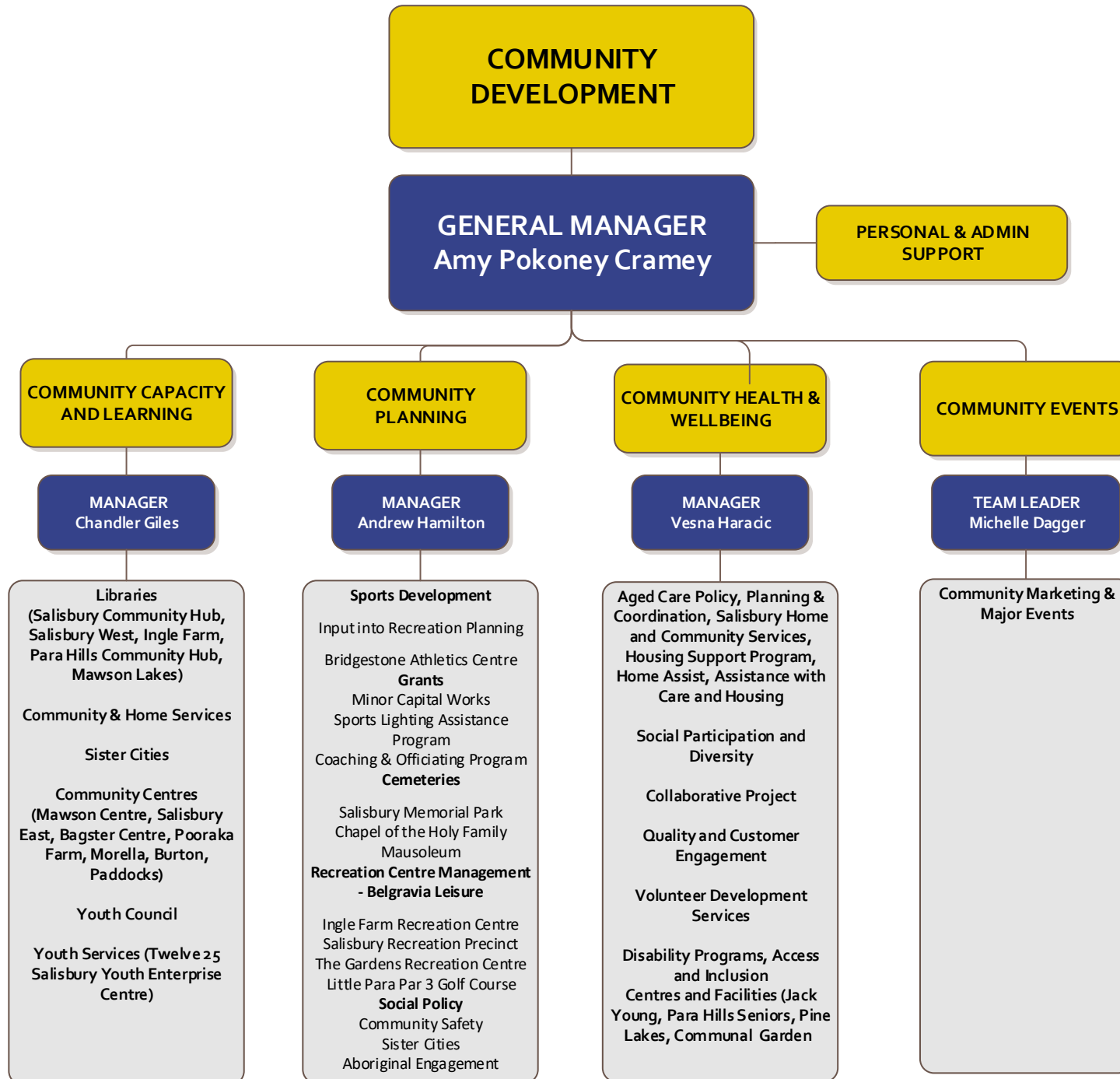
**MANAGER  
Mark Purdie**

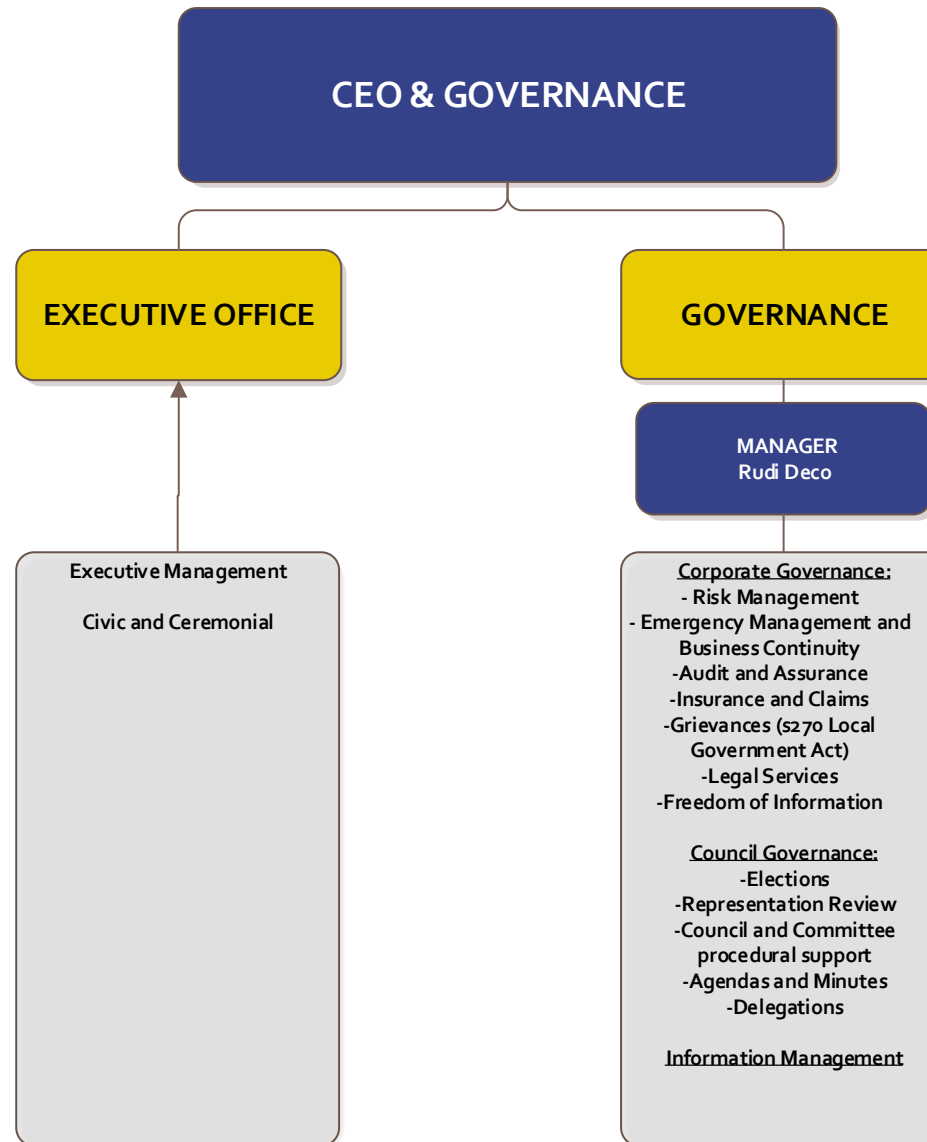
- Civil & Waste
- Drainage Services
- Waste Transfer Station
- Reserve Management
- Tree Services
- Turf & Horticultural Services
- Playground Maintenance
- Biodiversity
- Fleet & Workshop

**INFRASTRUCTURE  
DELIVERY**

**MANAGER  
Jarred Collins**

- Civil
- Building
- Landscape
- Survey
- Project Support







**CHIEF EXECUTIVE OFFICER**  
John Harry



**GOVERNANCE**  
Manager: Rudi Deco



**BUSINESS EXCELLENCE**  
General Manager  
Charles Mansueto

**PEOPLE & CULTURE**  
Manager: Stephanie Millard



**STRATEGIC PROCUREMENT**  
Manager: Ben Kempster



**FINANCIAL SERVICES**  
Manager: Kate George



**BUSINESS SYSTEMS AND SOLUTIONS**  
Manager: Lynette Paltridge



**SALISBURY WATER**  
Manager: Bruce Naumann



**COMMUNITY EXPERIENCE & RELATIONSHIPS**  
Manager: Julie Kushnir



**BUSINESS TRANSFORMATION**  
Director: Jayne Emerson



**CITY DEVELOPMENT**  
General Manager  
Michelle English



**ECONOMIC DEVELOPMENT & URBAN POLICY**  
Manager:  
Leandro Lopez Digon



**DEVELOPMENT SERVICES**  
Manager: Chris Zafiroopoulos



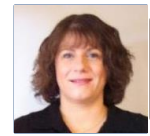
**ENVIRONMENTAL HEALTH & SAFETY**  
Manager: John Darzanos



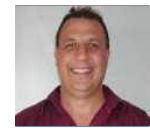
**STRATEGIC DEVELOPMENT PROJECTS**  
Manager: Sharee Klein



**CITY INFRASTRUCTURE**  
General Manager  
John Devine



**PROPERTY & BUILDINGS**  
Manager: Karen Pepe



**INFRASTRUCTURE MANAGEMENT**  
Manager: Dameon Roy



**FIELD SERVICES**  
Manager: Mark Purdie



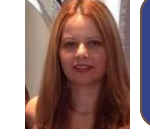
**INFRASTRUCTURE DELIVERY**  
Manager: Jarred Collins



**COMMUNITY DEVELOPMENT**  
General Manager  
Amy Pokoney-Cramey



**COMMUNITY PLANNING**  
Manager: Andrew Hamilton



**COMMUNITY HEALTH & WELLBEING**  
Manager: Vesna Haracic

**COMMUNITY CAPACITY & LEARNING**  
Manager: Chandler Giles