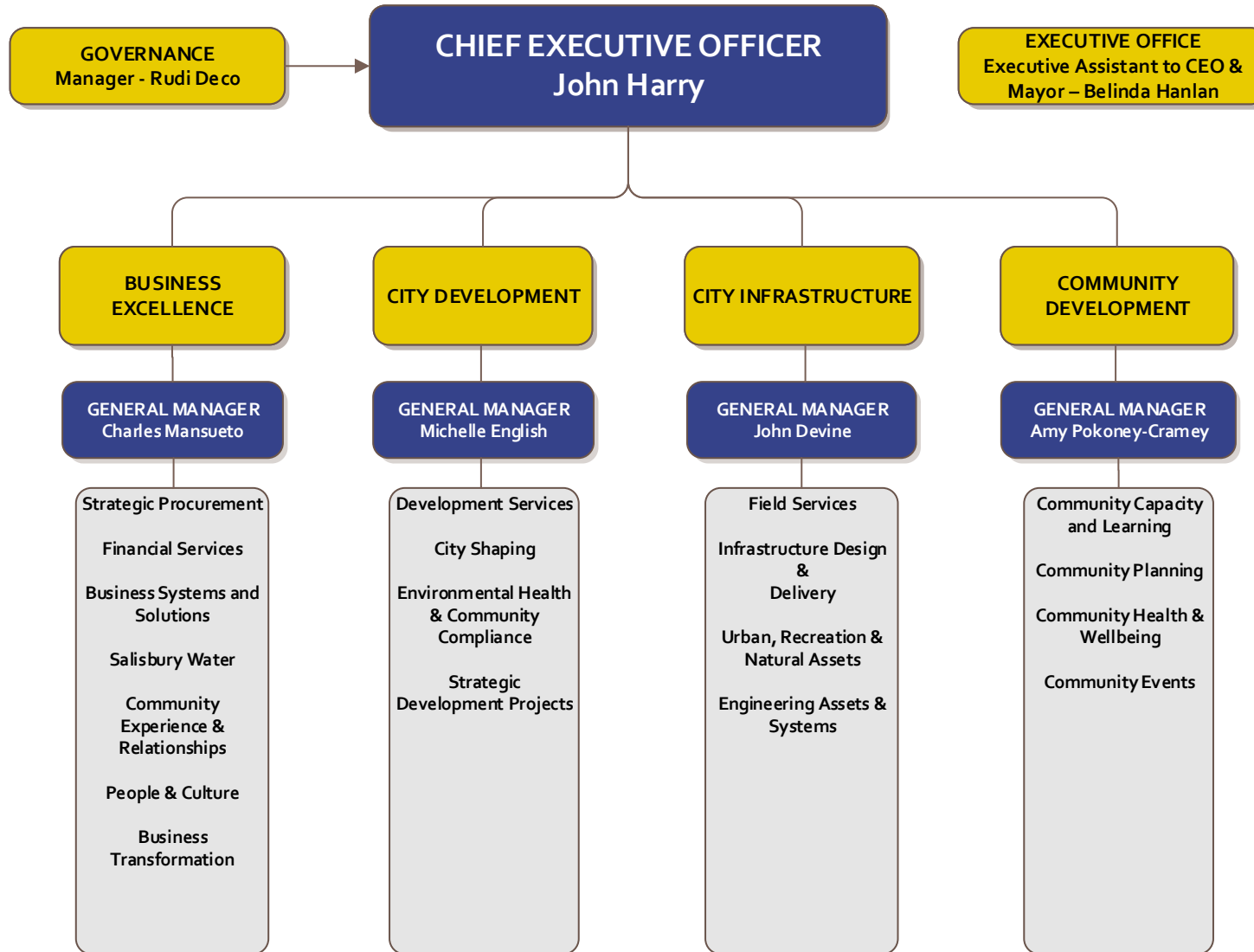




# ORGANISATION STRUCTURE





**BUSINESS EXCELLENCE  
DEPARTMENT**

**GENERAL MANAGER  
Charles Mansueto**

**PERSONAL & ADMIN  
SUPPORT  
PA to GM – Hayley Berrisford**

**BUSINESS  
TRANSFORMATION**

**MANAGER  
Jayne Emerson**

**Business  
Transformation**

**PEOPLE & CULTURE**

**MANAGER  
Vacant**

**Human Resource  
Services**  
**Employment &  
Industrial Relations**  
**Learning &  
Development**  
**Safety & Wellbeing**  
**Organisational  
Development**  
**Payroll**

**STRATEGIC  
PROCUREMENT**

**MANAGER  
Vacant**

**Tendering & Contract  
Management**  
**Contract &  
Procurement Policies**  
**Purchasing Practices &  
Policy**  
**Delegations**

**FINANCIAL SERVICES**

**MANAGER  
Kate George**

**Rates  
Policy & Collections**  
**Budget &  
Management  
Accounting**  
**Grants & Subsidy  
Management**  
**Treasury**  
**Asset & Project  
Accounting**  
**Financial Accounting &  
Reporting**  
**Debtors**  
**Accounts Payable**

**BUSINESS SYSTEMS  
& SOLUTIONS**

**MANAGER  
Lynette Paltridge**

**Information Strategy**  
**Planning and Business  
Engagement**  
**Technology Services**  
**Service Desk**  
**Information  
Management**  
**Continuous  
Improvement**

**SALISBURY WATER**

**MANAGER  
Bruce Naumann**

**Salisbury Water  
Business Unit**

**COMMUNITY  
EXPERIENCE &  
RELATIONSHIPS**

**MANAGER  
Vacant**

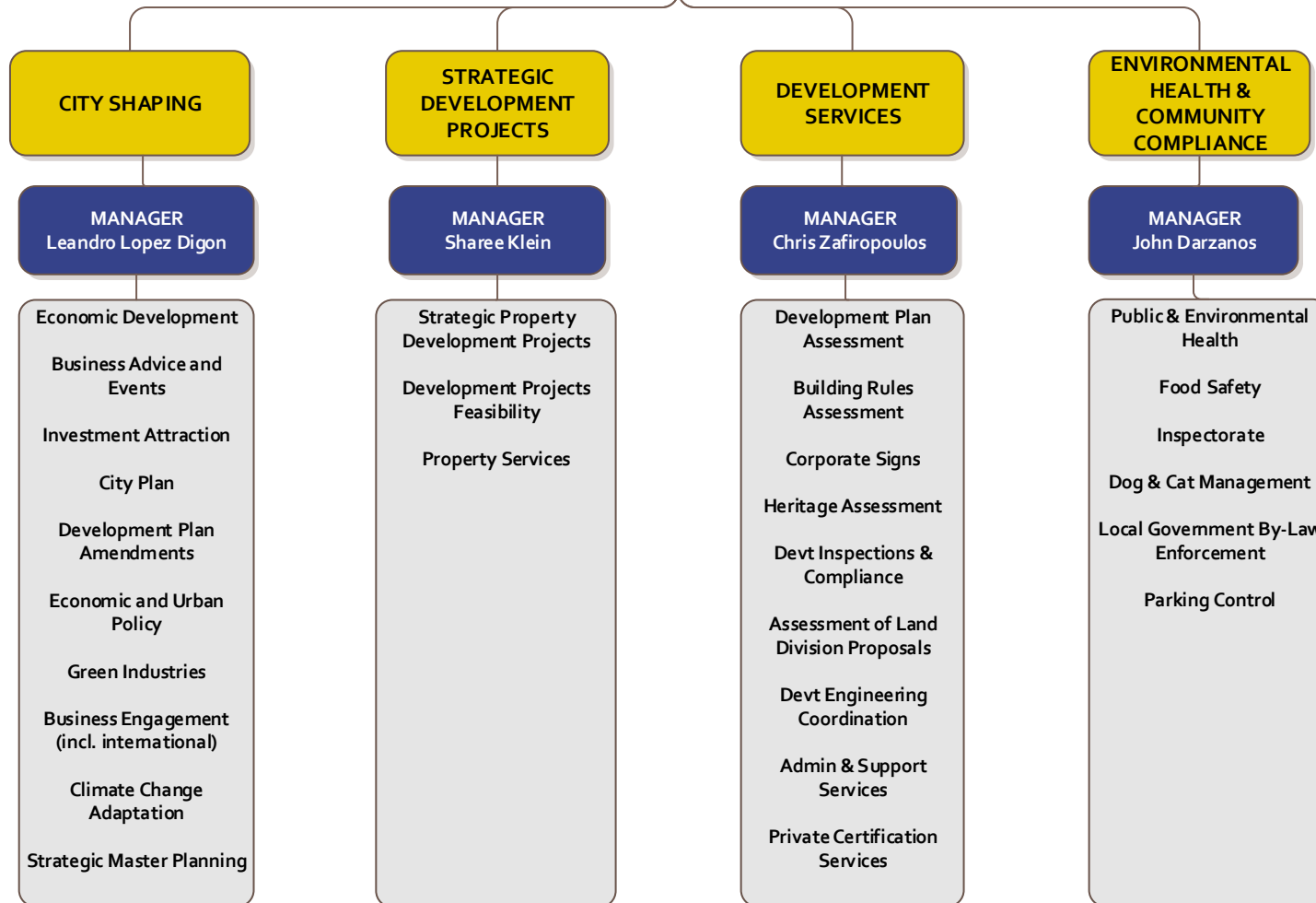
**Corporate  
Communications**  
**Community Marketing**  
**Media Relations &  
Communications**  
**Community  
Engagement**  
**Publications**



# CITY DEVELOPMENT DEPARTMENT

**GENERAL MANAGER**  
Michelle English

**PERSONAL & ADMIN SUPPORT**  
PA to GM - Michelle Whibley





# CITY INFRASTRUCTURE DEPARTMENT

**GENERAL MANAGER**  
John Devine

**PERSONAL & ADMIN SUPPORT**  
PA to GM & Team Leader  
City Infrastructure Administration-  
Heather Prasad

## FIELD SERVICES

**MANAGER**  
Mark Purdie

Road, Drainage, Footpath, Verge & Civil Maintenance  
Litter Collection & Graffiti Removal  
Signage & Line Marking  
Sportsgrounds, Turf and Irrigation Maintenance  
Playground, Reserve, Open Space, Wetlands & Biodiversity Maintenance  
Feature Landscape & City Centre Maintenance  
Pest & Weed Control  
Ornamental Lakes Maintenance  
Tree Planting & Maintenance  
Cemetery Maintenance  
Security  
Workshop, Fleet & Stores  
Building Maintenance  
Operational Contract Management

## INFRASTRUCTURE DESIGN & DELIVERY

**MANAGER**  
Jarred Collins

Civil Design (Roads, Traffic, Drainage, Building & Recreation)  
Road Reseal Contract Delivery  
Building Project Delivery  
Recreation Project Delivery  
Capital Works Program  
Capital Works Contract Management

## URBAN, RECREATION & NATURAL ASSETS

**MANAGER**  
Vacant

Capital Works Program Development  
Asset Management Planning (Open Space, Recreation, Building & Natural Assets)  
Street Tree Program Management  
Footpath and Pathway Programs  
Biodiversity & Environmental Management Programs  
Waste Contract Management  
Facilities Management  
Community and Sports Club Leases

## ENGINEERING ASSETS & SYSTEMS

**MANAGER**  
Vacant

Strategic Asset Management  
Capital Works Program Development  
Asset Management Planning (Transport & Civil Engineering Assets)  
Infrastructure Planning/Strategies  
Civil Structures  
Water Bodies, Drainage & Stormwater Management & Planning  
Coastal Structures  
Asset Data Management, Analysis & Reporting



# COMMUNITY DEVELOPMENT

**GENERAL MANAGER**  
Amy Pokoney-Cramey

**PERSONAL & ADMIN SUPPORT**  
PA to GM – Sara Howley

## COMMUNITY CAPACITY AND LEARNING

**MANAGER**  
Chandler Giles

**Libraries**  
(Salisbury Community Hub, Burton Community Hub, Para Hills Community Hub, Ingle Farm, Mawson Lakes)

Home Library Service

Sister Cities

Community Centres  
(Mawson Centre, Salisbury East, Bagster Road, Pooraka Farm, Morella)

Twelve 25 Youth Centre

## COMMUNITY PLANNING

**MANAGER**  
Andrew Hamilton

**Sports Development**

Input into Recreation Planning

Bridgestone Athletics Centre

**Grants**

Minor Capital Works

Sports Lighting Assistance Program

Coaching & Officiating Program

**Cemeteries**

Salisbury Memorial Park

Chapel of the Holy Family Mausoleum

**Recreation Centre Management - Belgravia Leisure**

Ingle Farm Recreation Centre

Salisbury Recreation Precinct

The Gardens Recreation Centre

Little Para Par 3 Golf Course

**Social Policy**

Community Safety

Sister Cities

Aboriginal Engagement

## COMMUNITY HEALTH & WELLBEING

**MANAGER**  
Vesna Haracic

Aged Care Policy, Planning & Coordination, Salisbury Home and Community Services, Housing Support Program, Home Assist, Assistance with Care and Housing

Social Participation and Diversity

Collaborative Project

Quality and Customer Engagement

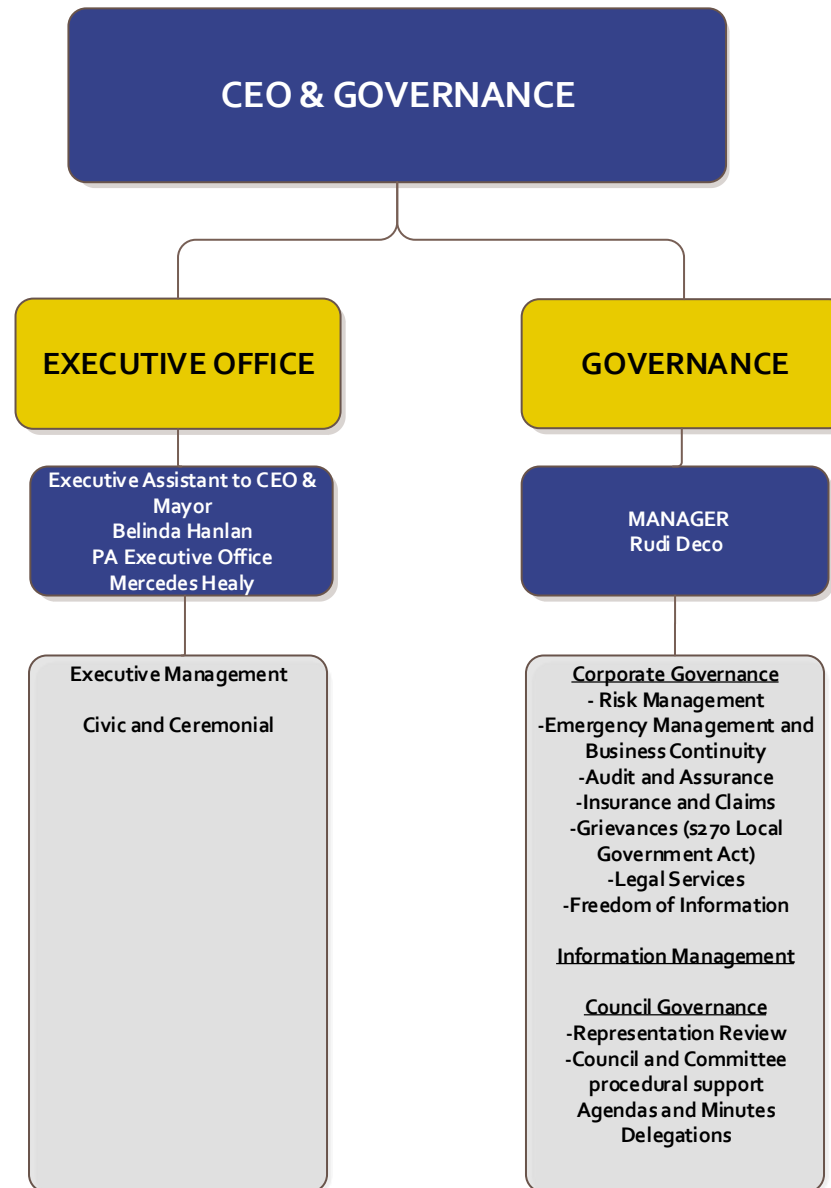
Volunteer Development Services

Disability Programs, Access and Inclusion Centres and Facilities (Jack Young, Para Hills Seniors, Pine Lakes, Communal Garden)

## COMMUNITY EVENTS

**TEAM LEADER**  
Michelle Dagger

Community Events





Executive Assistant to CEO & Mayor –  
Belinda Hanlan  
PA Executive Office – Mercedes Healy



**CHIEF EXECUTIVE OFFICER**  
**John Harry**



**GOVERNANCE**  
Manager: Rudi Deco



**BUSINESS EXCELLENCE**  
General Manager  
Charles Mansueto



**CITY DEVELOPMENT**  
General Manager  
Michelle English



**CITY INFRASTRUCTURE**  
General Manager  
John Devine



**COMMUNITY DEVELOPMENT**  
General Manager  
Amy Pokoney-Cramey



**PERSONAL & ADMIN SUPPORT**  
PA to GM – Hayley Berrisford



**PERSONAL & ADMIN SUPPORT**  
PA to GM - Michelle Whibley



**PERSONAL & ADMIN SUPPORT**  
PA to GM & Team Leader City Infrastructure Administration -  
Heather Prasad



**PERSONAL & ADMIN SUPPORT**  
PA to GM – Sara Howley



**BUSINESS TRANSFORMATION**  
Director: Jayne Emerson



**CITY SHAPING**  
Manager:  
Leandro Lopez Digon



**FIELD SERVICES**  
Manager: Mark Purdie



**COMMUNITY CAPACITY & LEARNING**  
Manager: Chandler Giles

**PEOPLE & CULTURE**  
Manager: Vacant



**STRATEGIC DEVELOPMENT PROJECTS**  
Manager: Sharee Klein



**INFRASTRUCTURE DESIGN & DELIVERY**  
Manager: Jarred Collins



**COMMUNITY PLANNING**  
Manager: Andrew Hamilton

**STRATEGIC PROCUREMENT**  
Manager: Vacant



**DEVELOPMENT SERVICES**  
Manager: Chris Zafirooulos



**URBAN, RECREATION & NATURAL ASSETS**  
Manager: Vacant



**COMMUNITY HEALTH & WELLBEING**  
Manager: Vesna Haracic



**FINANCIAL SERVICES**  
Manager: Kate George



**ENVIRONMENTAL HEALTH & SAFETY**  
Manager: John Darzanos



**ENGINEERING ASSETS & SYSTEMS**  
Manager: Vacant



**COMMUNITY EVENTS**  
Team Leader: Michelle Dagger



**BUSINESS SYSTEMS AND SOLUTIONS**  
Manager: Lynette Paltridge



**SALISBURY WATER**  
Manager: Bruce Naumann

**COMMUNITY EXPERIENCE & RELATIONSHIPS**  
Manager: Vacant