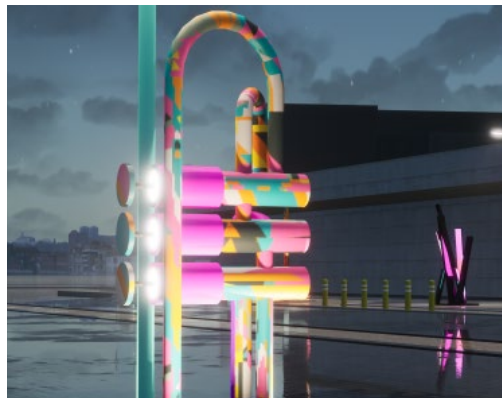




CITY OF SALISBURY WELCOMES NEW COUNCIL



YOUNG ACHIEVER PROFILE



CHURCH & JOHN STREET
REVITALISATION



BURTON COMMUNITY HUB



St Columba
College

Enrol Now
2024 & Beyond



www.stcolumba.sa.edu.au | 8254 0600

R-12 Anglican and Catholic College, President Avenue, Andrews Farm SA 5114

What an exciting time to be in the City of Salisbury!

It's not only the beginning of a wonderful new year, but a new election term is upon us, meaning there are some new faces ready to represent your interests at Council.

We postponed the release of this edition of Salisbury Aware because we wanted to allow you to become familiar with your new Council, which is made up of 15 representatives – two Elected Members for each of our seven wards and myself.

In the next few pages, you can hear from the Elected Members in their own words about what matters most to them in their local community.

As always, you are welcome to approach your ward councillor with issues related to the local area. Their details are available on Council's website (Salisbury.sa.gov.au).



Mayor Gillian Aldridge OAM

The latest edition of Salisbury Aware also includes highlights from across our great City, including an acknowledgement of St Kilda Adventure Playground's 40th anniversary, which occurred in October last year.

An interesting partnership between RM Williams and the Pooraka Men's Shed is also highlighted, while we give you a sneak peak into our upcoming interactive exhibition, HEXADECA.

At any time, Council is working behind the scenes on a great range of projects which benefit the community and help us to be more progressive, sustainable and connected.

We provide you an update on the latest within these pages too.

I hope you enjoy this summer issue of Salisbury Aware. If you have any feedback, queries or suggestions for articles please feel free to contact:

Communications@salisbury.sa.gov.au

Stay safe and enjoy the warm weather.

CONTENTS

- 04 Elected Members
- 05 Nuam is reaching for the stars
- 06 Introducing The City of Salisbury's new elected Council
- 11 Spinning into fun
- 12 Projects shaping our city
- 14 A Hub to be proud of
- 15 City Centre upgraded
- 16 An eye for success
- 17 Risk proves a Savvy move
- 18 Burton Community Hub
- 20 Crafted with love
- 21 Program pedals its way to record year
- 22 Keeping connected
- 25 Thinking green
- 26 On the market
- 27 Making the city more inclusive for all
- 28 Out and about
- 31 Your area – city works



SALISBURY AWARE

Editor ERICA VISSER

Production Manager HELEN ATKINS

Feature Writers TAYLOR HARVEY, LISA BACHMAYER, CLAUDINE SPINNER, MICHELLE ENGLISH, JANET WOOTTON & ERICA VISSER

Contributors JENNIFER SOTHMAN

Graphic Design ICON GRAPHIC DESIGN

Photography BLUE RAZOO PHOTOGRAPHY

Printing LANE PRINT GROUP

Distribution IVE

HAVE YOUR SAY Please send your story ideas and photographs for consideration for publication to: Editor Salisbury Aware, City of Salisbury, PO Box 8 Salisbury 5108 or email: city@salisbury.sa.gov.au

EXTRA PUBLICATION COPIES: Available from the Salisbury Council Office at 34 Church Street in Salisbury, local libraries and community centres, while stocks last.

MAYOR



Gillian Aldridge OAM
0411 703 706
galdridge@salisbury.sa.gov.au

CENTRAL WARD



Cr Chad Buchanan JP
Deputy Mayor
0403 677 807
cbuchanan@salisbury.sa.gov.au



Cr Severina Burner
0433 393 298
sburner@salisbury.sa.gov.au

SOUTH WARD



Cr Lauren Brug
0424 838 705
lbrug@salisbury.sa.gov.au



Cr Alan Graham
0433 647 670
agraham@salisbury.sa.gov.au

WEST WARD



Cr Beau Brug JP
bbrug@salisbury.sa.gov.au



Cr Sharon McKell
0423 411 055
smckell@salisbury.sa.gov.au

NORTH WARD



Cr Grace Bawden
0481 715 258
gbawden@salisbury.sa.gov.au



Cr David Hood JP
0432 799 931
dhood@salisbury.sa.gov.au

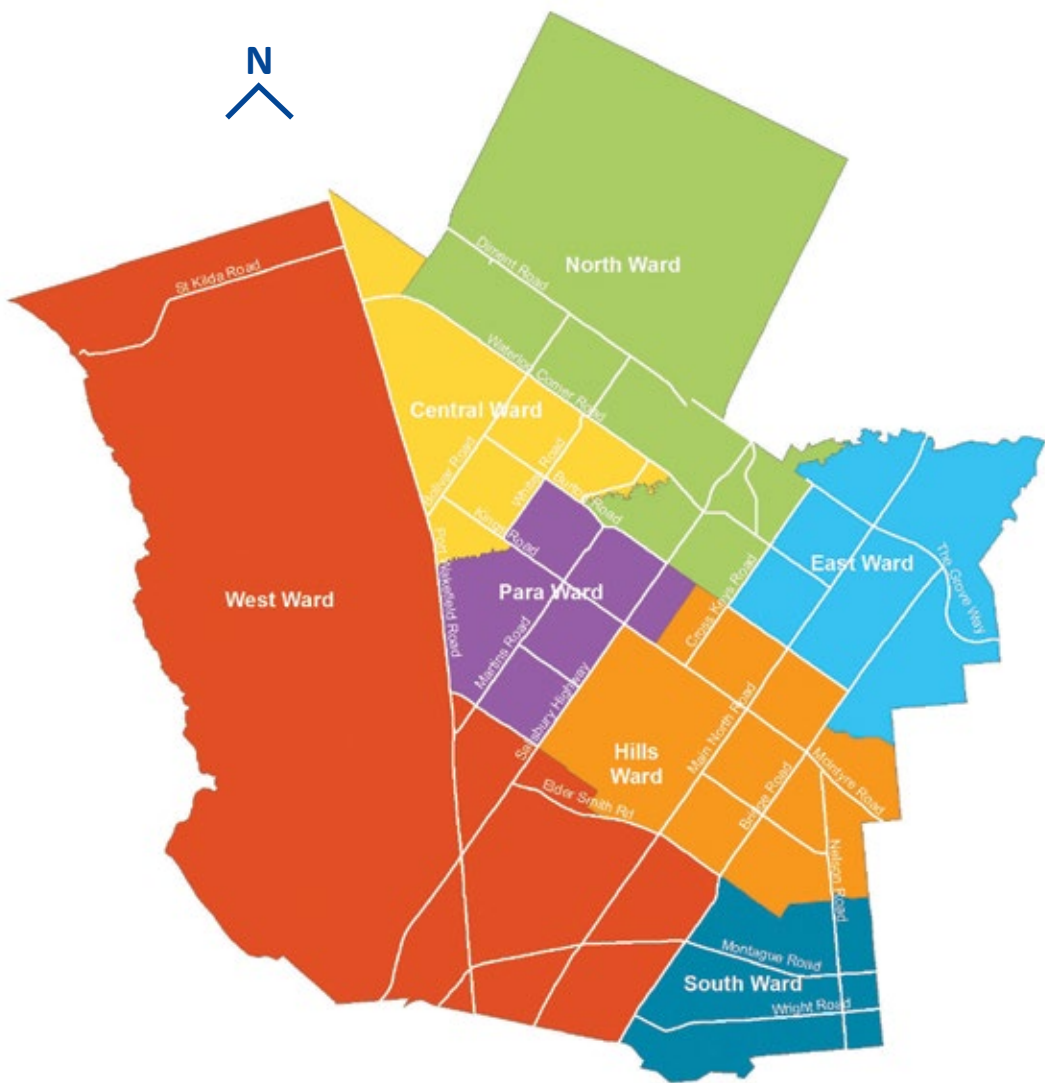
EAST WARD



Cr Johnny Chewparsad
0439 877 671
jchewparsad@salisbury.sa.gov.au



Cr Moni Mazzeo
0411 281 164
mmazzeo@salisbury.sa.gov.au



PARA WARD



Cr Kylie Grenfell
0433 703 691
kgrenfell@salisbury.sa.gov.au



Cr Sarah Ouk JP
0423 002 064
souk@salisbury.sa.gov.au

HILLS WARD



Cr Peter Jensen JP
0437 987 990
pjensen@salisbury.sa.gov.au



Cr Shiralee Reardon JP
0427 095 566
sreardon@salisbury.sa.gov.au

For more information visit: www.salisbury.sa.gov.au

WORDS Taylor Harvey

NUAM IS REACHING FOR THE STARS

Whether you are young or old, dreams drive us to follow the path towards our goals, regardless of the obstacles.

Man Nuam is a great example of someone working tirelessly and stopping at nothing to achieve their full potential.

After growing up in Malaysia, Nuam moved to Australia with her family in 2019. The move has since provided a number of great opportunities for the ambitious student.

One of those great opportunities included discovering the Twelve25 Youth Centre in early 2021, which has been a positive influence on the teenager's life.

Nuam approached Twelve25 with the desire to participate in the Duke of Edinburgh Award to become more engaged with the community and develop her skills and confidence.

After speaking with helpful staff at Twelve25, a feeling of isolation and being unprepared for life after school faded away, allowing her to develop a desire to become a police officer.

Nuam described the role of a police officer as someone who is highly engaged with their community and has the motivation to help people and treat them with respect.

With plenty of drive and motivation behind her, Nuam and the staff at Twelve25 then sat down to help Nuam develop her application for the Father Chris Riley's Youth off the Street National Scholarship Program.

The scholarship, which is offered yearly to about 20 young people across Australia,



The future is bright for Man Nuam, who is one of 20 young people country wide to receive a Youth Off The Street scholarship this year with support from Twelve25 Youth Centre.

provides successful applicants with \$6,000 to use towards their educational and training goals over a two-year period.

Despite being quietly optimistic, Nuam said she couldn't contain her joy when she learnt that her application had been successful.

"I was really shocked. I found out on a Friday after school and I remember thinking to myself that 'this was the best day ever' – I was so excited," she said.

The scholarship commenced in November last year, and will see Nuam undertake meetings with mentors, begin specific educational courses and obtain relevant certificates.

Twelve25's Program Administration Officer Sarah Bevan said Nuam has grown in

confidence since she first walked through the door at Twelve25 and has set a great example for her peers.

"We can provide these opportunities to young people, but for Nuam, she has taken the opportunity and has put herself out there – she has inspired others to follow in her footsteps," Sarah said.

Although Nuam has worked hard to make her dream a reality, she has praised the key role Twelve25 has played, and hopes others take advantage of the resources on offer.

Twelve25 can cover 75 per cent of the cost on pre-selected employment training courses and certificates for young people who live, work or study in Salisbury.

For details visit:
www.salisbury.sa.gov.au/twelve25

WORDS Erica Visser

INTRODUCING THE CITY OF SALISBURY'S **NEW ELECTED COUNCIL**



Our new City of Salisbury Council was sworn in during November.

Every four years, residents are invited to vote to elect the members of our community who will represent them for the coming election term.

An election was held late last year, with a new Council sworn in on November 28.

After receiving the most votes in the mayoral category of the City of Salisbury Local Government elections, Gillian Aldridge OAM will serve the City of Salisbury for a fifth term.

Mayor Aldridge won with 14,661 votes in the mayoral election, with former councillor

Graham Reynolds receiving 11,496 votes to finish second.

The mayor is joined on Council by seven first time councillors and seven returning councillors.

Mayor Aldridge said she looked forward to working with Council over the coming term.

"The returning elected members coupled with new faces will bring a mix of experience and fresh energy and ideas to Council on how to better serve our community," Mayor-Elect Aldridge said.

"I am grateful for your support and look forward to continuing to working towards a

more progressive, sustainable and connected Salisbury for all of us."

Returning councillors include Chad Buchanan, Peter Jensen, Shiralee Reardon, David Hood, Kylie Grenfell, Sarah Ouk and Beau Brug.

New councillors include Severina Burner, Johnny Chewparsad, Moni Mazzeo, Grace Bawden, Sharon McKell, Alan Graham and Lauren Brug.

More than 30,000 ballot papers were counted with a third of registered Salisbury voters casting their ballot this election – about 7,000 more votes than last local election held in 2018.

We asked our elected members...

What motivated you to run for Council?

MAYOR



Gillian Aldridge OAM

I am honoured to have the opportunity to continue to serve our community for another four years having been successful in my bid to be re-elected as Mayor of City of Salisbury.

It is my fifth consecutive term as Mayor and I first joined Council

as an Elected Member 34 years ago, in 1988.

“I am passionate about the people who make Salisbury a vibrant place”

My favourite part of being Mayor is the opportunity to help shape the City I love.

I get to speak with so many of you about the things you are proud of and care about and take these on board when making important decisions.



I am passionate about the people who make Salisbury a vibrant place to be and I will always fight for their best interests.

I look forward to listening to the issues that matter to you and working together to achieve more exciting things for our great City throughout the next four years to benefit us now and for generations to come.

CENTRAL WARD



**Deputy Mayor
Cr Chad Buchanan JP**

Thank you to the residents of Central Ward for giving me the opportunity to once again serve them as their local councillor. I would also like to thank my colleagues for unanimously electing me as their Deputy Mayor. Over the next four years, focussing Council's resources

on key services will be a priority of mine. This will include improving verge maintenance, addressing local flooding issues and bettering our local reserves and play spaces. I am also passionate about establishing a portable CCTV program to help prevent incidences of anti-social behaviour including hoon driving, graffiti and illegal dumping at certain hot spots. I will also continue to advocate to the State Government for the upgrade/repair of Kings and Waterloo Corner Roads and Park Tce Level Rail Crossing.



Cr Severina Burner

I nominated for Councillor as I am concerned about the divisive politics impacting on the inclusion and exclusion of residents in civic life and the overreach of Council in some matters in the private lives of residents, such as planning and development. The ever-increasing cost of rates during a

time when people have lost jobs is becoming a growing concern, as is homelessness. Living in the area should not be a privilege enjoyed by only the young, able-bodied, affluent or employed. I also want to make a positive contribution towards local projects, including lobbying for the Kings Rd upgrade.

SOUTH WARD



Cr Lauen Brug

I have always been passionate about helping the community, including assisting in service clubs like Rotary and Lions, and running the Lions Club of Salisbury. After purchasing our home in Ingle Farm, I became driven to make South Ward and the City of Salisbury a great place to live. I consider that

everyone should have access to basic necessities like footpaths, lighting and playgrounds that encourage us to get out into our local communities. I want to be known to my constituents as approachable and willing to advocate for them. Please get in touch if there is anything I can do to help.



Cr Alan Graham

Having spent the last nearly 23 years as a serving police officer, coupled with my community work on school councils, local sporting club committees and various charity work; I saw running for Council as a great opportunity for me to provide new and exciting ways to contribute to, and serve

my local community. I grew up and am a proud resident of the City of Salisbury, and the thought of further representing and serving its residents was too good to pass up.

HILLS WARD



Cr Peter Jensen JP

I'm honoured to be re-elected to Council. I remain committed to ensuring Council continues on delivering free green waste bins, major upgrades to the Paddocks precinct and local reserves and sporting clubs. I will continue to fight to keep Council rates low, oppose wasteful spending and prioritise

Council's limited budget on basic services. I am passionate about improving the amenity of our local community through investing in decent footpaths, roads, parks, and verges. I will work to roll out a portable CCTV program to tackle hoons and illegal dumping in hot spot areas and ensure established suburbs like ours aren't neglected.



Cr Shiralee Reardon JP

When I am asked the question, "Why did I decide to nominate for Council?" the answer is the same today as when I was first elected. It is quite simple really – I like helping people, and I have the honour and privilege of helping people who live in the Hills ward.

To be able to voice their concerns, resolve their problems with Council and ensure that our area continues to be well maintained and upgraded with improved services. Simple things such as new and improved playgrounds, supporting our sporting and community groups, can make a positive difference to our community in the Hills ward.

WEST WARD



Cr Beau Brug JP

I was inspired to run for Council to serve my local community after seeing many grassroots issues in my community go unaddressed and being passionate about my area, I wanted to stand up and demand better. I will listen and advocate for you, and that's my commitment. I look forward to

seeing you at my regular 'Coffee with the Councillor' meetings at local cafes to stay connected and hear from you.



Cr Sharon McKell

I was inspired to run for Council as I am very community minded and love to meet people. I retired in June 2022 from The Family Court of Australia after working there for 23 years and felt that I would like to pursue a new path that involved community and helping others. As well as doing

volunteer work as a court support person, I thought running for Council would be a positive way of helping people in my local community.

NORTH WARD



Cr Grace Bawden

I nominated for Councillor as I am deeply concerned about expensive decisions which are serving to jack up our Council rates and the growing unaffordability of living in the area if you are on a low income, single, disabled, aged or infirmed. Residents should not risk losing their home when

a parent dies, a couple divorces, a child moves out or they can't afford their rates due to loss of a job. I am also alarmed about the escalation of airport noises and continuing encroachment by governments and corporations over the rights of residents to enjoy their own property.



Cr David Hood JP

I'm honoured to continue representing my community of North Ward. I'll continue to protect our precious community land from developers and will fight to keep rates low, oppose wasteful spending and focus Council's limited budget on basic services like footpaths, decent roads, parks, and verges.

I'll also lobby the State Government to fix Park Terrace Rail Crossing, Kings Road, and Waterloo Corner Road. Also, the delivery of free green bins, rollout of CCTV to tackle hoons, improving verges, upgrading Diment Road, and John/Church Street. I will ensure established suburbs like ours are not neglected.

EAST WARD



Cr Johnny Chewparsad

Since 2009 I have lived and have raised my family in the City of Salisbury. We worked, schooled and used amenities which helped us thrive. I am passionate about helping and growing the community to be successful. My focus is to encourage education leading to employment and boosting

confidence in the community. Assist and promote safety for all and improve playgrounds, ovals, pathways, transport and amenities. I want to help, promote, connect and welcome people to the City of Salisbury. As a new Elected Member, I am your representative to channel your voice for the enhancement of our community for our future generations.



Cr Moni Mazzeo

I have an extensive business background in the local area for over 25 years. Because of the skills, knowledge and experience I have gained in business, I believe that I can add value to the council. I genuinely enjoy helping people and understand the needs of the local community. While

still operating two businesses in the area I am keen to support the residents of the Salisbury Council Area. I'm willing to be a voice and advocate for residents and I'm committed to listening and helping to prioritise a safe and inclusive community and quality of life for all residents.

PARA WARD



Cr Kylie Grenfell

I am passionate about representing all aspects of community. From the children to the elderly, from homes to small business, it is these people that make our community so unique and wonderful. Being able to get out and talk to people about what makes the area special to

them is what helps me know where to focus our resources for council. Supporting local business is how we keep jobs available for our youth and enable them to reach their full potential. Volunteering is a big part of our community too and is why I remain active in local schools.



Cr Sarah Ouk JP

I am passionate about helping the community to voice their concerns, especially those from CALD (Culturally and Linguistically Diverse) backgrounds whose English is limited, but overall I love helping Para Ward and the greater City of Salisbury residents.



STPATRICK'S
Technical College



“
**YOUR TRADE
CAREER
STARTS HERE!**
”

Purpose-built trade facilities
Eight pre-apprenticeship VET programs
Trade relevant SACE curriculum
Innovative structure and delivery
Partnered with and guided by industry
Real workplace experience
School-based apprenticeships
Fees are no barrier

**DISCOVER &
LEARN MORE!**

Register for a college tour or event to learn more about our unique model of education.

.....
Visit our website for 2023 tour and event dates, bookings and further information.

REGISTRATIONS ESSENTIAL
www.stpatstech.sa.edu.au

2-6 Hooke Road Edinburgh North SA
www.stpatstech.sa.edu.au | 8209 3700

**YEAR 10-12 EDUCATION, TRAINING
& APPRENTICESHIP PATHWAYS**

WORDS Claudine Spinner

SPINNING INTO

The exciting debut of the highly interactive **HEXADECA** during **WOMAdelaide 2022** and in **Rundle Mall** caught the eyes of many across Adelaide last year.

And now it is time for the Salisbury Community Hub to host the exciting **HEXADECA** Light & Sound Experience.

The City of Salisbury will launch **HEXADECA** in January, giving the public an opportunity to experience the popular artwork for themselves.

HEXADECA was created by Pulsing Art, an Adelaide-based creative studio and comprises of 16 hexagon fibreglass bucket seats.

Audiences are encouraged to sit and spin in the seats, with each activating portions of a musical soundtrack, or score – this process makes the person feel like they are the conductor of their very own orchestra.

As one person finds a seat and begins to spin, one part of a musical score begins to play. As another participant begins to spin, another segment of the score is heard.

When all seats are spinning the full musical score can be heard.

The core music for the work has been custom composed and recorded by eight Australian artists, with the tracks ranging from electronic to beatboxing and everything in between.

As natural light fades, the musical seats will showcase another one of its many surprises.



The **HEXADECA** Light & Sound Experience will arrive at the Salisbury Community Hub on January 16.

The seat's activity will result in each of them glowing internally.

Pulsing Art Founder Joren Dawson said he was incredibly excited to bring the experience to the Salisbury Community Hub.

"The **HEXADECA** Light & Sound Experience at the Salisbury Community Hub will be the first time that it will be based indoors," Joren said.

"We are really excited. I believe that being indoors will create a great environment and allow people to use the **HEXADECA** Experience and also explore the Hub."

HEXADECA encourages play for people of all ages and abilities to enjoy.

"It has been wonderful to see the ranges of ages engage with the experience. We have seen examples of happy grandchildren playing alongside their grandma," Joren said.

"The aim of the experience is to bring people together through the use of interactive play, and I hope the people of Salisbury will enjoy the experience."

The free **HEXADECA Light & Sound Experience will be available from 16 to 29 January 2023 at the Salisbury Community Hub.**

Attendees will also be able to take part in a range of exciting programs, including a panel interview with the creative artists.

For more information please visit:
<https://www.salisbury.sa.gov.au/hexadeca>

WORDS Taylor Harvey

PROJECTS SHAPING OUR CITY

A number of exciting projects are taking place across Salisbury to shape our City for years to come.



Mayor Gillian Aldridge OAM with Mossop Construction Director Grant Mossop at the Salisbury Aquatic and Recreation Precinct site.

The City of Salisbury's desire to be 'a progressive, sustainable and connected community' informs our extensive range of ongoing and planned initiatives.

Below we outline a few that are currently on the radar.

Salisbury Aquatic and Recreation Precinct

Salisbury is full of inviting community spaces that encourage social interactions and connections.

The \$29.9 million Salisbury Aquatic and Recreation Precinct Redevelopment is one of

the many exciting projects to be completed over the next couple of years.

Not only will the swimming precinct make a positive splash throughout the City of Salisbury, it will also offer high-quality facilities to people living in the northern suburbs.

Salisbury residents had a say on key elements of the redevelopment which include; a new 50 metre outdoor pool, heated 25 metre indoor lap and leisure pools, water slides, a gymnasium, water play park and café.

Throughout the precinct's design process, Council emphasised its desire to create a

facility that was sustainable, but was also accessible and inclusive for the community.

The combination of indoor and outdoor pools enables year-round usage, while also encouraging visitors to enjoy the fantastic natural surroundings and walking trails.

Expected to be completed in mid-2024, building works officially commenced in November 2022.

The construction process will create more than 90 jobs, while around 27 jobs will be created following its completion. Mossop Construction and Interiors is delivering the project.

Land located west of Port Wakefield Road

Another key opportunity for the City of Salisbury to positively shape its future is the use of land located west of Port Wakefield Road towards the coast.

Council endorsed a high-level report outlining its vision for the area, which will shape the needs of our growing community.

The vision looks to deliver additional employment lands and housing, leverage recreation and eco-tourism opportunities and protect the unique coastal environment.

One of the biggest opportunities that the land presents is the Salt Pans Development, which is the region's most significant opportunity for a master-planned residential community.



The highly-anticipated Salisbury Aquatic and Recreation Precinct will be one of Salisbury's premier attractions when it is scheduled to open in 2024. The project is currently in the design process, but here is a glimpse of what the new centre may look like.

It is also important to note that the sensitive ecological area provides environmental habitat for land-based, coastal and marine species.

Council understands that the preservation of important species is critical, so any future development will have to consider the future of those who call the area home.

With an area of about 950 hectares, there is a potential for up to 15,000 houses to be built.

A coordinated approach between government and private landowners is critical to ensure this future development meets community needs and is environmentally sound.

The land west of Port Wakefield Road also presents an economic growth opportunity, with potential rezoning to support new jobs.

Council will consider the suitability of a variety of land uses, including an eco-commercial/ manufacturing park, transport logistics, and places of worship.

This area provides the opportunity for the ongoing future development of the City of Salisbury and is already well serviced with infrastructure.

The land is home to many key pieces of infrastructure – this includes a Federal

Government owned defence radar facility, as well as the Bolivar Wastewater Treatment Plant.



An artist's impression of the 50-metre swimming pool that will be an exciting feature of the Salisbury Aquatic Centre.

WORDS Taylor Harvey

A HUB TO BE PROUD OF



Community hubs are fantastic meeting places that offer great opportunities for residents to get involved in engaging and enjoyable programs.

The newest addition to the City of Salisbury's long list of great community focused facilities is the Burton Community Hub, 380 Waterloo Corner Road, which was officially opened in July last year.

More than 4,000 excited community members walked through the door of the new hub, giving them their first opportunity to view the new spaces available for the public.

Whether it was making their own bee home in The Workshop, or joining in on one of the communal garden's hands-on sessions,

attendees enjoyed their first taste of the new hub.

There was also a range of activities and taster sessions held inside, including the hub's new Tech Lab, which contains 10 e-sports gaming computers.

Fantastic tech spaces will underpin the Hub's future creative technologies programs, which will involve the use of virtual and augmented reality.

Technology can often be a drawcard for young children, and the Burton Community



Hub will lead the way for Salisbury in this space.

Residents will be happy to hear that the Burton Community Hub will offer a wide-range of exciting new programs for the whole community to enjoy throughout 2023.

Whether it be getting your hands dirty in the communal garden, borrowing your favourite book from the library or using the professional podcasting studio, the Burton Community Hub caters for the entire community and all hobbies.

For the latest information on all the new programs at the Burton Community Hub, check out our term guide at:
www.salisbury.sa.gov.au/termguide

WORDS Taylor Harvey

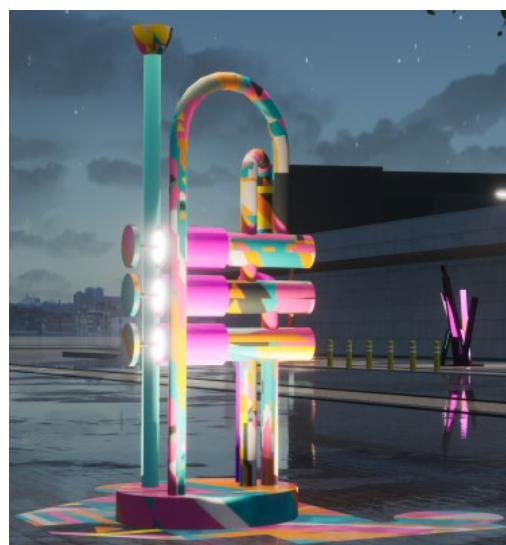
CITY CENTRE UPGRADED

Salisbury's City Centre is a newly revitalised, vibrant meeting place, home to a number of businesses, eateries and professional services with opportunities for all.

The \$10 million Church and John Streets Revitalisation Project includes vastly upgraded streetscape features, public art pieces, street furniture and installation of upgraded Wi-Fi LED lighting.

The project has created a renewed, fresh and vibrant atmosphere that complements the Salisbury Community Hub and the greater City Centre and will be completed within the first quarter of 2023.

The revitalisation will create many benefits, such as making the precinct more visually attractive to encourage future economic



A colourful trumpet piece of artwork will be installed.

"City of Salisbury has been committed to delivering a City Centre that will create positive outcomes well into the future"

investment as well as improving amenity safety for shoppers, pedestrians, visitors, cycle and vehicle traffic alike.

By creating an open and free-flowing streetscape, there are now more opportunities to utilise the space for recreational activities, events and outdoor dining making it an attractive place to meet.

With open space being created, the precinct still maintains its strong identity, all while showcasing a new, fresh and vibrant look.

These additions provide high-quality amenities to residents and traders, while improved paving will make walking along Church and John Streets safer and more comfortable.

Since the planning stages of the revitalisation, the City of Salisbury has been committed to delivering a City Centre that will create positive outcomes well into the future.



One of five pieces of artwork that will be installed as part of the project.

The Church and John Streets Revitalisation Project was also supported by funding from the Federal Government's Local Roads and Community Infrastructure Program.

WORDS Janet Wootton

AN EYE FOR SUCCESS

Brow Threads and Lashes, which is based at Parabanks Shopping Centre, is a prime example of a local business giving back to the community that supports it.

Brow Threads and Lashes is an amazing local business with dedicated, hardworking owners Rosie Kaur and Bhupinder Singh and their staff.

Bhupinder came to Adelaide from India's Punjab in 2010 to study a Diploma in Business Management and an Advanced Diploma in Business. In 2014 his partner Rosie joined him after completing a post graduate course in Cosmetology.

Soon after arriving Rosie started her job as a beautician, but in 2020 due to impacts of COVID on the business she lost her job.

But with more than 15 years' experience in the beauty industry they decided to open up their own shop.

Luckily, they found the perfect shop in Parabanks. Since then they have been overwhelmed by the response from the Salisbury community.

Rosie started the business on her own and within no time she had to hire two other beauticians, Mannu and Laxmi.

The couple believes in treating staff with respect, which they say is repaid with loyalty,

with the first beautician hired still with the business now.

Rosie and Bhupinder offer great bonuses and try to be flexible. They also hire locals which is great for the northern region.

"Salisbury has a special spot in our hearts because of the Salisbury community. They welcomed us and gave us so much love and showed trust from day one", Rosie said.

"We try to contribute to local events as much as we can and over the years we have supported Christmas campaigns, National Volunteer Week, Local Volunteer Recognition Program and now have just come on board as a Bronze Sponsor for the Salisbury Community Christmas Parade, to give back to our community."

In July 2021 the couple opened their second salon at Rundle Mall, 'Rosie Brow N Lashes'. Fast forward 18 months and they are now running five successful salons across Adelaide and employ more than 15 beauticians.

"When the Salisbury City Centre Awards came around we were nominated by our community and ended up winning the '2021 Best New Business/Rising Star Award,'" said Rosie. "Then in 2022 we obtained the award for the best business in the 'Hair and Beauty' category. We are very proud to be a part of the Salisbury Community."

If you are thinking of starting a business you can seek information and find out what support is available through the Business and Innovation Centre.



Brows and Threads owner Rosie, store manager Rupinder and team members Mandy and Aman.

POLARIS
BUSINESS AND INNOVATION CENTRE

RISK PROVES A SAVVY MOVE

At the height of the pandemic, Kim Rondeau started a boutique property management business from her spare bedroom, joined by long-time colleague Sandy Bell.

The pair of real estate professionals focused on offering a stress-free and seamless experience for their clients.

Just 18 months later, business is booming and Kim has traded in the bedroom for a commercial office.

When starting out Kim visited the Polaris Business and Innovation Centre to seek support with her first business plan and attended some educational workshops.

Kim and Sandy have also enjoyed attending the Women in Business events, which they consider an important part of their calendar.

As qualified property managers and sales agents, Kim and Sandy make a strong team giving buyers, sellers and investors solid information backed by local market knowledge.

They have seen an influx of new families, first home buyers and investors throughout the Salisbury region.

Kim said that there is a definite rejuvenation within Salisbury, from Mawson Lakes' modern urban living to the traditional blocks of Salisbury East or Paralowie, and demand has increased vastly.

Having good knowledge of Salisbury gives buyers confidence in purchasing a



In 18 short months, Kim Rondeau has taken her business from the spare bedroom at her home to a new Greenacres office site.

property and ensuring they meet vendors expectations.

The company's property portfolios have expanded and they now manage investment properties in the whole metropolitan area.

They believe that the northern connector brings unity to the north, and see the growth of Angle Vale and Two Wells as a testament of the liveability of the north of Adelaide.

Kim said that one of the highlights of her real estate career has been to manage and sell properties in Mawson Lakes for more than 10 years.

In November and December last year Kim celebrated the business' second anniversary at its new premises in Greenacres and is planning to employ another two staff members with a focus is on hiring people with the right personality rather than skill.

If you are interested in receiving business support visit:
www.polariscentre.com.au

Join us at the new **Burton Com**

COMING IN TERM 1 2023

Sophie Thomson **from Gardening Australia**

Saturday 4 February | 10am to 11.30am

Join Sophie (from Gardening Australia) for a session on Habitat Gardening. Learn how to attract animals such as bees, birds, butterflies, frogs, lizards, beneficial insects and more.

You may recognise Sophie from ABC TV's Gardening Australia or from her regular columns in Gardening Australia Magazine, Sunday Mail, the Weekender Herald and her recent best-selling book 'Sophie's Patch'.

Bookings essential



Gardening Programs

Gardening Workshops

For adults wanting information and support to grow their own food at home with the relevant skills and knowledge to do this confidently and successfully.

Over 50's Gardening Program

This group is actively in the garden doing a variety of task to keep the garden flourishing including sowing and planting out garden beds, building new structures for the garden beds, shade frames, other gardening-based building projects.

The Tech Lab

Monthly Mums Podcast Program

The Mouthy Mums Podcast program is designed for Mums keen to learn how to create a professional podcast.

Burton Mini Gigs

This eight week program teaches how to film and livestream mini concerts with musicians, then add the content to your own showreel.

E-sports

Keep an eye out for our great esports programs and events.

Burton Community Hub Easter Market

Sunday 2 April

10am-2pm

Browse a range of wares offered by local producers, community groups and small businesses.



Community Hub

A welcoming place for all

Health and Wellbeing Activities

Ladies fitness with BFT Fitness

A great fitness class for ladies of all ages to enjoy and have some fun.

Boxing with BFT Fitness

Available for people at any fitness level, these classes build strength and improve fitness of the body and the mind.

Art Therapy with Artfelt Ventures

In this adult art therapy session you are given the opportunity to explore and express your thoughts and feelings about an issue using an artistic process, and then reflect on your artwork.

Blokes Brunch

An inclusive brunch session for men of all ages, cultural backgrounds and abilities to enjoy a social catch up.

Over 50s Friendship Group

Social group for providing an opportunity to meet people and learn about interesting topics from guest speakers.

Heart Foundation Walking Group

Joining our Tuesday Heart Foundation Walking group will help you to reduce stress, be more alert, have a healthier body and build strong relationships.

Social Activities for adults with an intellectual disability (NDIS)

Come out and meet a new group of friends and try something new including individual and group activities, social outings, arts and crafts.

COST: NDIS centre based activity group (6 hours)

The Shed Program (NDIS)

Come along to The Workshop, meet new people, use your skills or learn new ones in a friendly supportive environment

Children's Programs

Storytime

Each week our local pre-schoolers can enjoy listening to a great new story and do some craft activities.

Maggie Moo Music and Movement

In a session for children aged 0-4 years, you can expect lots of singing, dancing, musical instruments, parachute play, bubbles and learning all to our much-loved Moo Music original songs.

Burton Crafter noons

This after school activity is ideal for those with a creative heart who enjoy all types of craft.



Little Chef

A great new program for children aged 3 to 5 years where they can have fun cooking, learning new recipes and trying different foods!

After School Cooking Club

Come and join an interactive cooking class for those aged 14 years and under. Learn how to make some healthy creative snacks and meals that your friends and family will be impressed with.

Library

- New modern book collections
- Justice of the Peace
- Free digital access to books and your favourite magazines
- Free Wi-Fi, computers, photocopying and printing access
- Technology Suite
- Podcasting and recording studio
- Interactive children's play areas
- Quiet study areas
- Room hire available
- Immunisation services

Open six days a week

380 Waterloo Corner Road, Burton

For more information on programs, services & events visit:

www.salisbury.sa.gov.au/bch

Stay in touch  /salisburylibraryservice

WORDS Taylor Harvey

CRAFTED WITH LOVE

Handmade items at the Pooraka Men's Shed are crafted with great love and affection and now they are gaining attention.

In early 2022, world-renowned Australian footwear and clothing company R.M. Williams approached the Pooraka Farm Community Centre Men's Shed to see whether members might be interested in making boot jacks for the company.

Boot jacks are a handy tool used to make taking off boots easier. The item is particularly beneficial for those who have limited mobility and find it difficult to take their boots off by hand.

The iconic Australian company has a strong desire to manufacture products in Australia where possible, which resulted in R.M. Williams forming a partnership with the Australian Men's Shed Association.

Men's Sheds are safe and inclusive meeting spaces for people from all walks of life to connect, craft and find companionship. These spaces are full of talented artisans, making it the perfect partnership for R.M. Williams.

With its workshop located in Salisbury South, R.M. Williams didn't have to look too far to find a group to take on the rewarding task.

The exciting partnership started with a simple conversation, and it wasn't long until the crafty crew got on the tools.

Anywhere between 40 to 50 boot jacks are



Goodwin 'Goddy' Gaucci works on making a boot jack at the Pooraka Men's Shed.

produced each week with each having the Pooraka-based Men's Shed logo stamped on the bottom.

While R.M. Williams is benefitting from the brilliant craftsmanship of the talented members, many of the 'shedders' are just as excited to be involved with the rewarding partnership.

"The undertaking of this project has been a great team building opportunity for the 'shedders', pulling together all their various expertise in order to create something to be proud of," one shed member said.

"We thank R.M. Williams for the opportunity to partner with them for this project."

As part of R.M. Williams' Father's Day competition in August last year, a \$5 donation



was given to the Australian Men's Shed Association for each entry.

All donations will support the ongoing maintenance and management of Men's Sheds, as well as funding special activities and initiatives to engage the thousands of 'shedders'.

Handcrafted brilliance is appreciated by many across the world, and the boot jacks made by the Pooraka Farm Community Centre Men's Shed will benefit people well into the future.

WORDS Taylor Harvey

PROGRAM PEDALS ITS WAY TO **RECORD YEAR**

Whether they were riding a bike for the first or the thousandth time, riders came from all parts of Salisbury to celebrate Cycle Salisbury's ninth anniversary in September.

For close to a decade, the much-loved Cycle Salisbury Social Rides program has delivered a number of great health and social outcomes, while allowing riders to explore Salisbury.

The well-attended birthday event saw riders start from the shelter shed at Carisbrooke Park and participate in rides that varied from five kilometres to 25 kilometres.

The Social Rides program has gone from strength-to-strength since it first began in late-2013, with a record number of participants jumping on their bike last year.

Year one of the program back in 2013 saw 564 riders jump on their bikes with that number increasing to 1271 riders between September 2021 and August 2022.

This year's high participation number smashed the previous record of 1120 individual rides by 151 riders, continuing the strong momentum the program has gathered.

While the participation numbers highlight that the program is growing, it is important to note the social benefits that the rides create.

City of Salisbury's Wellbeing Programs Coordinator Jim Binder said seeing people come together and grow meaningful friendships has shown "it's not just about the numbers".



Cycle Salisbury Social Rides participants geared up to celebrate the program's ninth anniversary last year.

"The camaraderie, friendships and other formal and informal riding groups that have been formed has been truly wonderful to see and the highlight of the program," Jim said.

In 2012, as part of Bicycle SA's contract with the City of Salisbury, an extensive community consultation found that the community "lacked cycling confidence".

The community's cycling confidence has massively grown over the past decade, with many participants now claiming to be fitter and happier thanks to the program.

"Cycle Salisbury Social Rides are a great way to break down social isolation, to get out and about, and meet local people while keeping fit at the same time," one participant said.

"You have no idea how much being a part of the social rides has meant to me – it has changed my life and wellbeing in so many ways," another participant added.

Salisbury is home to more than 100 kilometres of off-road paths and trails, and for the last nine years, Cycle Salisbury riders have been enjoying the City's natural landmarks.

The majority of the rides happen on the Little Para River Trail, Dry Creek Trail and Cobbler Creek. These trails showcase the natural beauty found throughout the City of Salisbury and are open all year round.

With many natural landmarks to explore and a fantastic riding community, the program is expected to grow and produce strong health and social outcomes well into the future.

For more information about Cycle Salisbury, please visit:
www.salisbury.sa.gov.au/cyclesalisbury

WORDS Lisa Bachmayer

KEEPING CONNECTED

After the loss of her husband in 2018, Pooraka resident Shirley Beinke, 80, first stepped into a City of Salisbury senior centre to connect with like-minded locals and keep busy.

Now she's part of a campaign urging other seniors to get connected and take advantage of opportunities to keep active, get social and enjoy delicious meals - all for free or low cost - as part of the council's services for residents aged 50 years and older.

Mrs Beinke, who is now a volunteer at Para Hills Seniors Centre and runs the Friendship Group, said she originally joined to "get out and do things" for herself but then realised she could find happiness by helping others.

"When I originally lost my husband, I missed him terribly and got quite run down...then I thought I can't keep relying on my family and friends; I've got to do something for myself," she said.

Mrs Beinke said she was surprised by the variety of activities and meals the council offers senior citizens.

"There's so much out there so if there are people sitting at home lonely, we need to find them," she said. "It gives them a purpose to come out and chat to people."

Mrs Beinke shares her story in the council's new 'Connecting Seniors' video, which showcases the services available at the Jack Young Centre, Para Hills Seniors Centre and Pine Lakes Centre.



Pooraka resident Shirley Beinke found senior centres to be a positive social outlet after the loss of her husband.

The centres run physical activities, such as dance, bike rides and tai chi; creative and social activities such as ukulele, wood burning and multi-cultural groups; and a program of special events, including live music over lunch - all for free or from \$3, with the first session free.

The Jack Young and Para Hills centres also offer coffee and meals, including a roast or schnitzel from \$8, less for salads and sandwiches, and take-home meals.

A program of special events will also be held this year as part of the 'Find Your Why' campaign, which helps seniors find a reason to stay active - such as being able to play with grandchildren or do their own gardening - and how to achieve it.

Council's Social Participation and Diversity Team Leader, Jenna Romaine, said the challenge was to encourage as many of the area's over 50s - which make up about 35 per cent of Salisbury's population - to give it a try.

"Sometimes the hardest thing is to walk in the door, but once they meet the staff, volunteers and other people, they realise it is friendly and welcoming; we're not just saying that," she said.

"We want to help people get more active, reduce social isolation and make them feel more connected to their community."

To learn more about the services offered to people 50 years and over, visit:

www.salisbury.sa.gov.au/seniors

or call the Jack Young Centre on 8406 8525



aras
aged rights advocacy service inc.

Supporting the rights of older people

Advocacy • Information • Education • Support

Locations:

- 175 Fullarton Road, Dulwich • 2/1 First Street, Nuriootpa. By appointment only
- 9/46-52 Ocean Street, Victor Harbor (access from Coral St). By appointment only
- 21 Denny Street, Berri. By appointment only

Tel (08) 8232 5377 or toll-free 1800 700 600

aras@agedrights.asn.au www.sa.agedrights.asn.au

ARAS is funded by the Department of Health, National Aged Care Advocacy Program and Office for Ageing Well, SA Health.



Rhiannon Pearce MP
Member for King

Your local voice for King

8288 8210
king@parliament.sa.gov.au
@RhiannonPearceKing

SAVE UP TO 30%

WITH CARTRIDGE WORLD BRAND



Talk to a local expert 8285 6033


74 Park Terrace, Salisbury
(next to Hungry Jacks)

cartridgeworld.com.au



Cartridge World®
Trusted Printing Solutions

At Northcare you're in good hands



Our highly skilled practitioners will help you get the most out of life through:

- Physiotherapy
- Massage therapy
- Exercise physiology

Book an appointment online or call:
Salisbury 8250 7557
192 Park Tce, Salisbury Plain
northcare.com.au

northcare physio | celebrating 30 years

EXPLORE YOUR WORK POTENTIAL WITH NDIS EMPLOYMENT SUPPORTS

For people with developmental disabilities who want to create their own future, Barkuma provides long term support, connection and belonging.

- Transition from School Program (Year 12)
- School Leaver Employment Supports (SLES)
- Supported Employment through our Commercial Services
- Disability Employment Service (DES)



Barkuma

In the North for over 50 years

08 8414 7100 barkuma@barkuma.com.au Barkuma.com.au

A Dignified Resting Place of Honour for that Special Person

The Chapel of the Holy Family Mausoleum Salisbury has introduced a prestigious alternative to preserving the ashes of your loved one.



Cremation Niches

- ♦ Double or single niches available
- ♦ Urns are securely displayed behind elegant beveled plated glass inside one of Australia's most prominent Mausoleums
- ♦ The Cremations Niches have a 50 year lease in our securely and fully maintained Mausoleum



Non Denominational Chapel

The Chapel in the Mausoleum is available for hire. Families are able to arrange the use of the Chapel for:

- ♦ Funeral Services
- ♦ Anniversaries
- ♦ Memorials



- ♦ Audio Visual Facilities
- ♦ Catering Services
- ♦ Wheelchair Access
- ♦ Restrooms
- ♦ Car Parking

Open 7 days
a week from
9:00am to 5:00pm



Chapel of the
Holy Family
- Mausoleum -
SALISBURY

Address: 4-6 Spains Road,
Salisbury Downs SA 5108

Phone: (08) 8182 5000

Email: info@familychapel.com.au

Website: www.familychapel.com.au



Discover Salisbury Newsletter



Subscribe

to our online newsletter for the latest events
happening around the Salisbury area.

discoversalisbury.com.au/newsletter



Prepare • Maintain • Be Aware

Are you
Fire Season
ready?



To find out how you can
prepare for fire season
www.cfs.sa.gov.au

WORDS Michelle English

THINKING GREEN



Human activities have a significant impact on the natural systems that underpin our health and wellbeing as well as our economic prosperity.

Successful cities think about the long term while making decisions today. They care about the environment, their people and the legacy they leave for future generations.

The importance of protecting natural assets and acting sustainably is increasingly being recognised by governments, businesses, investors and communities as a priority as the impacts of climate change, natural disasters, declining water supplies and biodiversity loss are felt both globally and locally.

Salisbury is meeting the challenges of sustainability in our own backyard, demonstrated by our leadership in the fields of water conservation and management, waste recovery and the provision of open spaces.

A Sustainable City is one of four directions of the City Plan 2035 which “includes protecting and conserving our diverse natural environment to support biodiversity, reducing Council’s environmental footprint, ensuring we make the most of our resources and enabling our community, environment and infrastructure to be resilient to a changing climate.”

A key action of the City Plan 2035 is to “Review Council’s sustainability strategy to include waste and energy management, cooler suburbs, biodiversity and water.”



Community members helped Council to plant 10,000 trees and shrubs as part of our sustainability-focused activities last year.

The City of Salisbury’s existing Sustainability Strategy, *Salisbury, Sustaining Our Environment* was adopted by Council in 2007 and needs to be updated to reflect changing legislation, policy and community values.

A review of the Strategy commenced in 2020 and a new draft Sustainability Strategy was endorsed by Council in August 2021 for the purpose of community consultation.

The draft Sustainability Strategy vision is: “A shared commitment, for Council and the community to enhance and protect the natural environment, responsibly manage resources, reduce carbon emissions and be resilient in a changing climate.”

The draft Sustainability Strategy contains 22 current and 18 new actions grouped under

the following themes:

- Enhancing Biodiversity
- Reducing greenhouse gas emissions
- Building resilience to climate change
- Waste minimisation and resource recovery; and
- Water stewardship.

Consultation on the draft Strategy is planned to commence in early 2023 and will involve a combination of online engagement and community pop-up events that will seek feedback on the draft vision, objectives, actions and indicators.

Updates in relation to the community consultation process will be shared on Council’s website.

WORDS Claudine Spinner

ON THE MARKET

Building on the success of The Mawson Centre's annual Christmas Market, the City of Salisbury recently launched the Salisbury Community Markets, an exciting new initiative for the whole community to enjoy.



Over the next three years, community markets will be held every three months and rotate through our Burton, Salisbury and Para Hills Community Hubs and The Mawson Centre. Each of the markets will have their own local theme and stallholders from far and wide will provide a range of amazing products and tasty food offerings.

At the Burton and Para Hills Community Hubs we will also see a range of produce from our gardens and learn from interesting speakers on popular garden topics.

Community markets are a great way for our local community to get together and support local budding entrepreneurs and small

business owners who often make their start at local markets.

Free and low-cost activities also make it a fun day out for the whole family.

The first community market was held in September last year at Para Hills, attracting about 900 attendees despite bad weather.

This was closely followed by the annual Christmas Market at The Mawson Centre in November.

The next market will be held in March at the Burton Community Hub followed by a Youth Market at the Salisbury Community Hub



Further details of this project can be found at:
www.salisbury.sa.gov.au/communitymarkets

WORDS Lisa Bachmayer

MAKING THE CITY MORE INCLUSIVE FOR ALL

A progressive relationship between the City of Salisbury and a group of residents with disabilities is making community spaces and places accessible to all, allowing everyone to enjoy what the area has to offer.

The Disability Access Inclusion Network (DAIN) is made up of Salisbury residents living with disabilities, their carers and disability organisation staff.

It gives advice to staff and contractors on council projects about how places such as streets, playgrounds, community centres, libraries and sporting centres can become user-friendly to those with disabilities or facing other challenges.

This means the council is embracing the principles of universal design - where spaces are designed to be usable by everyone, no matter the challenges they face - making Salisbury a welcoming city for all.

DAIN formed in 2015 out of similar groups operating 20 years before that. Its members represent a range of disabilities and challenges, including mobility and hearing impairments, chronic fatigue and neurological challenges, such as Autism Spectrum Disorder (ASD).

Its recent contributions include an adult change room at the Salisbury Community Hub, improved accessibility recommendations at the Burton Community Hub, changes to angled pathway approaches - once dangerous for wheelchair users along John Street, and giving advice in the Salisbury Aquatic Centre redevelopment.

DAIN member and life-long Salisbury



Disability Access and Inclusion Network (DAIN) member and life-long Salisbury resident Tracy Stapleton has offered her lived experience of disability to help shape local projects.

resident Tracy Stapleton, who has a mobility impairment and uses a mobility scooter, said she joined the group as a way of using her "lived experience of disability" to contribute to the community and learn about new projects.

"I feel really grateful that my problems have been recognised and addressed," she said. "It means my access has been improved so my life has been improved and I have access, the same way that everyone in the community does.

"I feel seen as a worthwhile member of the community and it means that other people will benefit."

Fellow DAIN member Sue Osborne, whose family - including herself has ASD, said she joined the group to represent "people with less obvious disabilities".

"If I can make living in our community easier for just one person that's a win," she said.

"We have had meetings with all sorts of people who actually listen and make changes to new builds because of our input."

City of Salisbury Inclusion Project Officer Michael Taggart said the group's involvement in the early stages of new projects was important so that the "council's investment is used by the maximum number of people".

"That old phrase 'Do nothing about us without us' is the quickest way to learn," he said.

Mr Taggart encouraged anyone representing a disability or other challenge to consider joining the group.

For more information visit:
www.salisbury.sa.gov.au/DAIN
or phone 8406 8390

WORDS Jennifer Sothman

Burton Community Hub grand opening, Burton

Over 4000 excited residents attended the grand opening of the Burton Community Hub, with many praising the fantastic new facility. The Hub includes a tech lab and podcasting studio, library, workshop and communal garden.



Sounds in the Garden, Salisbury

Our fortnightly Sounds in the Garden events at the Jack Young Centre are always popular with our members and visitors. We love hosting regular events with local musicians and seeing our members getting up dancing.



Feelgood Women's Lunch, Para Hills

Australian TV and radio personality Anne Wills OAM at a special lunch to mark Women's Health Week during September.



Morella Cultural Kitchen opening, Parafield Gardens

Over the years, the City of Salisbury has welcomed residents from all over the world and the introduction of the Morella Cultural Kitchen to the Morella Community Centre is a place where intercultural residents can share and prepare their traditional cooking in a new purpose-built facility.



Springs Markets @ Para Hills Community Hub, Para Hills

The Para Hills Community Hub saw huge crowds at its inaugural Spring Market and garden workshops.



Duke of Edinburgh Community Clean Up, Salisbury

As part of Twelve25 Youth Centre’s Duke of Edinburgh’s International Award, participants took part in a community clean-up along the walking path behind the Salisbury Interchange. Over the four hours they collected 12 bags of rubbish and five bucket loads of glass making the area looking great.



Want Local Customers?

Then advertise locally in
Salisbury Aware.

For rates & publishing dates contact Walsh Media
Telephone 8221 5600 or
email admin@walshmedia.com.au



Join in the fun!
8285 3666
www.pgss.com.au
enquiries@pgss.com.au

PARAFIELD GARDENS SWIM SCHOOL

THE FUN STARTS HERE!

Open Day

Join us for our Open Day to experience the OLSH College spirit
and discover how your daughter will find her place with us

SUNDAY 19 MARCH 2023 | 1 - 3PM

AT OUR LADY OF THE SACRED HEART COLLEGE
496 Regency Road, Enfield SA 5085

[f @OLSHCollegeEnfield](https://www.facebook.com/OLSHCollegeEnfield) [@olshcollegeadelaide](https://www.instagram.com/olshcollegeadelaide)



OLSH
OUR LADY OF THE
SACRED HEART
COLLEGE



BOOK NOW

flavours.

Award winning icecream

- Huge range of dairy, vegan, sorbets
- Durian, Taro Coconut, Pandan
- Custom gelato cakes to order
- Take home tubs

Paralowie Village
Your one stop shop!

Zambrero

coles

LIQUORLAND

SUBWAY

AUSTRALIA POST

PARALOWIE VILLAGE DISCOUNT PHARMACY



**Hair & Beauty
Barber
Nail Salon**



**Entice coffee
Bakery
Chicken & Chips**



**Phone Repairs
Asian Grocery
ATM**

Bolivar Rd, Paralowie | Open 7 Days | paralowievillage.com.au

Paralowie VILLAGE
SHOPPING CENTRE

f @paralowievillage

Two ultra-fast
350kW electric
vehicle chargers

Upgraded Coles
New product lines
+ Click&Collect



Join our monthly
e-letter for prizes + more!

COMMERCIAL / RESIDENTIAL / SALES / LEASING / PROPERTY MANAGEMENT



28 COMMERCIAL ROAD, SALISBURY SA 5108 | 8234 1212 | www.linandrews.com.au | RLA 134

LIN ANDREWS

50 YEARS

WORDS Jennifer Sothman

CITY WORKS

Ongoing maintenance

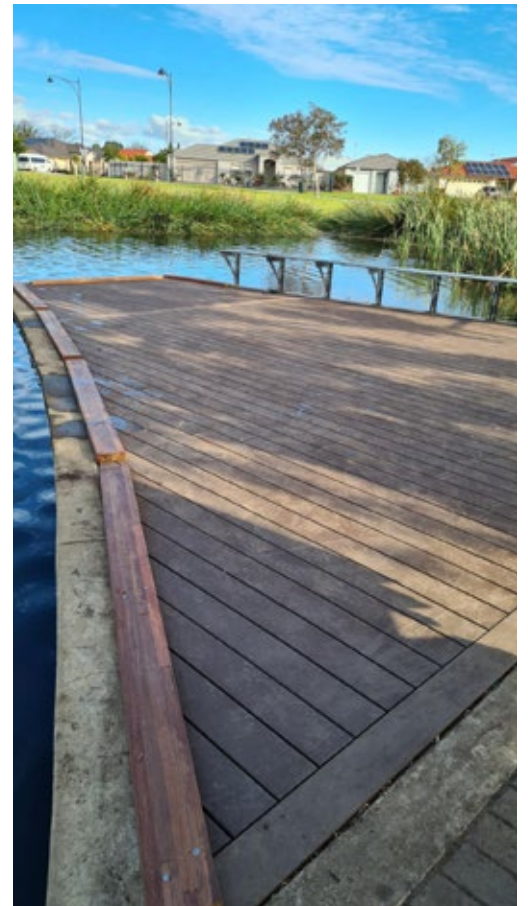
Maintenance will occur around the City as part of an ongoing program. This includes such programs as kerb and gutter reinstatement due to tree damage and footpath reinstatement. For more information please contact Council's Customer Centre on 8406 8222.



New bridges, Burton & Paralowie

The existing bridge, located in Springbank Boulevard Reserve, in Burton needed to be completely replaced. The base of the new bridge was built using a sustainable, recycled plastic composite, while the decking was built with recycled plastic composite timber. Both of which will extend the lifespan of the bridge improving safety.

The decking on five bridges along the Little Para River, in Paralowie was recently replaced. The works included removing the existing decking and kick boards that were damaged and decaying and replacing them with new Merbau timber slats. While the existing decking was removed, the substructure of the bridges was inspected and any damaged components were replaced as required to ensure the structural integrity of the bridges.



Morella Cultural Kitchen, Parafield Gardens



The Morella Cultural Kitchen is a fantastic addition to the Morella Community Centre. It includes a charcoal BBQ, wood oven and tandoori oven. The outdoor area was also upgraded with seating and a large paved area for outdoor functions and events.

Playground upgrade, Salisbury East



We've just completed another playground upgrade. This time we've improved one of the playgrounds at Cobbler Creek Recreation Park. New play equipment included a challenge course, a seated glider and some accessible swings. We also added seating and a table, fresh soft fall, drainage and concrete paving from McEvoy Drive to the playground.

New small dog park, Para Hills West



A dog park for small dogs has been constructed adjacent to the existing dog park at The Paddocks. It comes complete with room to play fetch as well as a table with shade and a drinking fountain.



**“I’m really warming to Ramona,
even though it’s a bit strange to
have someone help me...”**

Jolanta

*We
hear
you*

With 70 years of experience, we’ve learned a lot about getting older, and how a little help makes a big difference. Our short film series explores one family’s highs and lows, sharing those inner thoughts and fears that too often go unspoken.

Watch the story of Jolanta and her family at www.helpinghand.org.au/wehearyou or call 1300 653 600

Home care | Retirement living | Residential care

70
Years
Together


Helping Hand
new aged care