



Oakville Crimson Spire
Prunus cerasifera 'Oakville Crimson Spire'

A deciduous tree, up to 6m in height, with a slender canopy. It has deep reddish-bronze foliage and pink to white flowers that appear in spring. This tree is tolerant of a range of climatic conditions. It is recommended for small verges and is approved by SA Water and ETSA.



Pine Court, Mawson Lakes

Following community consultation for your street earlier last year; we would like to advise that the selected tree species for your street is

Prunus cerasifera 'Oakville Crimson Spire'

Please find enclosed information related to the tree species, plans for the tree removals/retentions and new tree plantings.

Tree removal works are being coordinated to occur over summer 2023.

Planting of new trees is being coordinated to occur beginning Autumn 2023.

You can access information regarding the Street Tree Program and benefits of trees by scanning here:



or visit:

 salisbury.sa.gov.au/treeprogram

If you have any further questions please contact the Project Manager, Michael Oborn.

 34 Church Street, Salisbury

 8406 8222

 city@salisbury.sa.gov.au



Street Tree Program Consultation Results Outcome



Trees are an important part of the landscape and urban environment across the City of Salisbury.

They provide a range of environmental and ecological benefits for the City and the wider community.

Timeframe

Tree removal works are being coordinated to occur over summer 2023 with planting to follow beginning Autumn 2023.

We will provide further information closer to works date.

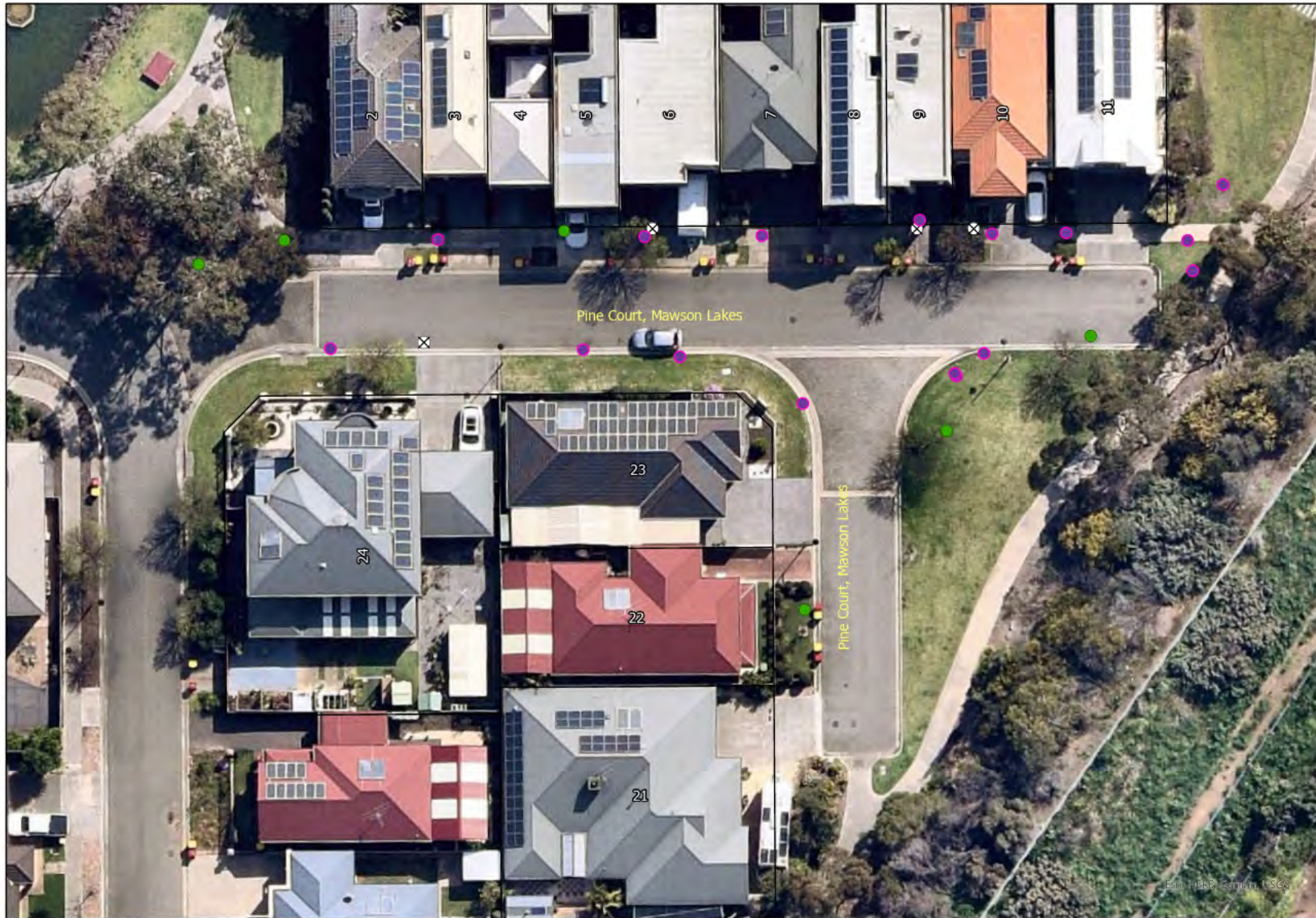
 www.salisbury.sa.gov.au/treeprogram

 8406 8222

 city@salisbury.sa.gov.au

   @cityofsalisbury

Street Tree Program Consultation Results Planting Plan



- Retain
- ✕ Remove
- New Tree - Species
 - Prunus cerasifera Oakville
 - Crimson Spire

NOTES:
Property boundaries are indicative only.
Symbol locations are indicative only.
Regulated or Significant trees marked for removal have not received Developmental Approval to date
New trees will generally be located centrally between footpath and kerb or between property boundary and kerb unless otherwise indicated on plan.

Pine Court, Mawson Lakes