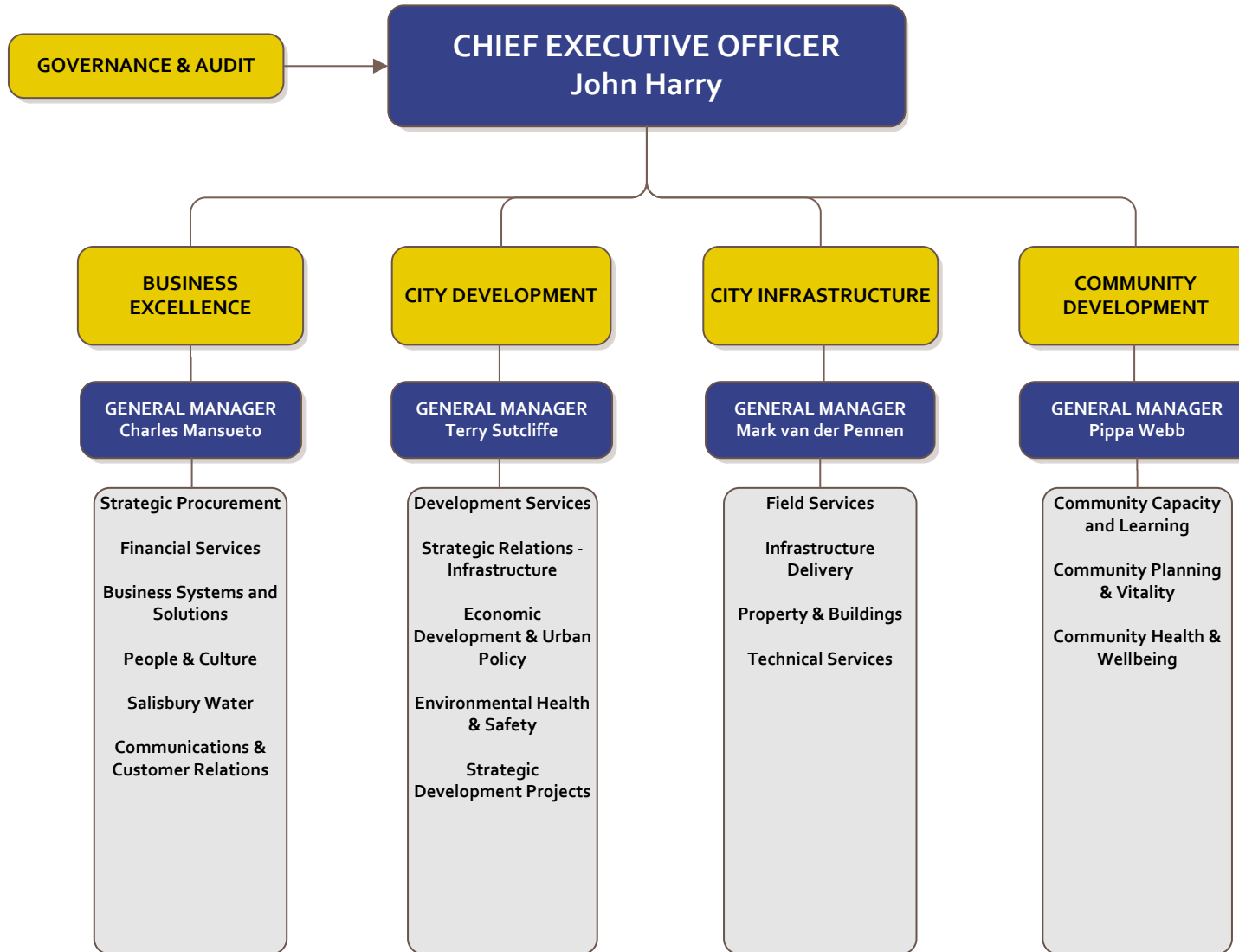
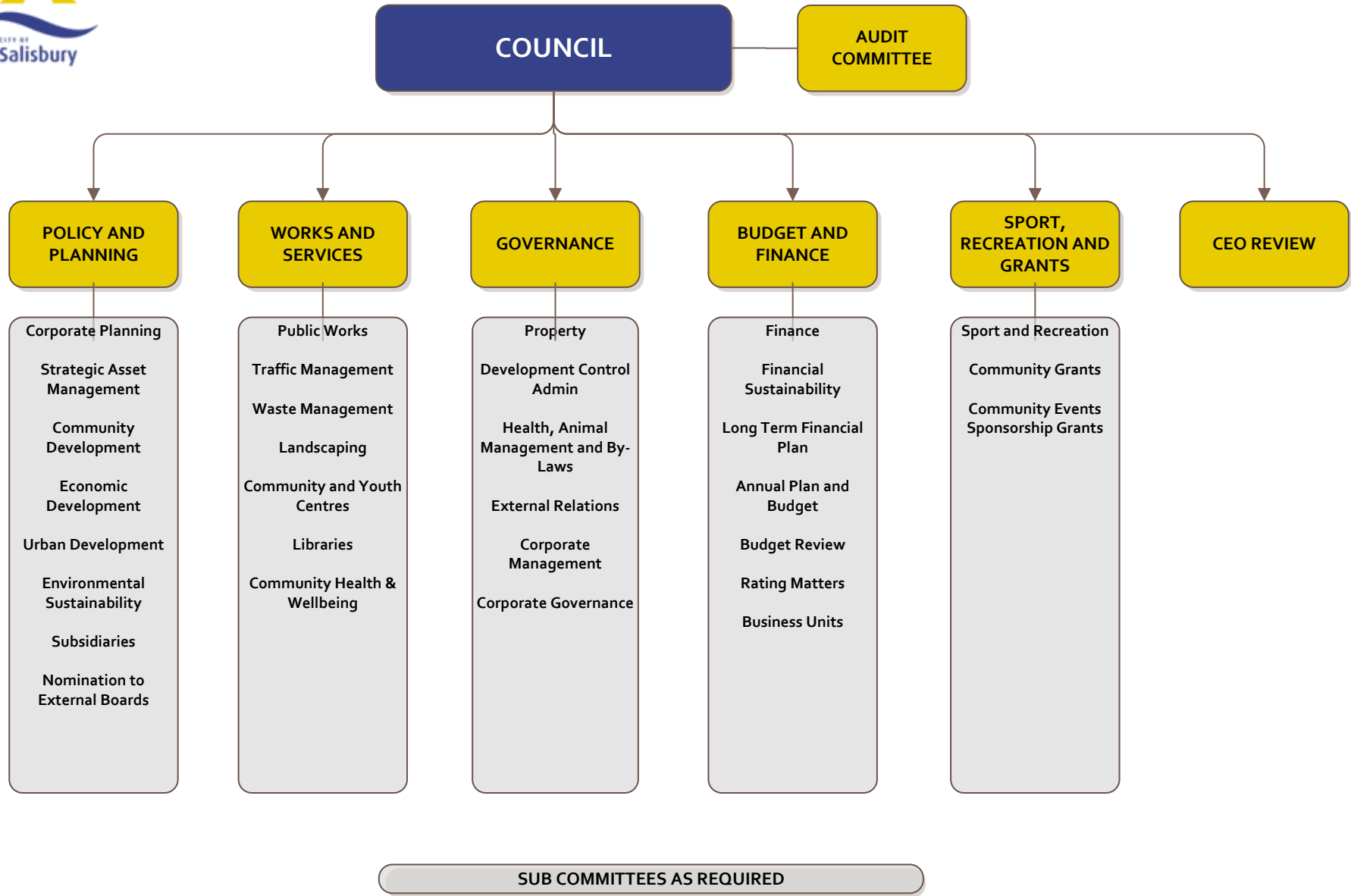
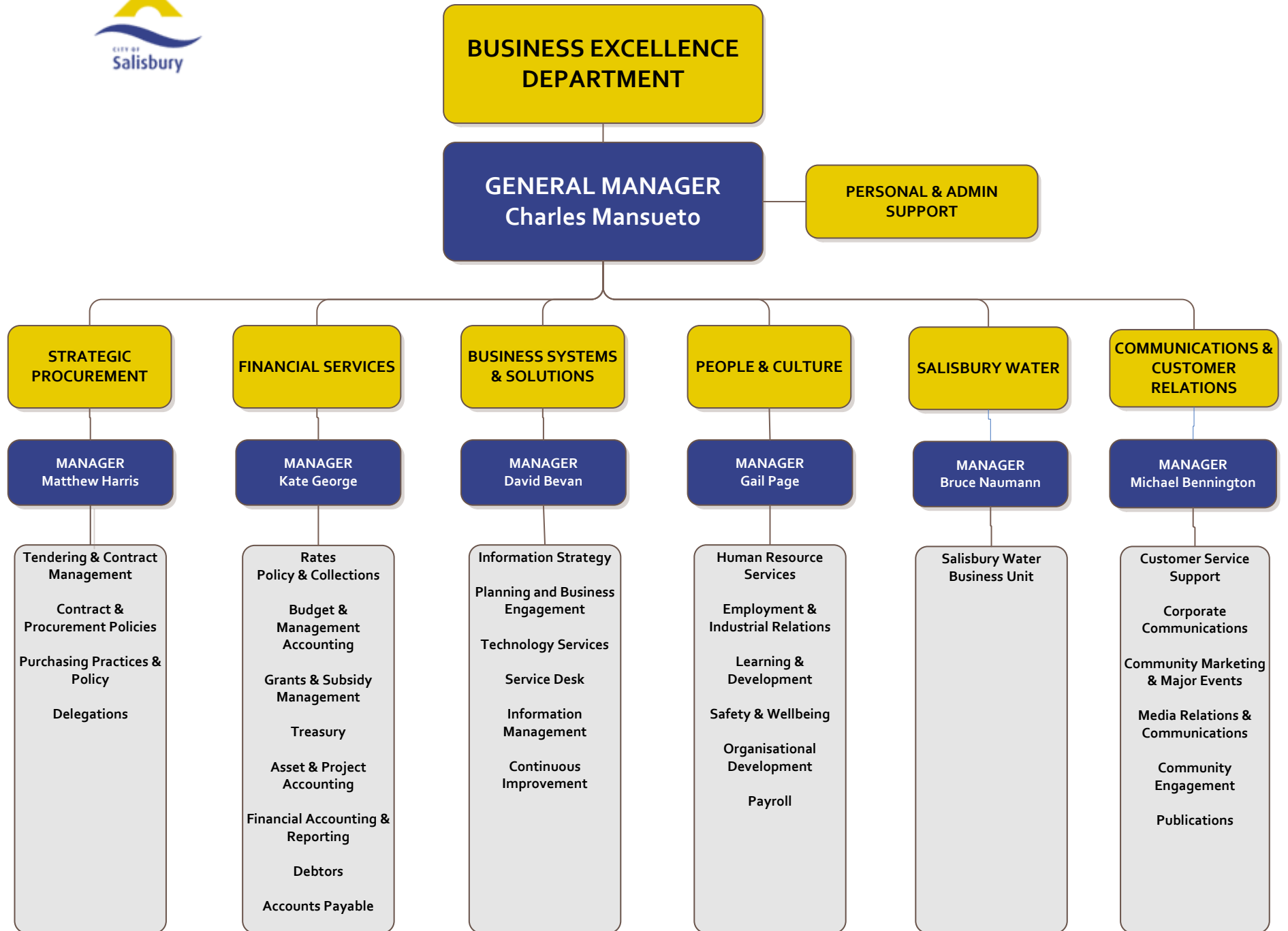




# ORGANISATION STRUCTURE









# CITY DEVELOPMENT DEPARTMENT

**GENERAL MANAGER**  
Terry Sutcliffe

PERSONAL & ADMIN  
SUPPORT

## ECONOMIC DEVELOPMENT & URBAN POLICY

**MANAGER**  
Greg Ratsch

Economic Development  
Business Advice and Events  
Investment Attraction  
City Plan  
Social Infrastructure Planning  
Development Plan Amendments  
Economic and Urban Policy  
Green Industries  
Business Engagement  
Climate Change Adaptation  
Civic Relationship with Linyi

## STRATEGIC DEVELOPMENT PROJECTS

**MANAGER**  
Chantal Milton

Property Development Projects  
Development Projects feasibility

## DEVELOPMENT SERVICES

**MANAGER**  
Chris Zafiroopoulos

Development Plan Assessment  
Building Rules Assessment  
Corporate Signs  
Heritage Assessment  
Devt Inspections & Compliance  
Assessment of Land Division Proposals  
Devt Engineering Coordination  
Admin & Support Services  
Private Certification Services

## ENVIRONMENTAL HEALTH & SAFETY

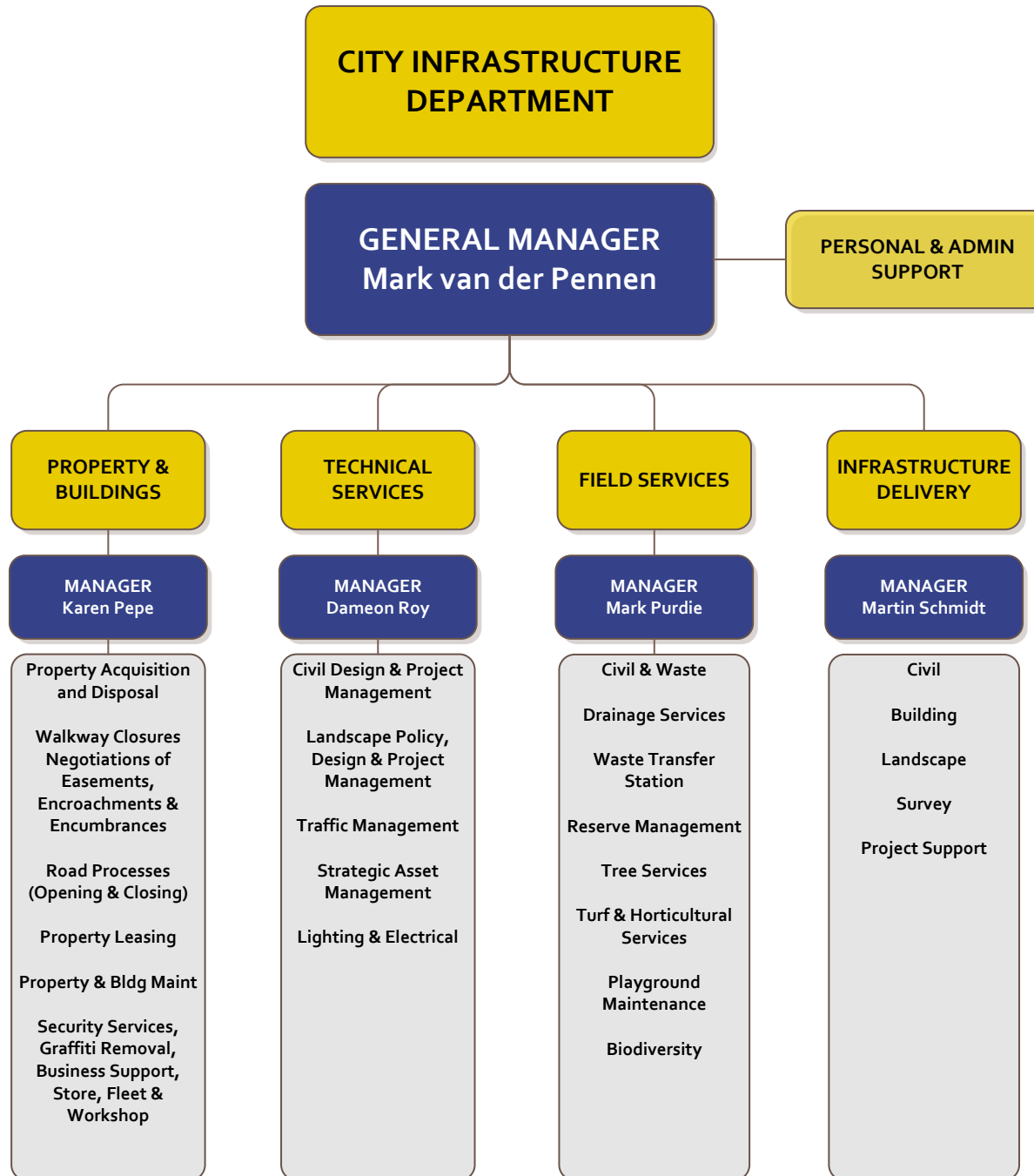
**MANAGER**  
John Darzanos

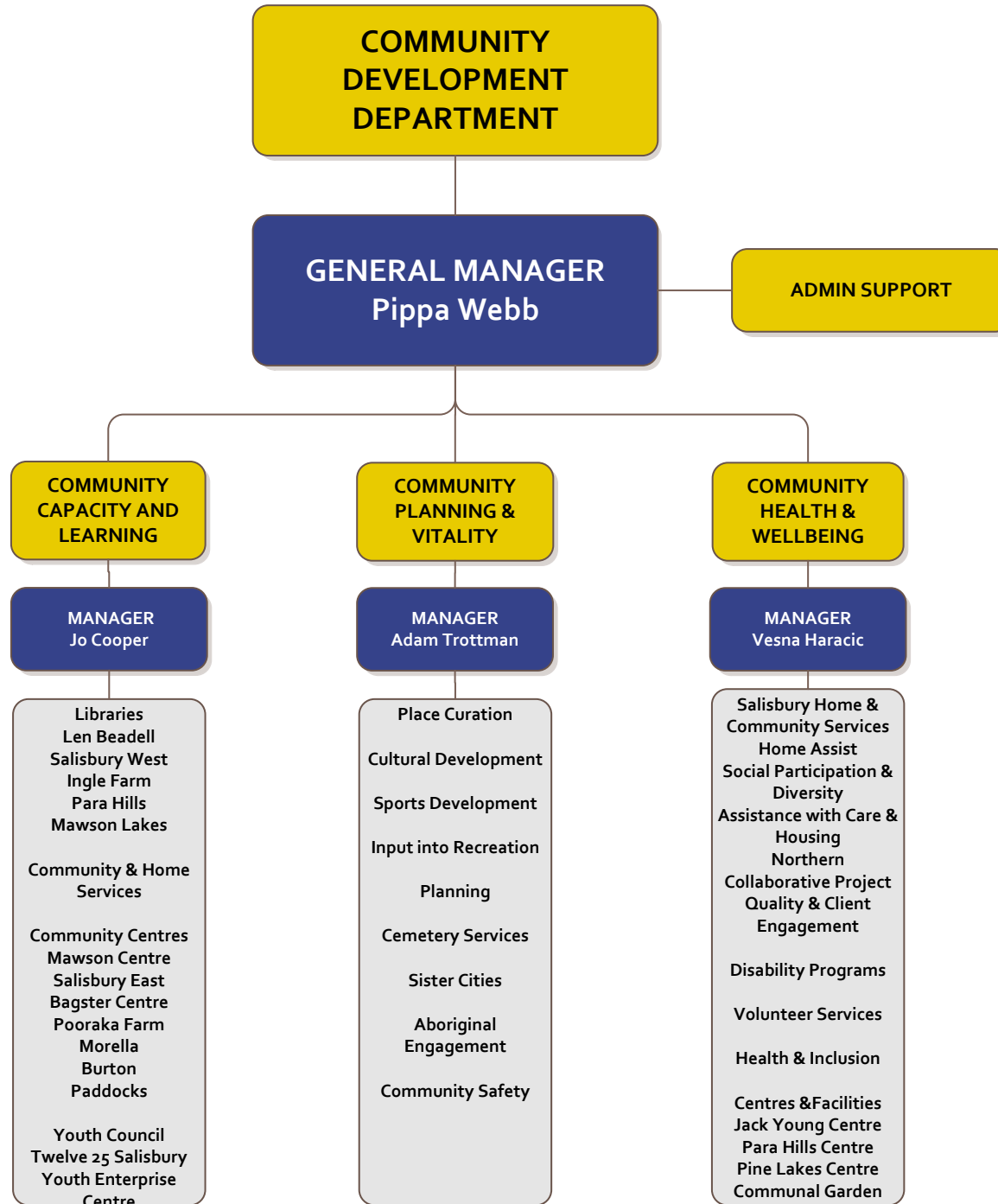
Public & Environmental Health  
Food Safety  
Inspectorate  
Dog & Cat Management  
Local Government By-Law Enforcement  
Parking Control

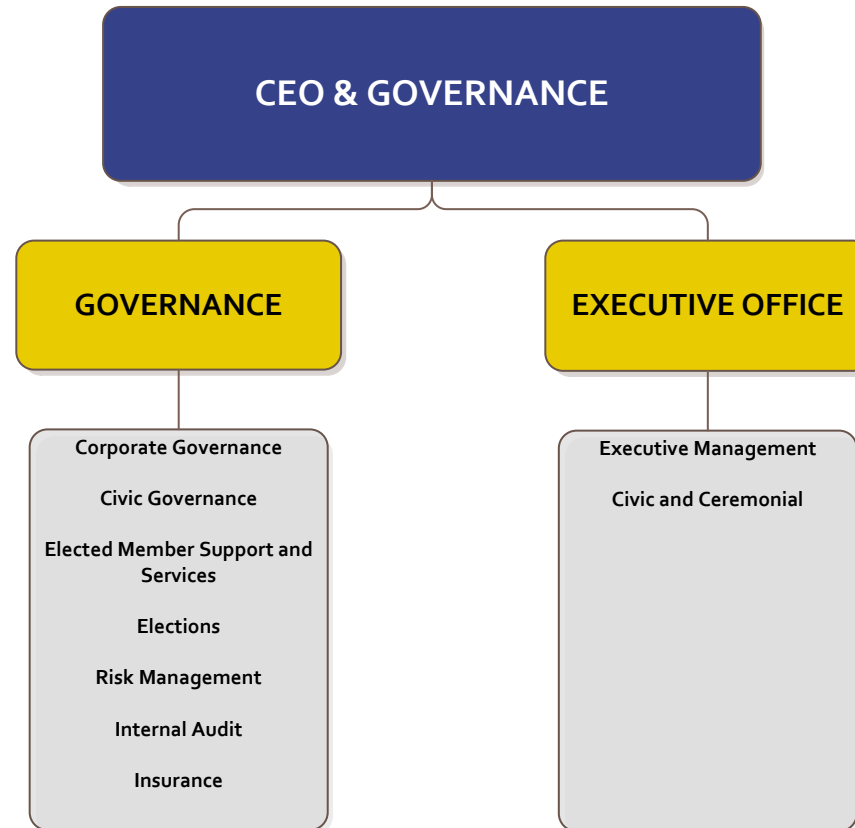
## STRATEGIC RELATIONS - INFRASTRUCTURE

**MANAGER**  
Harry Pitrans

Major strategic infrastructure and urban development project coordination  
Infrastructure & Transport Projects










**CHIEF EXECUTIVE OFFICER**  
**John Harry**

**GOVERNANCE**  
Manager: Mick Petrovski



**BUSINESS EXCELLENCE**  
General Manager  
Charles Mansueto

**STRATEGIC PROCUREMENT**  
Manager: Matthew Harris




**FINANCIAL SERVICES**  
Manager: Kate George



**BUSINESS SYSTEMS AND SOLUTIONS**  
Manager: David Bevan




**PEOPLE & CULTURE**  
Manager: Gail Page



**SALISBURY WATER**  
Manager: Bruce Naumann



**COMMUNICATIONS & CUSTOMER RELATIONS**  
Manager: Michael Bennington



**CITY DEVELOPMENT**  
General Manager  
Terry Sutcliffe



**ECONOMIC DEVELOPMENT & URBAN POLICY**  
Manager: Greg Ratsch



**STRATEGIC DEVELOPMENT PROJECTS**  
Manager: Chantal Milton



**DEVELOPMENT SERVICES**  
Manager: Chris Zafirooulos



**ENVIRONMENTAL HEALTH & SAFETY**  
Manager: John Darzanos

**STRATEGIC RELATIONS - INFRASTRUCTURE**  
Manager: Harry Pitrans



**CITY INFRASTRUCTURE**  
General Manager  
Mark van der Pennen



**PROPERTY & BUILDINGS**  
Manager: Karen Pepe




**TECHNICAL SERVICES**  
Manager: Dameon Roy



**FIELD SERVICES**  
Manager: Mark Purdie



**INFRASTRUCTURE DELIVERY**  
Manager: Martin Schmidt



**COMMUNITY DEVELOPMENT**  
General Manager  
Pippa Webb

**COMMUNITY PLANNING & VITALITY**  
Manager: Adam Trotzman



**COMMUNITY HEALTH & WELLBEING**  
Manager: Vesna Haracic

**COMMUNITY CAPACITY & LEARNING**  
Manager: Jo Cooper